

Socket - EM-DUO 120/15/SPD/AUX - 5604063

Please be informed that the data shown in this PDF Document is generated from our Online Catalog. Please find the complete data in the user's documentation. Our General Terms of Use for Downloads are valid (<http://phoenixcontact.com/download>)




Rail-mounted dual power outlet with two 120 V AC/15 A receptacles equipped with transient voltage surge suppression (TVSS) for 35 mm DIN rail per EN 60715. The outlet protects laptops, instrumentation, and other sensitive 120 V AC-powered equipment from damage caused by transients on the branch circuit. Terminal block allows connection and surge protection of auxiliary devices.
Housing color: ivory. National version: USA. Connection type: screw.

Product Description

Rail-mountable utility outlet with integrated surge protection for 120 V AC power.



Key Commercial Data

Packing unit	1 STK
GTIN	 4 046356 410496
GTIN	4046356410496
Weight per Piece (excluding packing)	300.000 g
Custom tariff number	85363030
Country of origin	United States

Technical data

Dimensions

Width	82 mm
Height	143 mm
Depth	49 mm

Ambient conditions

Ambient temperature (operation)	-35 °C ... 60 °C
---------------------------------	------------------

General

Nominal voltage U_N	125 V AC
Nominal current I_N	15 A

Socket - EM-DUO 120/15/SPD/AUX - 5604063

Technical data

General

For country-specific use in	USA
	Canada
	Mexico
	Bahamas
	Bermuda
	Columbia
	Costa Rica
	Ecuador
	El Salvador
	Panama
	Puerto Rico
	Taiwan
	Venezuela
	Virgin Islands
Color	ivory
Insulating material	Polycarbonate & ABS blend
Standards/regulations	UL 508
	CSA 22.2
	UL 1449 ed. 2

Connection data

Conductor cross section solid max.	6 mm ²
Conductor cross section flexible max.	4 mm ²
Conductor cross section AWG max.	10
Connection method	Screw connection
Stripping length	8 mm
Screw thread	M3

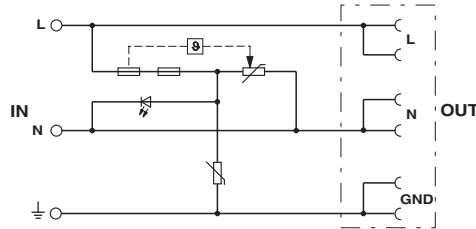
Standards and Regulations

Standards/regulations	UL 508
	CSA 22.2
	UL 1449 ed. 2

Drawings

Socket - EM-DUO 120/15/SPD/AUX - 5604063

Circuit diagram



Classifications

eCl@ss

eCl@ss 4.0	27142305
eCl@ss 4.1	27142305
eCl@ss 5.0	27143412
eCl@ss 5.1	27130801
eCl@ss 6.0	27130803
eCl@ss 7.0	27130803
eCl@ss 8.0	27142305
eCl@ss 9.0	27142305

ETIM

ETIM 3.0	EC001325
ETIM 4.0	EC001663
ETIM 5.0	EC001663
ETIM 6.0	EC001663

UNSPSC

UNSPSC 6.01	30212010
UNSPSC 7.0901	39121610
UNSPSC 11	39121610
UNSPSC 12.01	39121610
UNSPSC 13.2	39121406

Approvals

Approvals

Approvals


UL Listed / cUL Listed / cULus Listed


Socket - EM-DUO 120/15/SPD/AUX - 5604063


Approvals

Ex Approvals

Approval details

UL Listed		http://database.ul.com/cgi-bin/XYV/template/LISEXT/1FRAME/index.htm	FILE E 238705
mm ² /AWG/kcmil		30-10	
Nominal current IN		15 A	
Nominal voltage UN		125 V	

cUL Listed		http://database.ul.com/cgi-bin/XYV/template/LISEXT/1FRAME/index.htm	FILE E 238705
mm ² /AWG/kcmil		30-10	
Nominal current IN		15 A	
Nominal voltage UN		125 V	

cULus Listed			
--------------	---	--	--