

Surge protection device - D-LAN-CAT.5E - 2858991

Please be informed that the data shown in this PDF Document is generated from our Online Catalog. Please find the complete data in the user's documentation. Our General Terms of Use for Downloads are valid (<http://phoenixcontact.com/download>)



RJ-45 attachment plug with surge protection for LAN interfaces for inserting in the data line, incl. RJ45 cable



Key Commercial Data

Packing unit	1 pc
Weight per Piece (excluding packing)	143.0 g
Custom tariff number	85363010
Country of origin	Germany

Technical data

Dimensions

Height	94 mm
Width	25.4 mm
Depth	25.4 mm

Ambient conditions

Ambient temperature (operation)	-40 °C ... 80 °C
Degree of protection	IP20

General

Housing material	Aluminum, anodized
Color	black
Standards for clearances and creepage distances	DIN VDE 0110-1
	IEC 60664-1
Overvoltage category	II
Degree of pollution	2
Mounting type	Connection-specific intermediate plugging
Type	Attachment plug

Surge protection device - D-LAN-CAT.5E - 2858991

Technical data

General

Direction of action	Line-Line & Line-Shield & Shield-Earth Ground
---------------------	---

Protective circuit

IEC test classification	C1
	C2
	C3
	B2
	B3
VDE requirement class	C1
	C2
	C3
	B2
	B3
Maximum continuous voltage U_C (wire-wire)	± 7 V DC
Maximum continuous voltage U_C (wire-ground)	± 7 V DC
Nominal current I_N	1.5 A (25 °C)
Operating effective current I_C at U_C	≤ 100 μ A
Residual current I_{PE}	≤ 100 μ A
Nominal discharge current I_n (8/20) μ s (Core-Core)	350 A
Nominal discharge current I_n (8/20) μ s (Core-Earth)	2.5 kA
Max. discharge current I_{max} (8/20) μ s maximum (Core-Earth)	2.5 kA (in total)
Nominal pulse current I_{an} (10/700) μ s (Core-Core)	160 A
Nominal pulse current I_{an} (10/700) μ s (Core-Earth)	160 A
Output voltage limitation at 1 kV/ μ s (Core-Core) spike	≤ 22 V
Output voltage limitation at 1 kV/ μ s (Core-Earth) spike	≤ 80 V (equipotential bonding lead: 1 m)
Output voltage limitation at 1 kV/ μ s (Shield-Earth) spike	≤ 700 V (equipotential bonding lead: 1 m)
Residual voltage at I_n (conductor-conductor)	≤ 45 V
Residual voltage at I_n (conductor-ground)	≤ 45 V
Residual voltage at I_n (shield-ground)	≤ 700 V
Voltage protection level U_p (core-core)	≤ 50 V (C1, 500 V/250 A)
	≤ 20 V (B3, 2 kV/25 A)
Voltage protection level U_p (core-ground)	≤ 65 V (C1, 500 V/250 A - PA-Ltg: 1 m)
	≤ 25 V (B3, 2 kV/25 A - PA-Ltg: 1 m)
	≤ 60 V (C3, 7 kV/90 A - PA-Ltg: 1 m)
Voltage protection level U_p (shield-ground)	≤ 850 V (C2 - 4 kV/2 kA - PA-Ltg: 1 m)
Response time t_A (Core-Core)	≤ 500 ns
Response time t_A (Core-Earth)	≤ 100 ns

Surge protection device - D-LAN-CAT.5E - 2858991

Technical data

Protective circuit

Input attenuation aE, sym.	1 dB (up to 100 MHz, 100 Ω system)
Near-end crosstalk attenuation	36 dB (pair 3-6 against pair 4-5 in 100 Ω system / 100 MHz)
	40 dB (all other pair combinations in 100 Ω system/100 MHz)
Cut-off frequency fg (3 dB), sym. in 100 Ohm system	≤ 100 MHz
Capacity (Core-Core)	20 pF (typical)
Capacity (Core-Earth)	1 pF (typical)
Impulse durability (conductor-conductor)	B2 - 4 kV/100 A
	B3 (2 kV/25 A)
	C1 - 500 V / 250 A
Impulse durability (conductor-ground)	B2 - 4 kV/100 A
	C1 - 500 V / 250 A
	C2 - 4 kV/2 kA
	B3 (2 kV/25 A)

Connection data

Connection method	RJ45
Connection type IN	RJ45 socket
Connection type OUT	RJ45 socket
Connection method	Network interfaces (e.g. Ethernet, Token Ring and CDDI/FDDI)

Connection, equipotential bonding

Connection method	Cable connection
-------------------	------------------

Standards and Regulations

Standards/regulations	IEC 61643-21
	E VDE 0845-3-1
	DIN EN 50173-1

Classifications

eCl@ss

eCl@ss 4.0	27140201
eCl@ss 4.1	27130801
eCl@ss 5.0	27130801
eCl@ss 5.1	27130801
eCl@ss 6.0	27130807
eCl@ss 7.0	27130807
eCl@ss 8.0	27130807
eCl@ss 9.0	27130807

Surge protection device - D-LAN-CAT.5E - 2858991

Classifications

ETIM

ETIM 2.0	EC000943
ETIM 3.0	EC000943
ETIM 4.0	EC000943
ETIM 5.0	EC000943

UNSPSC

UNSPSC 6.01	30212010
UNSPSC 7.0901	39121610
UNSPSC 11	39121610
UNSPSC 12.01	39121610
UNSPSC 13.2	39121620

Approvals

Approvals


Approvals

UL Listed / EAC / EAC

Ex Approvals

Approvals submitted

Approval details

UL Listed 

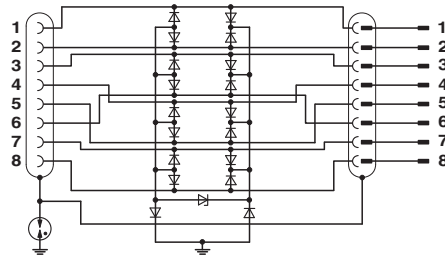
EAC

EAC

Drawings

Surge protection device - D-LAN-CAT.5E - 2858991

Circuit diagram



Dimensional drawing

