

Base strip - MCV 1,5/ 5-GF-3,5 - 1843253

Please be informed that the data shown in this PDF Document is generated from our Online Catalog. Please find the complete data in the user's documentation. Our General Terms of Use for Downloads are valid (<http://phoenixcontact.com/download>)

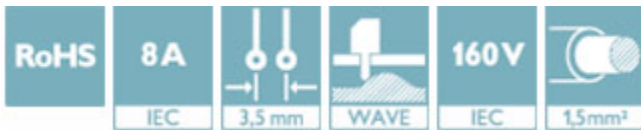
Header, Nominal current: 8 A, Rated voltage (III/2): 160 V, Number of positions: 5, Pitch: 3.5 mm, Color: green, Contact surface: Tin, Mounting: Wave soldering



The figure shows a 10-position version of the product

Why buy this product

- ✓ Well-known mounting principle allows worldwide use
- ✓ Screwable flange for superior mechanical stability
- ✓ Vertical connection enables multi-row arrangement on the PCB
- ✓ Maximum flexibility when it comes to device design – one header for connectors with different connection technologies



Key Commercial Data

Packing unit	1 STK
Weight per Piece (excluding packing)	2.490 g
Custom tariff number	85366990
Country of origin	Germany

Technical data

Dimensions

Length	7.25 mm
Pitch	3.50 mm
Dimension a	14 mm
Constructional height	10 mm
Length of the solder pin	3.4 mm
Pin dimensions	0,8 x 0,8 mm
Hole diameter	1.2 mm

General

Base strip - MCV 1,5/ 5-GF-3,5 - 1843253

Technical data

General

Range of articles	MCV 1,5/...-GF
Insulating material group	IIIa
Rated surge voltage (III/3)	2.5 kV
Rated surge voltage (III/2)	2.5 kV
Rated surge voltage (II/2)	2.5 kV
Rated voltage (III/3)	160 V
Rated voltage (III/2)	160 V
Rated voltage (II/2)	250 V
Connection in acc. with standard	EN-VDE
Nominal current I_N	8 A
Maximum load current	8 A
Insulating material	PBT
Flammability rating according to UL 94	V0
Color	green
Number of positions	5

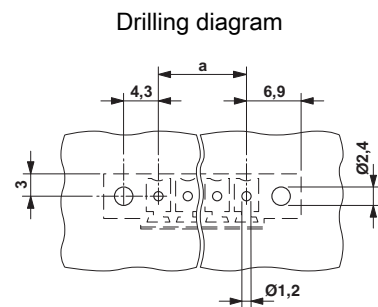
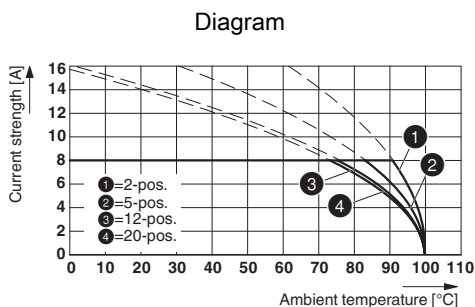
Standards and Regulations

Connection in acc. with standard	EN-VDE
	CSA
Flammability rating according to UL 94	V0

Environmental Product Compliance

China RoHS	Environmentally Friendly Use Period = 50
	For details about hazardous substances go to tab "Downloads", Category "Manufacturer's declaration"

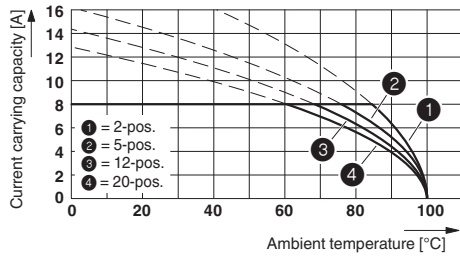
Drawings



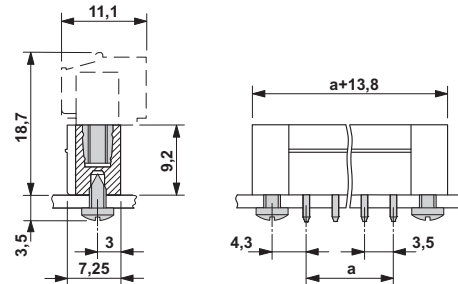
Type: MC 1,5/...-STF-3,5 with MCV 1,5/...-GF-3,5

Base strip - MCV 1,5/ 5-GF-3,5 - 1843253

Diagram



Dimensional drawing



Diagram

Approvals

Approvals

Approvals

CSA / VDE Gutachten mit Fertigungsüberwachung / IECCEB Scheme / CCA / cULus Recognized / EAC

Ex Approvals

Approval details

CSA <http://www.csagroup.org/services/testing-and-certification/certified-product-listing/13631>


	B	D
Nominal current I _N	8 A	8 A
Nominal voltage U _N	300 V	300 V

VDE Gutachten mit Fertigungsüberwachung <http://www.vde.com/en/Institute/OnlineService/VDE-approved-products/Pages/Online-Search.aspx40011723>

Nominal current I _N	8 A
Nominal voltage U _N	160 V

Base strip - MCV 1,5/ 5-GF-3,5 - 1843253

Approvals

IECEE CB Scheme  http://www.iecee.org/ DE1-56063-B1B2	
Nominal current IN	8 A
Nominal voltage UN	160 V

CCA CCA/ DE1 34219	
Nominal current IN	8 A
Nominal voltage UN	160 V

cULus Recognized http://database.ul.com/cgi-bin/XYV/template/LISEXT/1FRAME/index.htm E60425-20110128		
	B	D
Nominal current IN	8 A	8 A
Nominal voltage UN	300 V	300 V

EAC B.01742
