

## Coding element - HC-CBU - 1676860


Please be informed that the data shown in this PDF Document is generated from our Online Catalog. Please find the complete data in the user's documentation. Our General Terms of Use for Downloads are valid (<http://phoenixcontact.com/download>)



Coding socket for coding up to 16 connectors



### Key Commercial Data

Packing unit	1 pc
Minimum order quantity	10 pc
GTIN	 4 017918 129484
Weight per Piece (excluding packing)	2.91 g
Custom tariff number	73181510
Country of origin	Germany

### Technical data

#### General

Material	Steel
Note	Prevents most cases of the connector being inserted at an angle; Prescribed for contact inserts of series HC-D... and HC-DD...
Assembly instructions	Cannot be used for modular systems.

### Classifications

#### eCl@ss

eCl@ss 4.0	27140816
eCl@ss 4.1	27140816
eCl@ss 5.0	27143424
eCl@ss 5.1	27143424

## Coding element - HC-CBU - 1676860

### Classifications

#### eCl@ss

eCl@ss 6.0	27143424
eCl@ss 7.0	27440209
eCl@ss 8.0	27440203

#### ETIM

ETIM 2.0	EC001121
ETIM 3.0	EC001121
ETIM 4.0	EC002498
ETIM 5.0	EC002311

#### UNSPSC

UNSPSC 6.01	30211817
UNSPSC 7.0901	39121416
UNSPSC 11	43172601
UNSPSC 12.01	39121522
UNSPSC 13.2	39121522

### Approvals

#### Approvals

---

Approvals

EAC

---

Ex Approvals

---

Approvals submitted

---

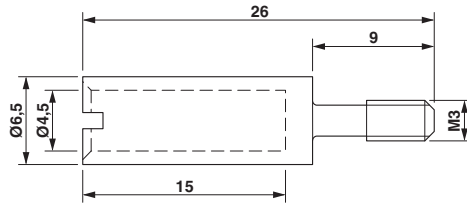
Approval details

EAC
-----

### Drawings

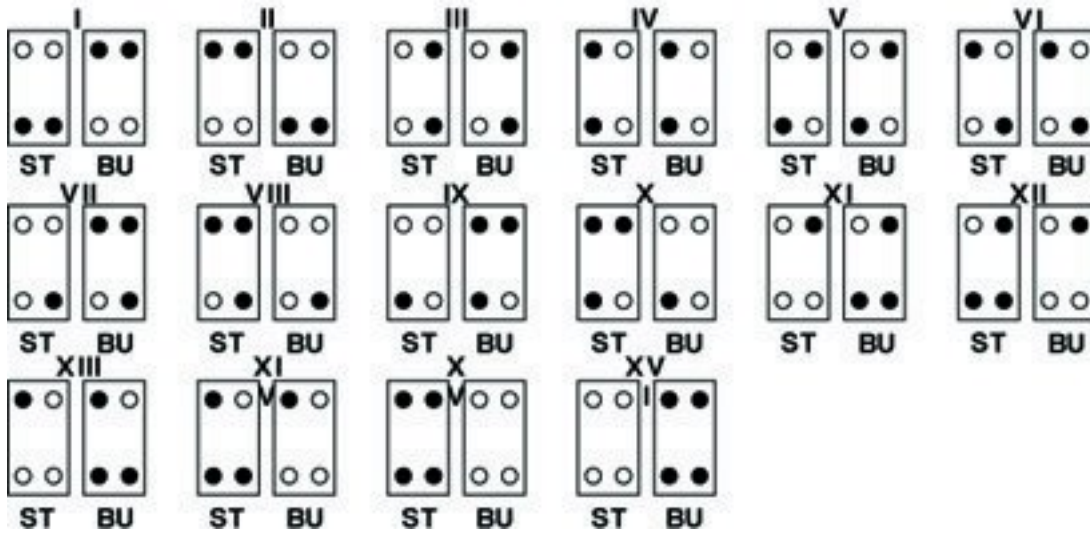
# Coding element - HC-CBU - 1676860

Dimensional drawing



Dimensional drawing

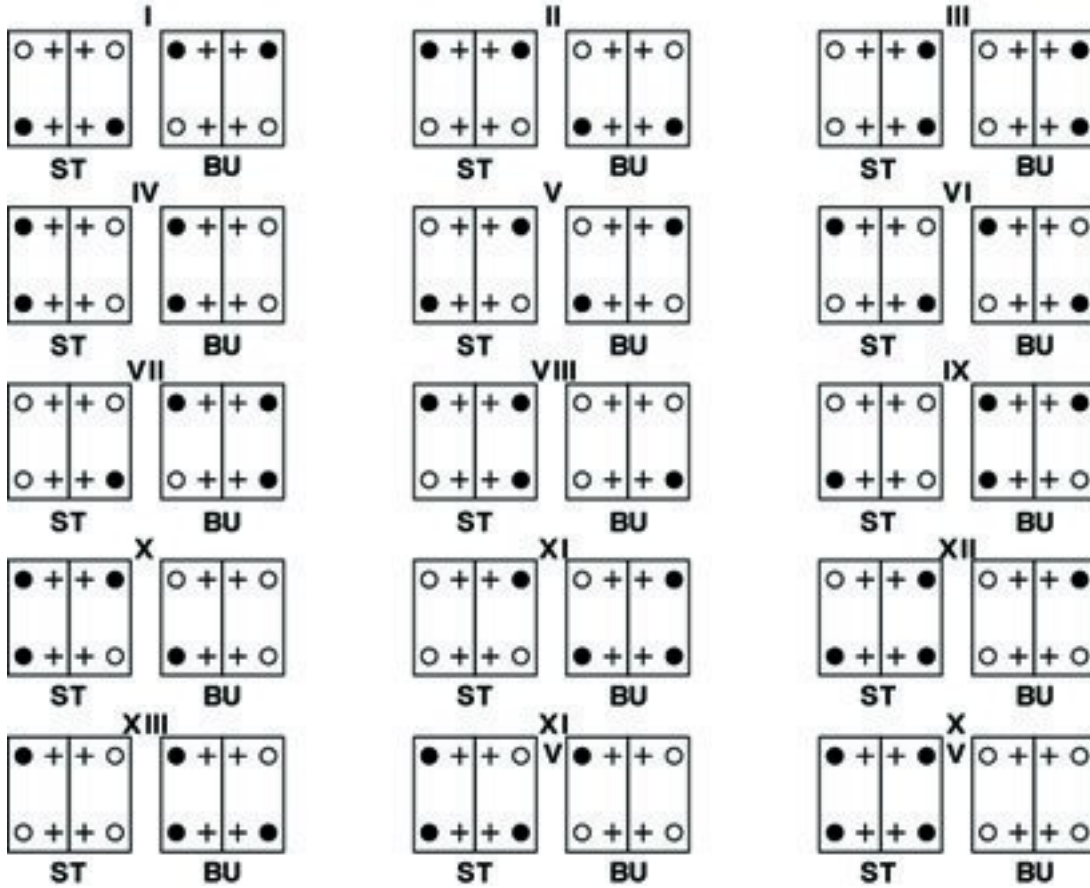
Circuit diagram



Coding for housings with one contact insert

# Coding element - HC-CBU - 1676860

Circuit diagram



Coding for housings with two contact inserts