

Panel mounting frames - VS-PPC-F1-RJ45-P0BK-1R-PHA - 1657847

Please be informed that the data shown in this PDF Document is generated from our Online Catalog. Please find the complete data in the user's documentation. Our General Terms of Use for Downloads are valid (<http://phoenixcontact.com/download>)



RJ45 panel mounting frame, IP67, for push-pull interlocking, plastic, for PCB connection, for square panel cutout, with grommet, without mounting screws



Key Commercial Data

Packing unit	1 pc
Weight per Piece (excluding packing)	5.6 g
Custom tariff number	85366990
Country of origin	Germany

Technical data

Mechanical characteristics

Insertion/withdrawal cycles	≥ 500
Color	black

Ambient conditions

Ambient temperature (operation)	-40 °C ... 70 °C
---------------------------------	------------------

Material data

Flammability rating according to UL 94	V0
Housing material	PA-GF
Material	Plastic
Sealing material	NBR
Seal material	NBR

Electrical characteristics

Degree of pollution	2
---------------------	---

Standards and Regulations

Panel mounting frames - VS-PPC-F1-RJ45-P0BK-1R-PHA - 1657847

Technical data

Standards and Regulations

Flammability rating according to UL 94	V0
--	----

Classifications

eCl@ss

eCl@ss 4.0	272607xx
eCl@ss 4.1	27260701
eCl@ss 5.0	27260701
eCl@ss 5.1	27260701
eCl@ss 6.0	27260708
eCl@ss 7.0	27440312
eCl@ss 8.0	27440210

ETIM

ETIM 3.0	EC001121
ETIM 4.0	EC001121
ETIM 5.0	EC002310

UNSPSC

UNSPSC 6.01	31261501
UNSPSC 7.0901	31261501
UNSPSC 11	31261501
UNSPSC 12.01	31261501
UNSPSC 13.2	31261501

Approvals

Approvals

Approvals

EAC / EAC

Ex Approvals

Approvals submitted

Panel mounting frames - VS-PPC-F1-RJ45-P0BK-1R-PHA - 1657847

Approvals

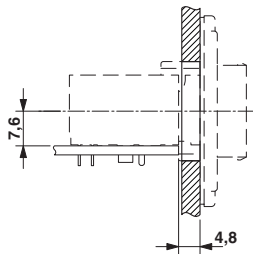
Approval details

EAC

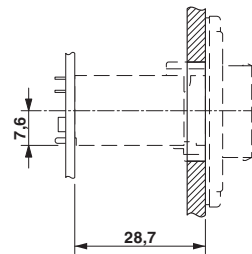
EAC

Drawings

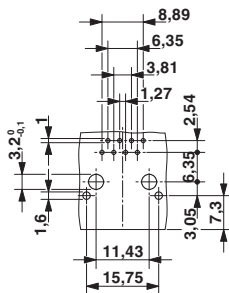
Dimensional drawing



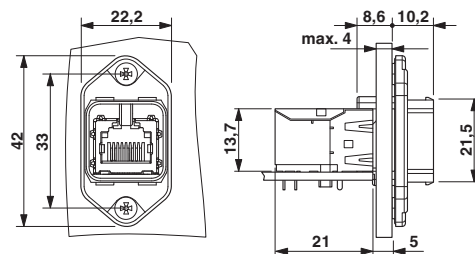
Dimensional drawing



Drilling diagram



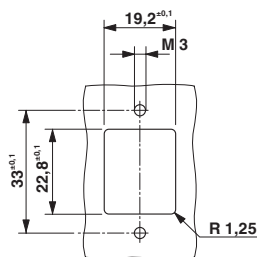
Dimensional drawing



Push-Pull panel mounting frame RJ45

Drilling diagram

Dimensional drawing



Panel cutout

