

Fax Back Document #1205

CRE SERIES

- Broad use in industrial applications
- Flexible wire leads
- External mounting tab
- ½ watt non-inductive, high pulse resistor

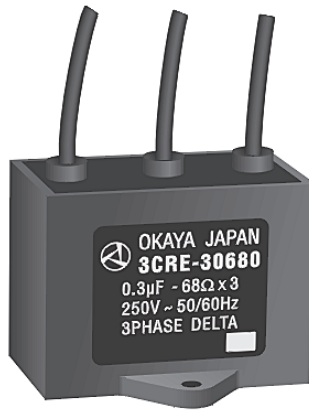
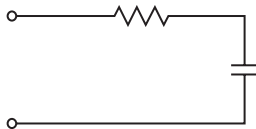
Safety Agency : Standard	File No.
UL : UL1283	E78644

3CRE/6CRE

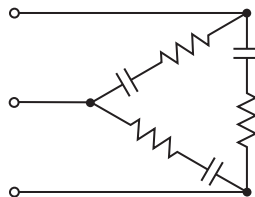
- For use in three phase industrial applications
- Two different circuit configurations for wide use conditions
- Flexible wire leads and external mounting tab
- ½ watt non-inductive, high pulse resistor



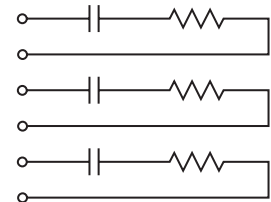
CRE



3CRE



6CRE



ELECTRICAL SPECIFICATIONS

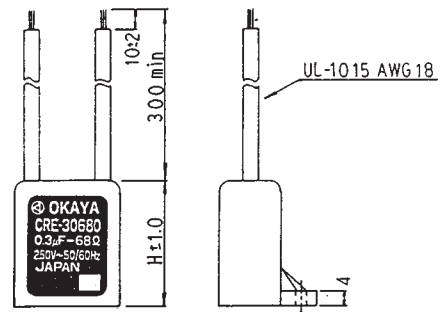
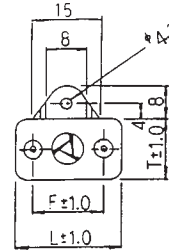
Operating temp. range : -40 ~ + 85°C

Safety Standard	Model No.	Capacitance Cx (µF±20%)	Resistance Ω ±30%	Pulse condition (Max)				Peak pulse voltage	Test voltage JISC5102	Insulation resistance
				Peak to Peak (P-P)	Pulse width	Repetitive frequency	Pulse width (sec) x Frequency(Hz)			
UL	CRE-10201	0.1	200(½W)	700V max	50msec.max	360Hz max	0.45max	800V max	Line to Line 625Vrms 50/60Hz 60sec. Line to Case 2000Vrms 50/60Hz 60sec.	Line to Line 10,000M Ω min. Line to Case 10,000M Ω min. (at 20°C 500 VDC)
	CRE-20151	0.2	150(½W)		50msec.max		0.15max			
	CRE-30680	0.3	68(½W)		70msec.max		0.1max			
	CRE-50500	0.5	50(½W)		70msec.max		0.07max			
	3CRE-30680	0.3/1phase	68(½W)/1phase		70msec.max		0.1max			
	3CRE-50500	0.5/1phase	50(½W)/1phase		70msec.max		0.07max			
	6CRE-50500	0.5/1phase	50(½W)/1phase		70msec.max		0.07max			

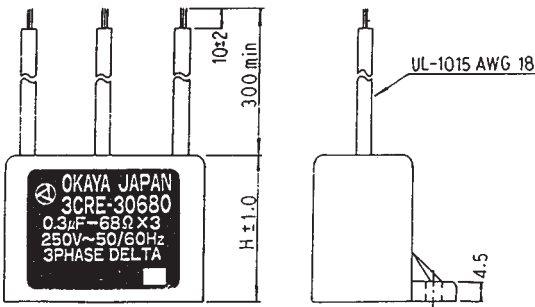
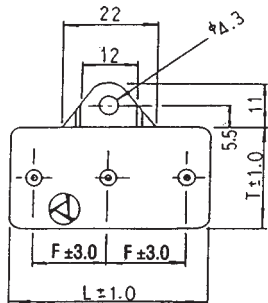
MECHANICAL SPECIFICATIONS:

Case Material: Polybutylene Terephthalate (FR-PBT)
 UL-94 Flame Class V-O
 Potting Material: UL-94 Flame Class V-O
 Leads: Tinned Stranded Copper Wire
 Polyvinylchloride (PVC) Insulation
 Soldered Capacitor Element
 Capacitor: Double Wound, Oil Impregnated,
 Metallized Polyester Film

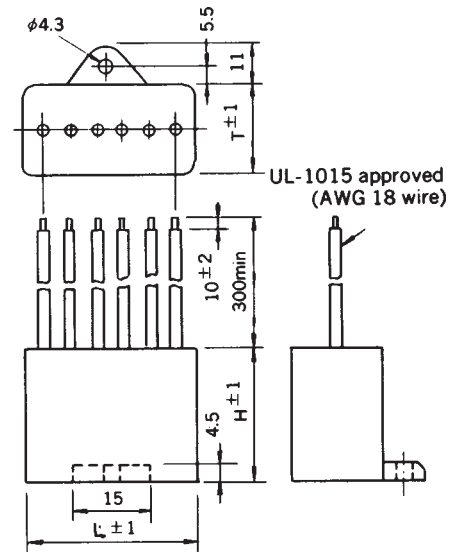
CRE



3CRE



6CRE



All Dimensions in MM

MECHANICAL DIMENSIONS

Other lead lengths available—consult factory.

Safety Standard	Model No.	Capacitance (μF±20%)	Resistance Ω±30%	Dimensions			
				L	H	T	F
	CRE-10201	0.1	200(½W)	23.0	26.0	14.0	13.0
	CRE-20151	0.2	150(½W)				
	CRE-30680	0.3	68(½W)	25.0	32.0	16.0	15.0
	CRE-50500	0.5	50(½W)				
	3CRE-30680	0.3/1phase	68(½W)1 phase	44.0	35.0	26.0	
	3CRE-50500	0.5/1phase	50(½W)1 phase				
	6CRE-50500	0.5/1phase	50(½W)1 phase	48.0	35.0	26.0	