

## WIRELESS DIGITAL PAN & TILT SURVEILLANCE SYSTEM

### MODEL No.: WSS-1

- Encrypted digital wireless signal for privacy protection
- Automatic channel switching scheme for avoiding interference
- Remote controlled pan & tilt camera w/ 2X digital zoom
- Audio/Video output jack
- Headphone jack
- Color LCD screen



**Keep an eye on what you love**



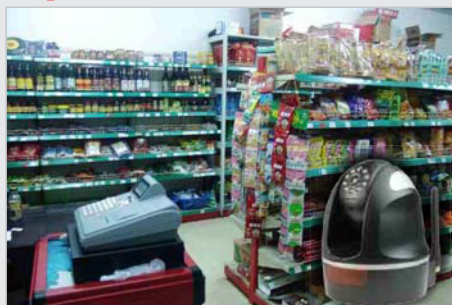
Maximum signal transmission of  
**1000 ft (300m)**



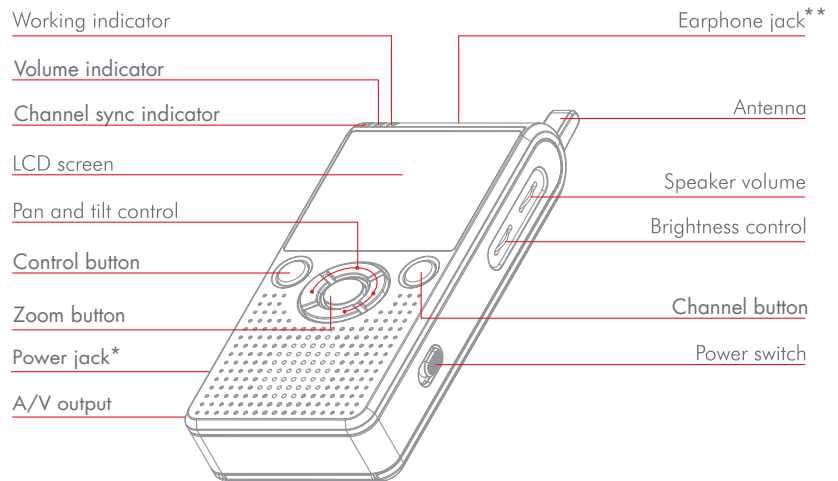
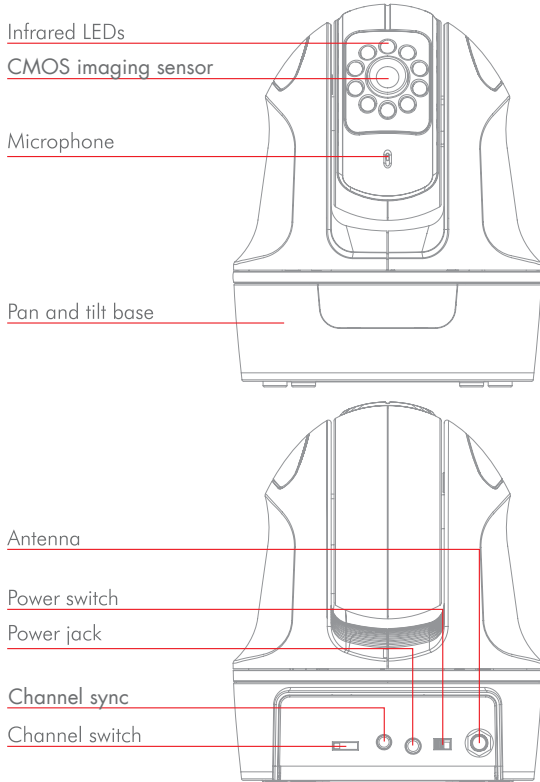
\* Environmental interference and product placement may affect actual transmission range

<b>2.4"</b> LCD screen	<b>Pan&amp;Tilt</b> Remote Controlled	<b>Night Vision</b> Infrared LEDs	<b>Speaker</b> Built-in	<b>4 Camera Compatible</b> Multi-channel
---------------------------	--	--------------------------------------	----------------------------	---

**Appropriate for use in home security, in-store surveillance, and monitoring infants as well as the elderly.**



## Structure



\*Receiver also works with 4AAA Batteries (not included)  
 \*\*2.5mm to 3.5mm Adapter Included

## Features

- Real-time high-quality video and audio monitoring
- Built-in digital wireless transmission module
- Video rotate allows camera to be mounted from from a wall or ceiling
- Control pan & tilt and viewing functions wirelessly
- 2.4" LCD screen with 300K pixels resolution
- Infrared LEDs allow for nighttime surveillance
- Camera pans 270° and tilts 120°
- High-quality microphone and built-in speaker
- Operates on 4 different wireless channels
- Maximum signal transmission of 1000ft (300m)
- A/V output for monitor/DVR
- Earphone output
- Optional ceiling/wall camera mounting bracket WSS-6 (sold separately)

## Specifications

	Item	Specifications
GENERAL	Transmission Frequency	ISM 2,400~2,483 MHz
	Transmission Power	17dBm +/-3
	Unobstructed Effective Range	1000ft (Max.)
	Spread Spectrum	FHSS
	Modulation Mode	GFSK
	Operating Temperature	+32°F~+122°F
CAMERA	Operating Humidity	15%~85%
	Imaging Sensor Type	CMOS
	Picture Total Pixels	640×480
	Minimum Illumination	0Lux (IR ON) 5Lux (IR OFF)
	Night Vision Distance	16ft (Min.)
	View Angle	55°
	Bandwidth	3MHz
	Sound Detection Sensitivity	< -38dB
	Consumption Current (Max.)	500mA
	Power Supply	5V <sub>DC</sub>
	Dimensions (W×D×H) (inches)	4.41 × 4.29 × 5.24
RECEIVER	Weight	.93 lbs
	LCD Screen Type	2.4 inches TFT-LCD
	Effective Pixels	480×234
	Receiving Sensitivity	≤ -80dBm
	Working Time	3hours
	Consumption Current (Max.)	200mA
	Power Supply	5V <sub>DC</sub>
	Dimensions (W×D×H) (inches)	2.68 × 5.87 × 1.02
Weight	.30 lbs	

\*All the specifications are subject to change without prior notice.

**NTE**® NTE Electronics, Inc.,  
 44 Farrand Street,  
 Bloomfield, NJ 07003  
 Phone: 973-748-5089  
 Fax: 973-748-6224

