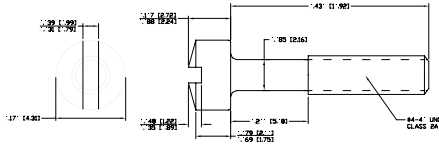
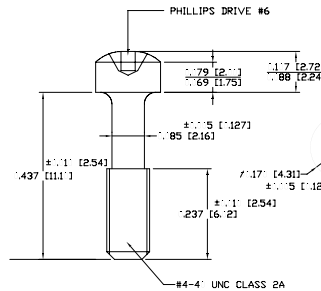


CAPTIVE SCREWS - THUMBSCREWS

CAPTIVE SCREWS FOR CM, CMP AND CPP SERIES COVERS



4-40 x 1/2" Captive Screw with Slotted Head.
Part Number: B71E314165S

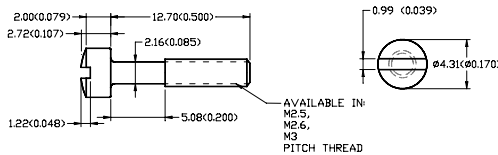


Material: Steel
Finish: Bright Zinc Finish



Captive Screws with Phillips Head.
Description Part Number
4-40 x 7/16" B71E314164PS
4-40 x 1/2" B71E314144PS

METRIC CAPTIVE SCREWS FOR CM, CMP AND CPP SERIES COVERS

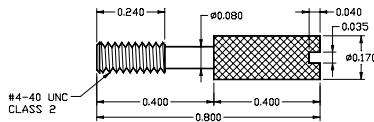


PART NUMBERS:
M2.5 X 1/2" B71E3005134M25S
M2.6 X 1/2" B71E3005134M26S
M3 X 1/2" B71E3005134M3S

STANDARD THUMBSCREWS FOR CM, CMP AND CPP SERIES COVERS

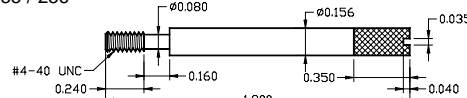


Material: Steel
Finish: Bright Zinc or Nickel Finish

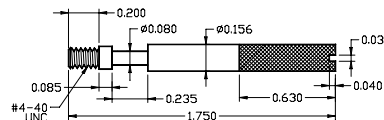


Description Part Number
4-40 x 0.800" B71E014254
4-40 x 0.840" B71E014289

B71E014255 / 256

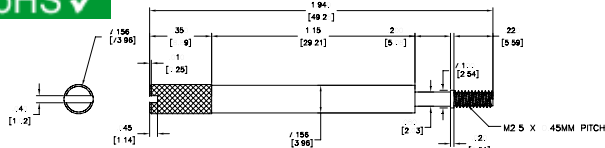


B71E014276



Description Part Number
4-40 x 1.76" B71E014276
4-40 x 1.90" B71E014255
4-40 x 1.94" B71E014256

METRIC THUMBSCREWS FOR CM, CMP AND CPP SERIES COVERS



Material: Steel
Finish: Bright Zinc Finish

Description Part Number
M2.5 X 1.94" B71E300611M25
M2.6 X 1.90" B71E300612M26
M3 X 1.90" B71E300613M3

CUSTOM HARDWARE



Northern Technologies designs and manufactures a wide range of Custom Interconnection Hardware including Thumbscrews, Machine Screws, Captive Screws, Washers, Ferrules, and Metal Stampings (available in various materials, Rockwell hardness and plating finishes). These products can be designed and manufactured with short lead times and low minimum order quantities. Contact our Sales Department for further information at: (905) 475-9320 or 1-800-456-1875.