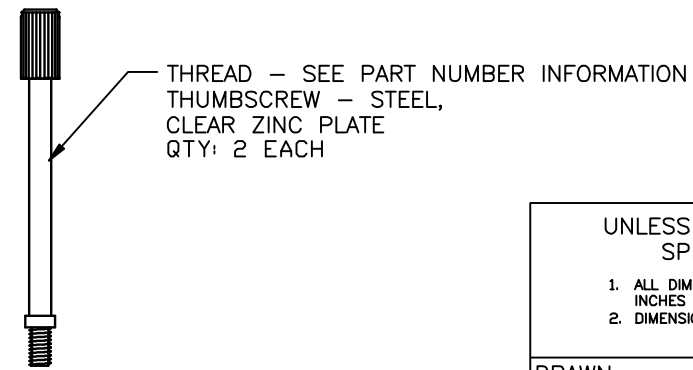
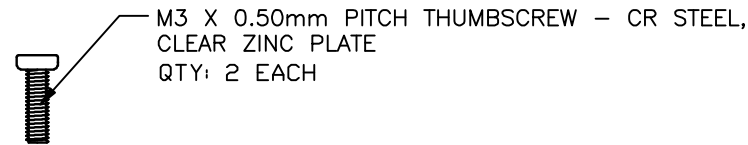
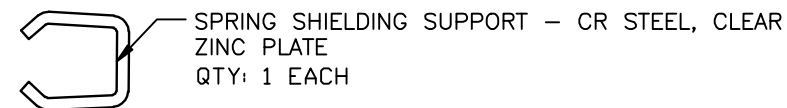
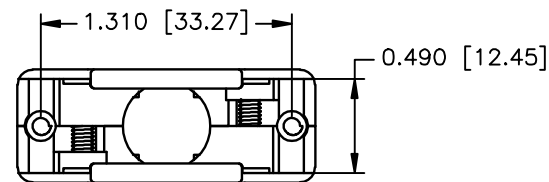
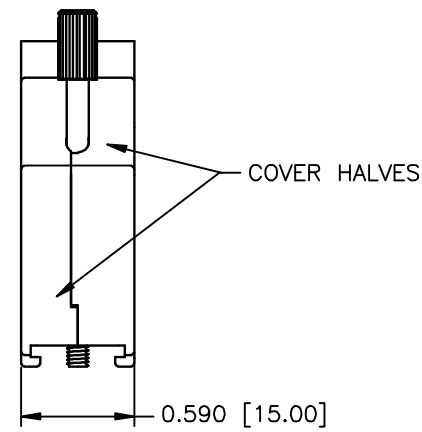
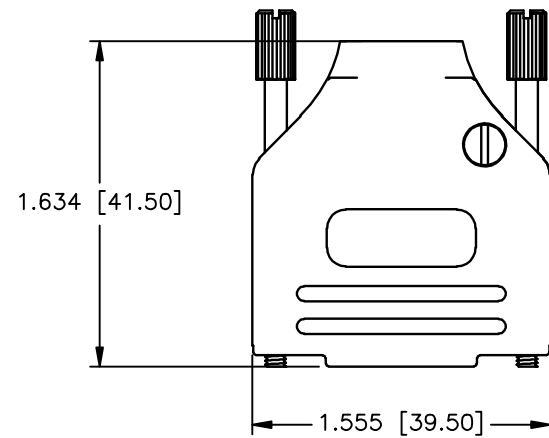


REVISIONS				
ZONE	REV	DESCRIPTION	DATE	APPROVED
	A	ECN 0679	30-OCT-09	
	B	ECN 0684	15-APR-10	
	C	ECN 0784	06-JUN-16	



PART NUMBER INFORMATION

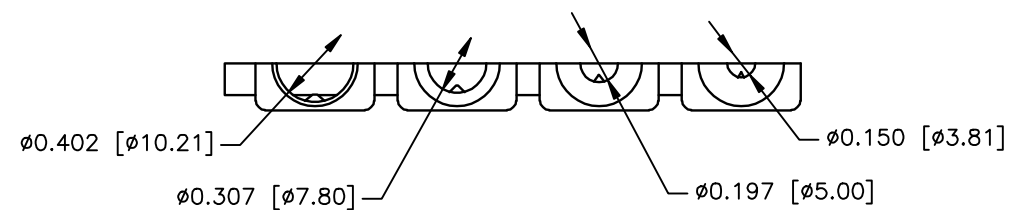
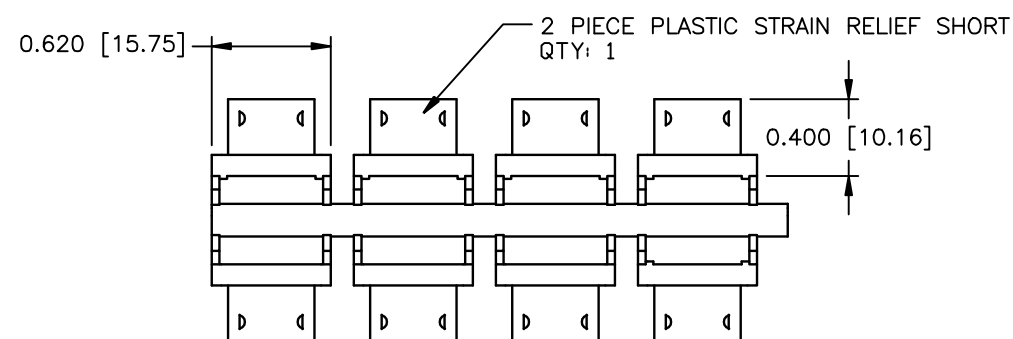
PART#	LOGO STYLE	THREAD	SUPPLIED
MHDETZK15K	NO LOGO	4-40 UNC	PACKAGED
MHDETZK15KM25	NO LOGO	M2.5	PACKAGED
MHDETZK15KM26	NO LOGO	M2.6	PACKAGED
MHDETZK15KM3	NO LOGO	M3	PACKAGED

CONNECTOR COVER:

1. MATERIAL: ZINC DIE-CAST
2. FINISH: NICKEL PLATING
3. DIMENSIONS: INCHES [MM]
4. TOLERANCE: ±0.015 [0.381]

COMPRESSION INSERT TREE

1. MATERIAL: ABS
2. COLOR: BLACK
3. DUROMETER: 70 - TYPE D
4. DIMENSIONS: INCHES [MM]
5. TOLERANCE: ±0.015 [0.381]



THIS IS A CONTROLLED DOCUMENT AND IS SUBJECT TO CHANGE. CONTACT NORTHERN TECHNOLOGIES ENGINEERING FOR THE LATEST REVISION.

UNLESS OTHERWISE SPECIFIED 1. ALL DIMENSIONS ARE IN INCHES (MM) 2. DIMENSIONS ARE TYPICAL		Northern Technologies <small>THIS DRAWING IS THE PROPERTY OF NORTHERN TECHNOLOGIES AND SHOULD NOT BE REPRODUCED WITHOUT NORTHERN TECHNOLOGIES WRITTEN PERMISSION.</small>		
DRAWN JSD		14-JUL-06		
CHECKED SCN		14-JUL-06		
ISSUED		14-JUL-06		
PART NUMBER DESCRIPTION		SEE PART NUMBER INFORMATION CMA 15 STRAIGHT EXIT METAL COVER NICKEL		
SIZE B	CODE 200_200	DWG NO. 0002-200-200	REV	
SCALE N.T.S.		SHEET 1 OF 1		