

# MICRO SWITCH

FREERPORT ILLINOIS, U.S.A  
A DIVISION OF HONEYWELL

FED. MFG. CODE 91929

# SWITCH-BASIC

CATALOG LISTING

## WA-1RX-A41

WA-1RX-A41

PAGE 1 OF 1

M

DRAWING NUMBER

ISSUE 10

REPLACES

RELEASE NO. PR-315

CHECK

REVISIONS

A	C080462	JALA	11 JUN 95
B	C082632	DLT	25 JUL 96
C	C084043	DLT	21 MAR 97
D	C093346	DLT	23 SEP 98

CHECK

CHECK

CHECK

CHECK

CHECK

CHECK

CHECK

CHECK

CHECK

CHECK

CHECK

CHECK

CHECK

CHECK

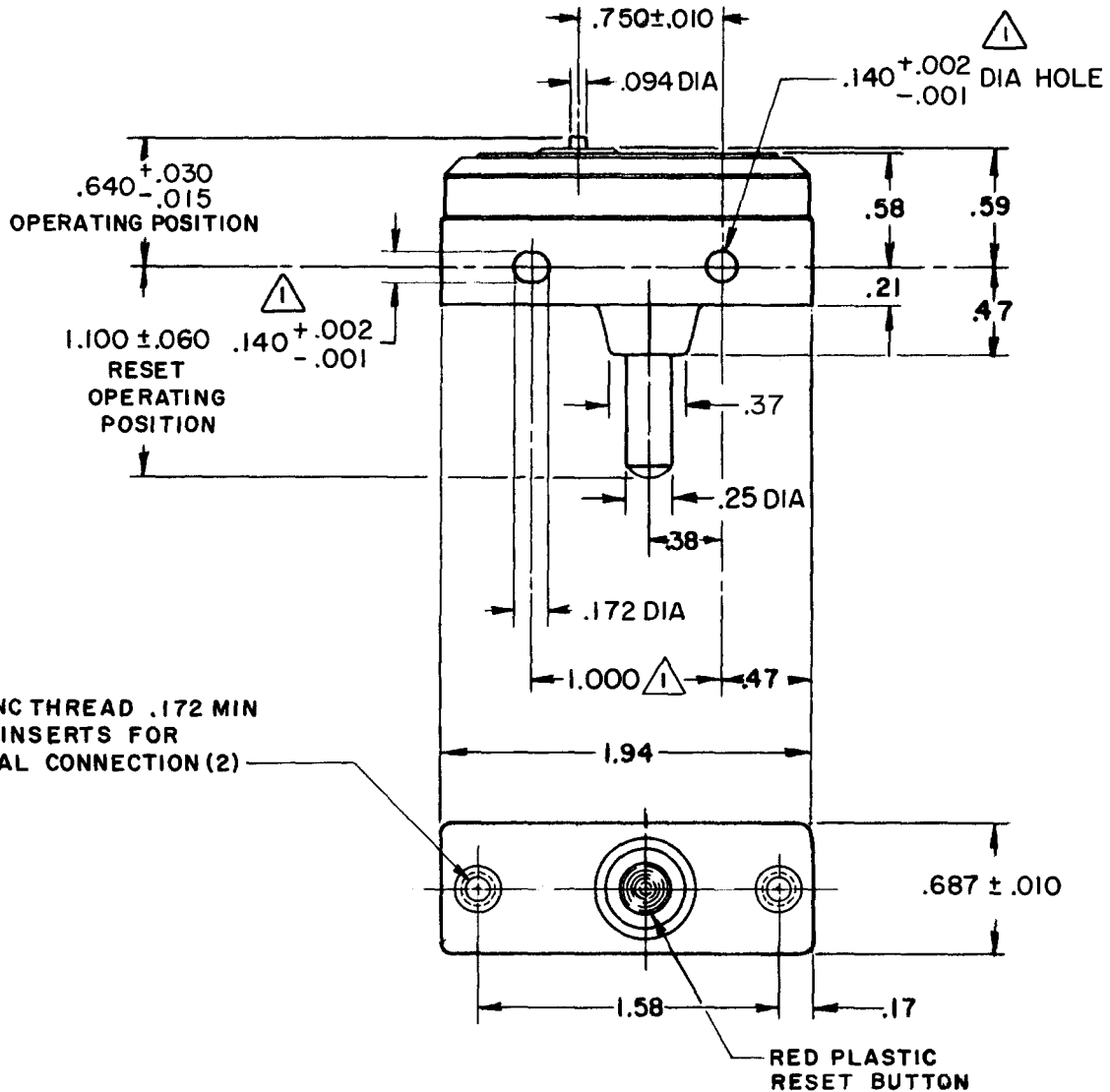
CHECK

CHECK

CHECK

CHECK

CHECK



8-32 UNC THREAD .172 MIN DEPTH INSERTS FOR TERMINAL CONNECTION (2)

RED PLASTIC RESET BUTTON

### NOTES

- ① MOUNTING HOLES WILL ACCEPT PINS OR SCREWS OF .139 MAX DIA ON 1.000±.002 CENTERS
- 2 - CONTACT MATERIAL - FINE SILVER

THIS DRAWING COVERS A PROPRIETARY ITEM AND IS THE PROPERTY OF MICRO SWITCH, A DIVISION OF HONEYWELL. THIS DRAWING IS NOT TO BE COPIED OR USED WITHOUT THE APPROVAL OF MICRO SWITCH.

### CHARACTERISTICS

OPERATING FORCE ----- 20 OZ MAX  
 DIFFERENTIAL TRAVEL ----- .008 MAX  
 (WITH RESET PLUNGER HELD FULLY DEPRESSED)  
 OVERTRAVEL ----- .010 MIN

### RESET CHARACTERISTICS

OPERATING FORCE ----- 25 OZ MAX

### ELECTRICAL DATA

CONTACT ARRANGEMENT  
 SINGLE POLE NORM CLOSED  
 MAINTAINED CONTACT

L178  
 20A 125, 250, 277 VAC  
 3/4HP 125 VAC, 1 1/2HP 250 VAC

L288  
 L299  
 L308

CE Ⓟ TP

20(3)A 250V ~ T85 5E4

### SCALE FULL

DO NOT SCALE PRINT

UNLESS OTHERWISE NOTED  
 DIMENSIONS ARE IN INCHES  
**TOLERANCES ARE:**

ONE PLACE	(.0)	±.030
TWO PLACE	(.00)	±.015
THREE PLACE	(.000)	±.005
ANGLES		H

WEIGHT

FORMTEK

DRAWN

GFS 13 AUG 68