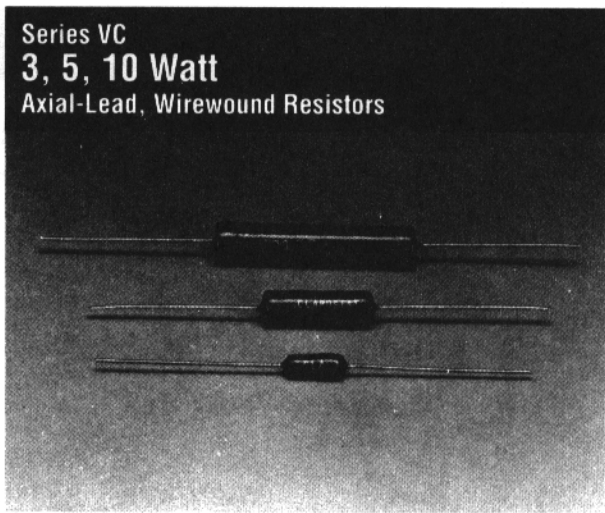


Series VC  
**3, 5, 10 Watt**  
 Axial-Lead, Wirewound Resistors



**Description**

The VC series is a low-cost, high-quality, axial-lead resistor. Its small size makes it excellent for circuit board, point-to-point, or terminal board applications. The VC series is made in accordance to MIL-R-26 standards and is ideal for today's technology.

**Features**

- *Rugged vitreous enamel*
- *Low cost*
- *All-welded construction*
- *Uniformly tinned leads*
- *Meets or exceeds MIL-R-26 standards*
- *Non-inductive winding available*

**Series VC Material Specifications**

*Coating*  
 Conformal vitreous enamel

*Core*  
 Ceramic

*Terminals*  
 Tinned leads, solderable to MIL-R-26 standards

*Weight*

VC3D	VC5E	VC10F
3 watt	5 watt	10 watt
.032 oz.	.096 oz.	.224 oz.
.896 gms.	2.69 gms.	6.27 gms.

**Series VC Electrical Specifications**

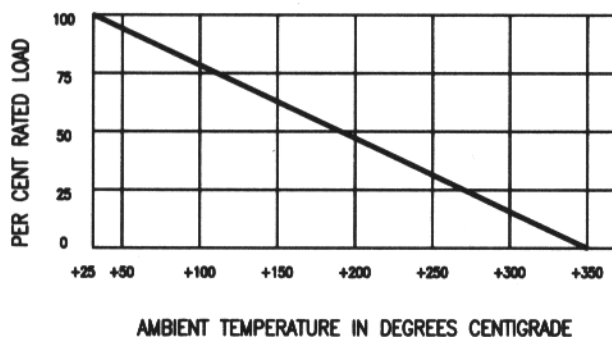
*Resistance Tolerance*  
 5% standard 1 ohm and up  
 ±10% under 1 ohm  
 Closer tolerances available.

*Power Rating*  
 Based on 25°C free air rating

Series	Minimum Wattage	Maximum Wattage
VC3D	3.0	3.25
VC5E	5.0	6.50
VC10F	10.0	11.00

Figure 1

**Series VC Derating**



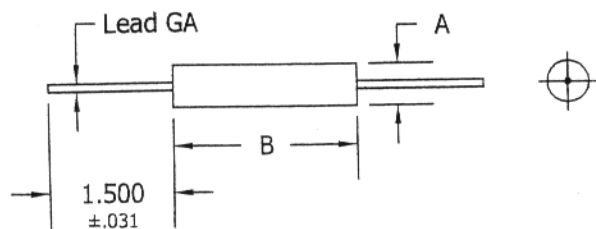
*Overload*

Under 5 watts, 5 times rated wattage for 5 seconds.  
 5 watts and over, 10 times rated wattage for 5 seconds.

*Temperature Coefficient*  
 ±150 ppm (closer TC available)

*Dielectric Withstanding Voltage*  
 500 Vac

Series VC Dimensions



	A*	B*	Lead GA
VC3D	.220"	.500"	20
VC5E	.276"	1.000"	20
VC10F	.394"	1.844"	20

\* Maximum Dimensions

11 WATT				VC10F	
.1	18	150	750	3.9K	15K
.13	20	180	800	4K	16K
.15	22	200	820	4.5K	17.5K
.2	25	220	900	4.7K	18K
.25	27	225	1K	5K	20K
.3	30	250	1.1K	5.6K	22K
.33	33	270	1.2K	6K	22.5K
.50	35	300	1.25K	6.8K	25K
.75	39	330	1.5K	7K	27K
1	40	350	1.75K	7.5K	30K
1.5	47	390	1.8K	8K	33K
2	50	400	2K	8.2K	35K
3	56	450	2.2K	8.5K	39K
4	68	470	2.25K	9K	40K
5	75	500	2.5K	10K	45K
7.5	82	560	2.7K	11K	47K
10	100	600	3K	12K	50K
12	120	680	3.3K	12.5K	
15	125	700	3.5K	13.5K	

**Series VC Standard Resistance Values**

Stock Values

3.25 WATT			VC3D		
.1	10	68	390	1.25K	5K
.13	12	75	400	1.5K	5.6K
.15	15	82	450	1.75K	6K
.2	18	100	470	1.8K	6.8K
.25	20	120	500	2K	7K
.3	22	125	560	2.2K	7.5K
.33	25	150	600	2.25K	8K
.5	27	180	680	2.5K	8.2K
.75	30	200	700	2.7K	9K
1	33	220	750	3K	10K
1.5	35	225	800	3.3K	
2	39	250	820	3.5K	
3	40	270	900	3.9K	
4	47	300	1K	4K	
5	50	330	1.1K	4.5K	
7.5	56	350	1.2K	4.7K	

6.5 WATT			VC5E		
.1	12	75	450	1.8K	7K
.13	15	82	470	2K	7.5K
.15	18	100	500	2.2K	8K
.2	20	120	560	2.25K	8.2K
.25	22	125	600	2.5K	9K
.3	25	150	680	2.7K	10K
.33	27	180	700	3K	12.5K
.5	56	200	750	3.3K	15K
.75	30	220	800	3.5K	17.5K
1	33	225	820	3.9K	18K
1.5	35	250	900	4K	20K
2	39	270	1K	4.5K	22K
3	40	300	1.1K	4.7K	22.5K
4	47	330	1.2K	5K	25K
5	50	350	1.25K	5.6K	
7.5	56	390	1.5K	6K	
10	68	400	1.75K	6.8K	

Standard Resistance Values continued, next column

Notes:

Standard packaging: 10 pieces per pack.  
Tape and reel available.  
Special resistance values available.  
Non-inductive winding available.  
For specials, please consult Factory.

**Series VC How To Order**

Series/Wattage + Resistance = Part number

Example:  
3 watt + 10K ohm = VC3D-10K