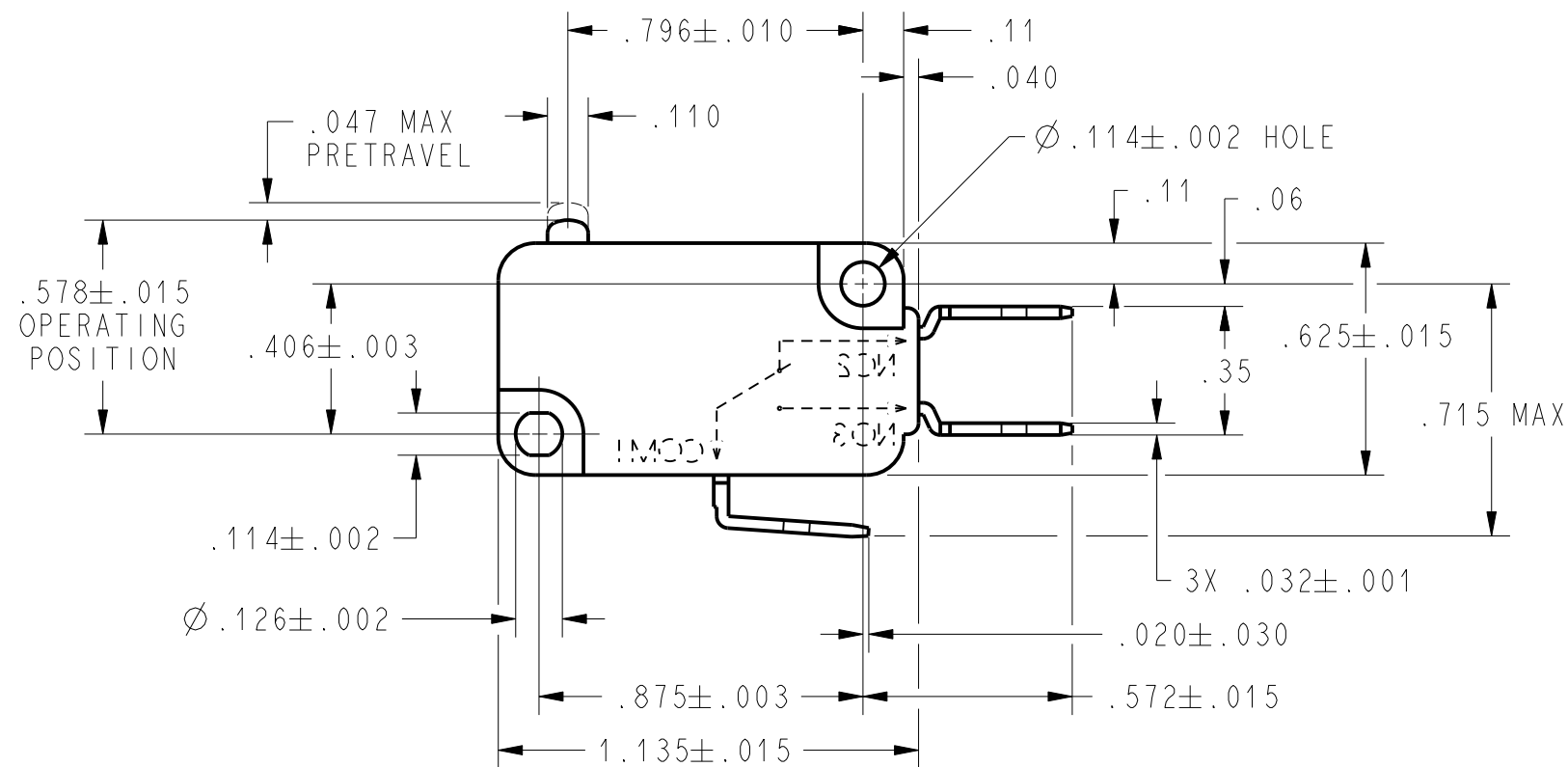
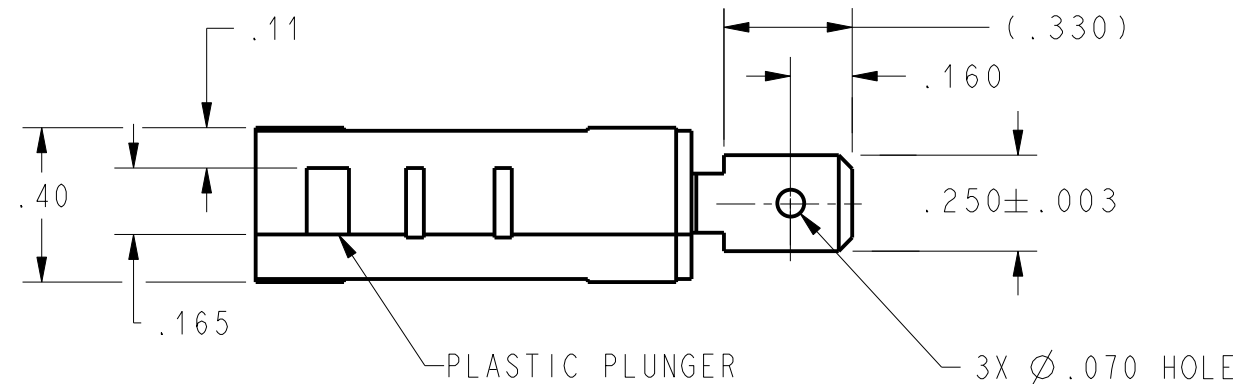


CW-C4079

SUPERSEDES
X115354-V7

| REV | DOCUMENT | CHANGED BY | CHECK |
|-----|----------|-------------|-------|
| A | 0002609 | CSL 12DEC03 | MDM |



| CHARACTERISTICS | |
|--------------------------|---------------|
| OPERATING FORCE----- | 15 GRAMS MAX |
| DIFFERENTIAL FORCE-- | 5.2 GRAMS MAX |
| DIFFERENTIAL TRAVEL----- | .006 MAX |
| OVERTRAVEL----- | .050 MIN |
| FREE POSITION----- | .625 MAX |
| RELEASE TRAVEL----- | .010 MIN |

| ELECTRICAL DATA | |
|---|--|
| CONTACT ARRANGEMENT S P D T | |
| L163 3A 125, 250, 277 VAC 1/10HP 250 VAC | |
| | |

| UNLESS OTHERWISE SPECIFIED TOLERANCES ARE: | | | |
|--|---|---|-------|
| | <input checked="" type="checkbox"/> US (inch) CUSTOMARY | <input type="checkbox"/> SI (mm) METRIC | |
| NO PLACE | X | ±.040 | ±1 |
| ONE PLACE | .X | ±.030 | ±0,4 |
| TWO PLACE | .XX | ±.015 | ±0,15 |
| THREE PLACE | .XXX | ±.005 | ± |
| ANGLES | | ± | ± |
| RAW MATERIAL-COMMERCIAL STANDARD | | | |
| THIRD ANGLE PROJECTION | | | |
| | | | |

| | | |
|--|------------------|---------|
| DRAWN | CSL | 12DEC03 |
| CHECK | MDM | 12DEC03 |
| THIS DRAWING COVERS A PROPRIETARY ITEM AND IS THE PROPERTY OF HONEYWELL. THIS DRAWING IS NOT TO BE COPIED OR USED WITHOUT THE PERMISSION OF HONEYWELL. | | |
| DIMENSIONS ARE TO BE MET BEFORE PROTECTIVE COATINGS ARE APPLIED | | |
| PTC 2D | ASME Y14.5M-1994 | |

| | | | |
|-------------------------------|----------|------------------------|--------------|
| Honeywell | | | |
| TITLE SWITCH, BASIC | | | |
| SIZE | DWG TYPE | DRAWING NAME | REV |
| B | I | V7-5F17E9-000-3 | A |
| SCALE | 2:1 | WEIGHT | SHEET 1 OF 1 |