

**MICRO SWITCH**  
a Honeywell Division

FED. MFG. CODE 91929

SWITCH - BASIC

CATALOG LISTING

V7-4A17D8-407

CW-C4007

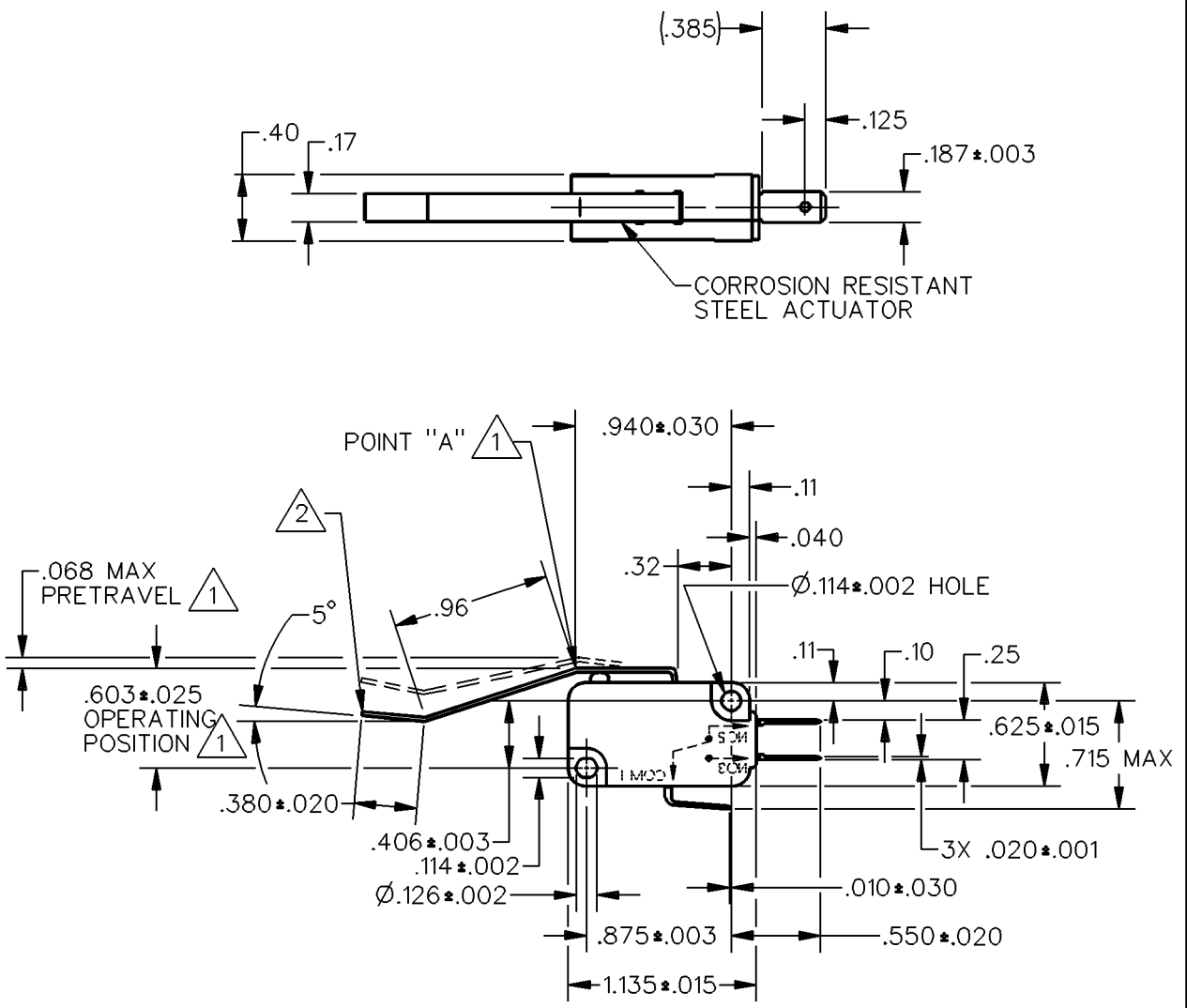
CATALOG LISTING  
V7-4A17D8-407

REPLACES X95640-V7  
RELEASE NO. PR-20157

ISSUE  
**M**

3

REVISIONS	REL DWG	PR-20157
A	JWB	30 JUN 92
B	CO 76420	DCS 29 NOV 93



NOTES  
 1 CHARACTERISTICS MEASURED AT POINT "A"  
 2 FORCE CHARACTERISTICS AT END OF LEVER

ANSI Y14.5M-1982 APPLIES

THIS DRAWING COVERS A PROPRIETARY ITEM AND IS THE PROPERTY OF MICRO SWITCH, A DIVISION OF HONEYWELL. THIS DRAWING IS NOT TO BE COPIED OR USED WITHOUT THE APPROVAL OF MICRO SWITCH.

THIRD ANGLE PROJECTION

CHARACTERISTICS	
OPERATING FORCE	10 GRAMS MAX
RELEASE FORCE	1/2 GRAM MIN
DIFFERENTIAL TRAVEL	.015 MAX
OVERTRAVEL	.040 MIN
RELEASE TRAVEL	.010 MIN

ELECTRICAL DATA
CONTACT ARRANGEMENT S P D T
5A 125, 250, 277 VAC L162 1/10 HP 250 VAC

SCALE	FULL	DO NOT SCALE PRINT
<b>UNLESS OTHERWISE SPECIFIED TOLERANCES ARE</b>		
ONE PLACE	(.0)	±.030
TWO PLACE	(.00)	±.015
THREE PLACE	(.000)	±.005
ANGLES		± 3°
WEIGHT		



DDM/CAD  
DRAWN  
JWB 30 JUN 92

CHECK WJC 6 JUL 92  
CHECK