

MICRO SWITCH
a Honeywell Division

FED. MFG. CODE 91 929

SWITCH-BASIC

CATALOG LISTING

V7-3A18D8

CW-B4012

REPLACES X90979-V7

RELEASE NO. PR-17892

CATALOG LISTING
V7-3A18D8
PAGE 1 OF 1

ISSUE
M
8

CHECK

10 JAN 06

RJ

CHECK

7 AUG 89

7 AUG 89

DCS

CHECK

28 JUL 89

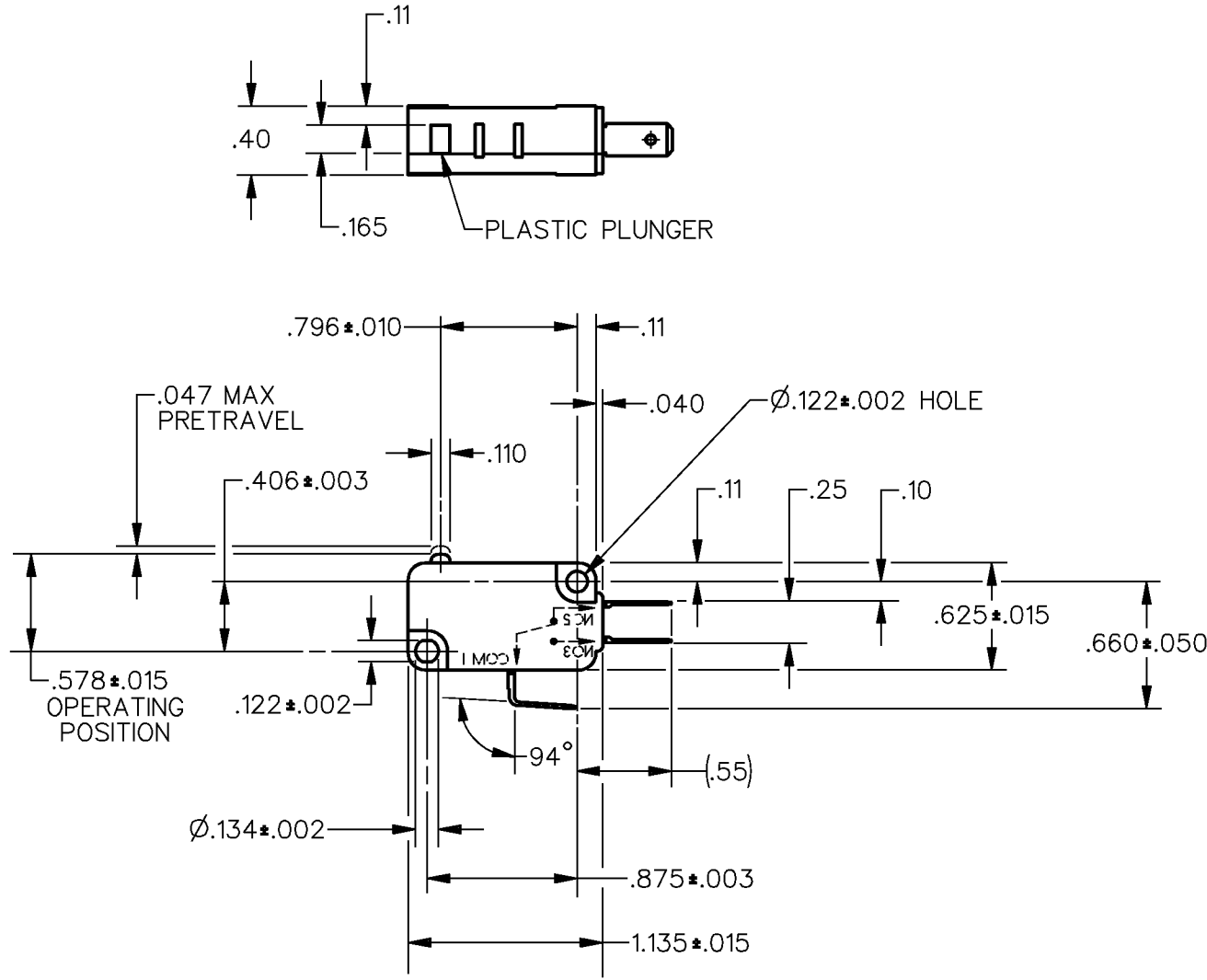
DCS

CHECK

28 JUL 89

DCS

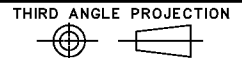
CHECK



NOTE
1 - METRIC MOUNTING HOLES

ANSI Y14.5M-1982 APPLIES

THIS DRAWING COVERS A PROPRIETARY ITEM AND IS THE PROPERTY OF MICRO SWITCH, A DIVISION OF HONEYWELL. THIS DRAWING IS NOT TO BE COPIED OR USED WITHOUT THE APPROVAL OF MICRO SWITCH.



CHARACTERISTICS	ELECTRICAL DATA	SCALE	FULL	DO NOT SCALE PRINT
		UNLESS OTHERWISE SPECIFIED TOLERANCES ARE		
OPERATING FORCE ---60 GRAMS MAX	CONTACT ARRANGEMENT S P D T	ONE PLACE	(.0)	±.030
RELEASE FORCE ---11 GRAMS MIN		TWO PLACE	(.00)	±.015
OVERTRAVEL ---.050 MIN	L162 5A 125, 250, 277 VAC 1/10 HP 250 VAC	THREE PLACE	(.000)	±.005
DIFFERENTIAL TRAVEL ---.002-.010		ANGLES		± 3°
FREE POSITION ---.625 MAX		WEIGHT		
RELEASE TRAVEL ---.007 MIN				

DDM/CAD
DRAWN

W J M 28 JUL 89

DCS