

MICRO SWITCH
a Honeywell Division

FED. MFG. CODE 91929

SWITCH-BASIC

CATALOG LISTING
V7-2S17E9-420

CW-B8704

CATALOG LISTING
V7-2S17E9-420
PAGE 1 OF 1

M

ISSUE
3

REPLACES

RELEASE NO. PR-21459

CHECK

REVISIONS

A	REL PR21459
	DCS
	19 DEC 94
B	CO-933II
	TSM
	26 OCT 98

CHECK

19 DEC 94

DCS

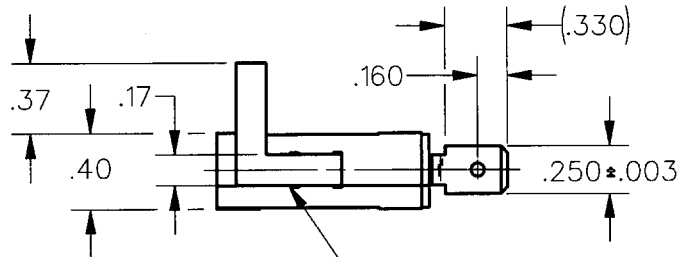
CHECK

2 AUG 94

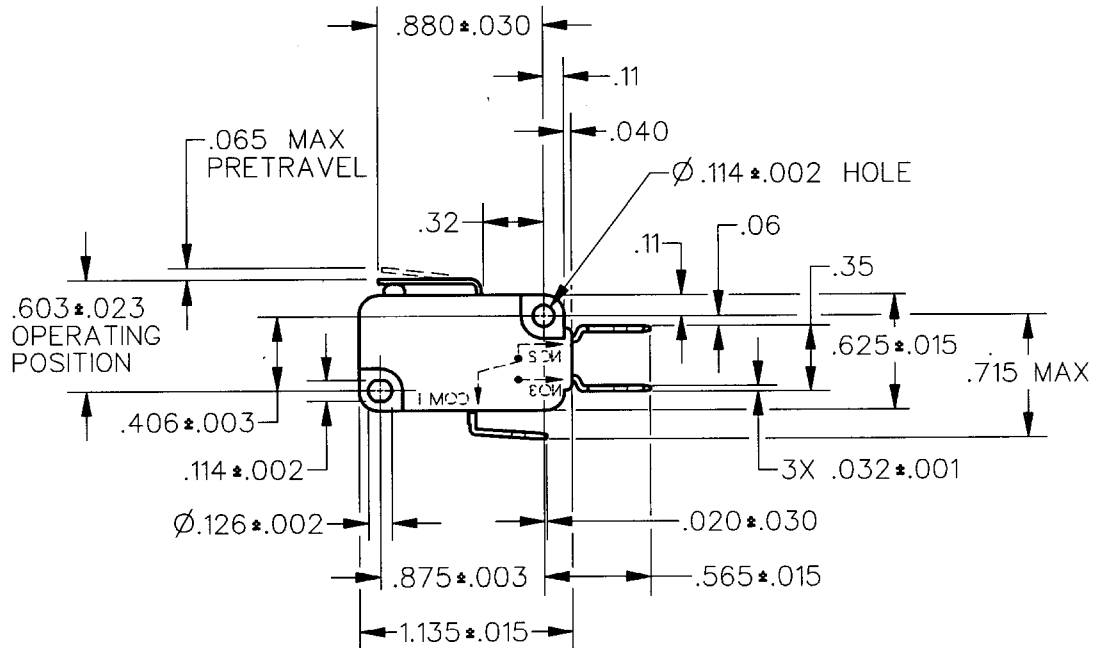
DCS

FORMTEK

DRAWN



CORROSION RESISTANT
STEEL ACTUATOR

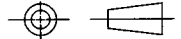


NOTES
1 - IN INSPECTION, DO NOT BURN OUT - GOLD CONTACTS
2 - IN INSPECTION, DO NOT EXCEED 10 VDC, .1A RESISTIVE LOAD

ANSI Y14.5M-1982 APPLIES

THIS DRAWING COVERS A PROPRIETARY ITEM AND IS THE PROPERTY OF MICRO SWITCH, A DIVISION OF HONEYWELL. THIS DRAWING IS NOT TO BE COPIED OR USED WITHOUT THE APPROVAL OF MICRO SWITCH.

THIRD ANGLE PROJECTION



CHARACTERISTICS	ELECTRICAL DATA	SCALE FULL	DO NOT SCALE PRINT
OPERATING FORCE --- 77 GRAMS MAX	CONTACT ARRANGEMENT S P D T	UNLESS OTHERWISE SPECIFIED TOLERANCES ARE	
RELEASE FORCE --- 6 GRAMS MIN	L142 0.1A 125 VAC		
DIFFERENTIAL TRAVEL --- .015 MAX		TWO PLACE (.00) ±.015	
OVERTRAVEL --- .038 MIN		THREE PLACE (.000) ±.005	
RELEASE TRAVEL --- .009 MIN		ANGLES	±
		WEIGHT	

