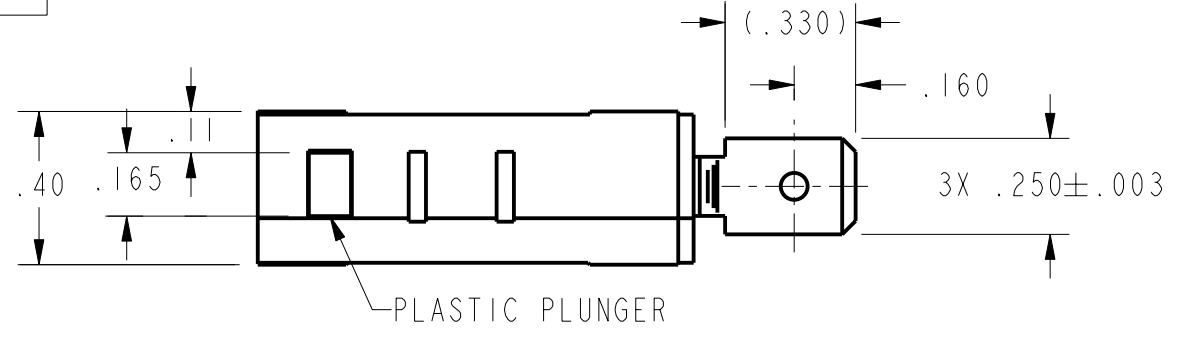
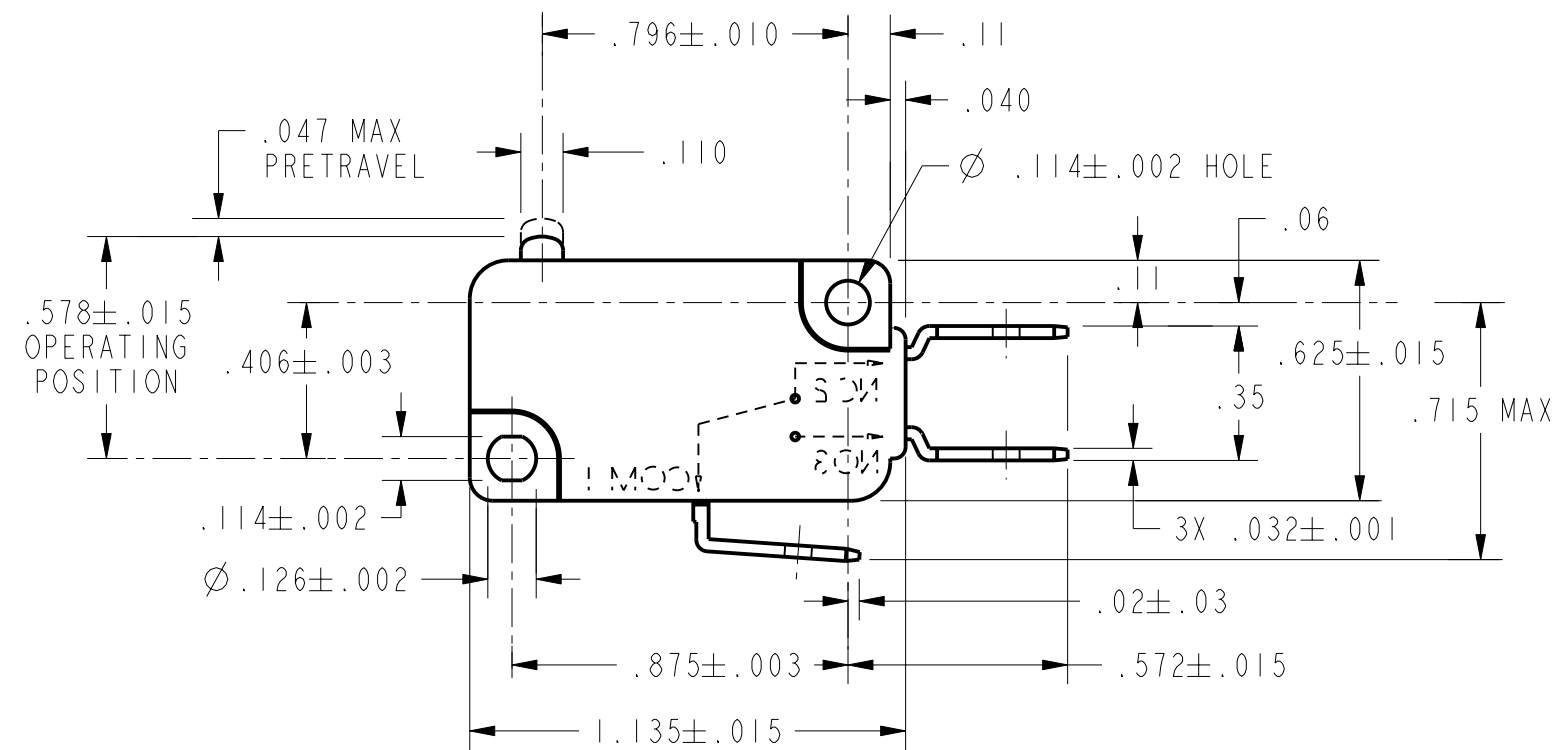


CW-B9727

REV	DOCUMENT	CHANGED BY	CHECK
3	203276	TSM 15JUN01	SAV



NOTES  
 1 - MAXIMUM MECHANICAL DEAD BREAK OF .0025 MAY BE EXPECTED WITH THIS SWITCH CONSTRUCTION  
 2 - SILVER PLATED TERMINALS REQUIRED  
 3 - RESTRICTED LISTING



CHARACTERISTICS	
OPERATING FORCE-----	90-190 GRAMS
RELEASE FORCE-----	20 GRAMS MIN
DIFFERENTIAL TRAVEL-----	.010 MAX
OVERTRAVEL-----	.050 MIN
FREE POSITION-----	.625 MAX
RELEASE TRAVEL-----	.010 MIN

ELECTRICAL DATA	
CONTACT ARRANGEMENT S P D T	
25A, 277 VAC 1HP, 125 VAC 2HP, 250 VAC	

UNLESS OTHERWISE SPECIFIED TOLERANCES ARE:			
	<input checked="" type="checkbox"/> US (inch) CUSTOMARY	<input type="checkbox"/> SI (mm) METRIC	
NO PLACE	X	±.040	±1
ONE PLACE	.X	±.030	±0,4
TWO PLACE	.XX	±.015	±0,15
THREE PLACE	.XXX	±.005	±
ANGLES		±	±
RAW MATERIAL-COMMERCIAL STANDARD			
THIRD ANGLE PROJECTION			

DRAWN	TSM	15JUN01
CHECK	SAV	15JUN01
THIS DRAWING COVERS A PROPRIETARY ITEM AND IS THE PROPERTY OF HONEYWELL SENSING AND CONTROL. THIS DRAWING IS NOT TO BE COPIED OR USED WITHOUT THE PERMISSION OF HONEYWELL.		
DIMENSIONS ARE TO BE MET BEFORE PROTECTIVE COATINGS ARE APPLIED		
PTC 2D	ASME Y14.5M-1994	

<b>Honeywell</b> Sensing and Control			
TITLE <b>SWITCH, BASIC</b>			
SIZE	DWG TYPE	DRAWING NAME	REV
<b>B</b>	<b>I</b>	<b>V7-1Z19E9-000-2</b>	<b>3</b>
SCALE 2 : 1		WEIGHT	SHEET 1 OF 1

