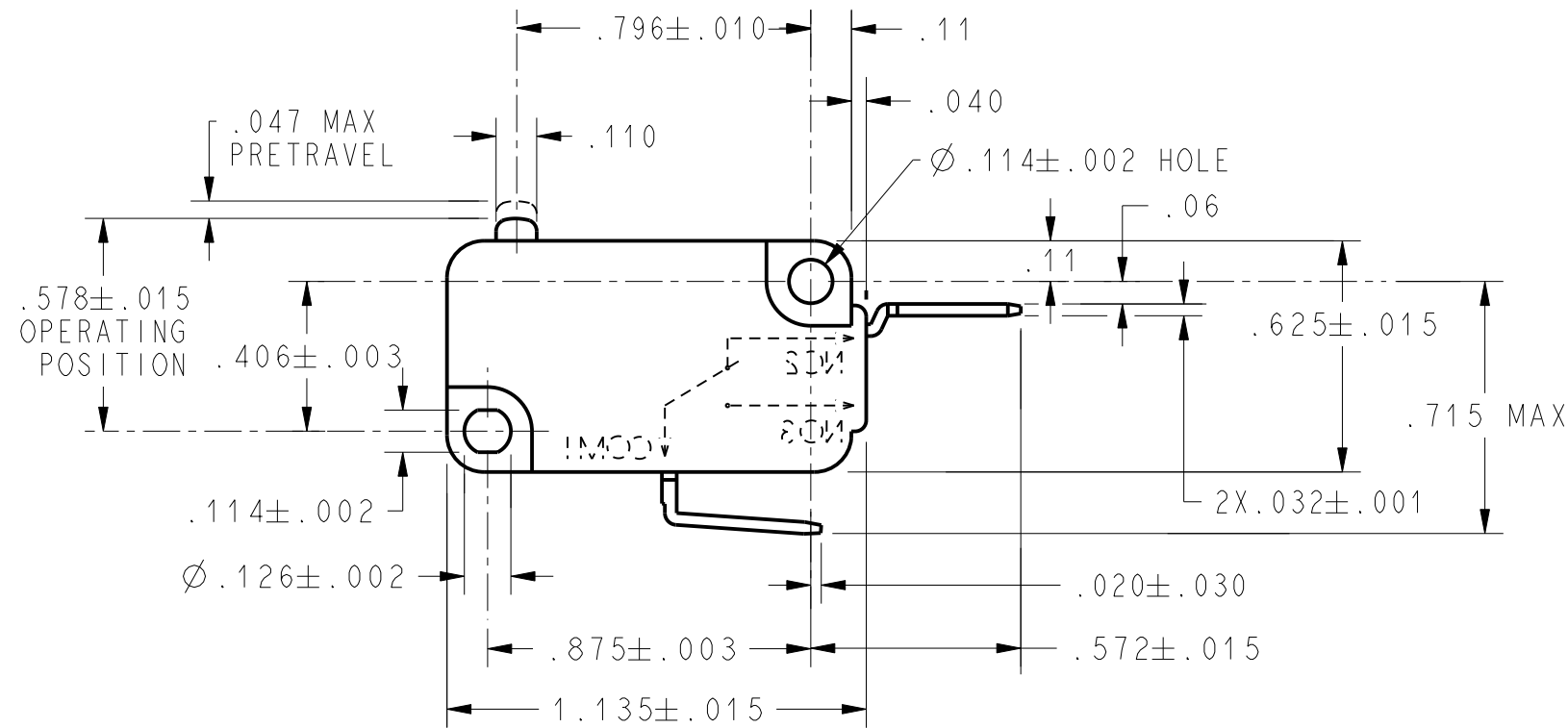
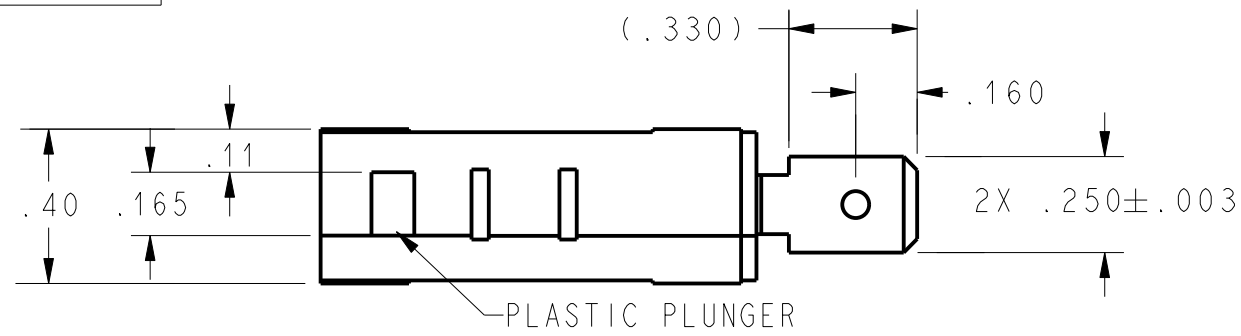


REV	DOCUMENT	CHANGED BY	CHECK
2	0001443	CSL 10SEP03	SAV



NOTES  
 1 - MAXIMUM MECHANICAL DEAD BREAK OF .0025 MAY BE EXPECTED WITH THIS SWITCH CONSTRUCTION

CHARACTERISTICS	
OPERATING FORCE	65-125 GRAMS
RELEASE FORCE	20 GRAMS MIN
DIFFERENTIAL TRAVEL	.010 MAX
OVERTRAVEL	.050 MIN
FREE POSITION	.625 MAX
RELEASE TRAVEL	.010 MIN

ELECTRICAL DATA	
CONTACT ARRANGEMENT S P N C	
20A, 277 VAC	
1HP, 125 VAC	
2HP, 250 VAC	

UNLESS OTHERWISE SPECIFIED TOLERANCES ARE:			
	<input checked="" type="checkbox"/> US (inch) CUSTOMARY	<input type="checkbox"/> SI (mm) METRIC	
NO PLACE	X	±.040	±1
ONE PLACE	.X	±.030	±0,4
TWO PLACE	.XX	±.015	±0,15
THREE PLACE	.XXX	±.005	±
ANGLES		±	±
RAW MATERIAL-COMMERCIAL STANDARD			
THIRD ANGLE PROJECTION			

DRAWN	TSM	4 MAR 03
CHECK	SAV	4 MAR 03
THIS DRAWING COVERS A PROPRIETARY ITEM AND IS THE PROPERTY OF HONEYWELL. THIS DRAWING IS NOT TO BE COPIED OR USED WITHOUT THE PERMISSION OF HONEYWELL.		
PTC 2D	ASME Y14.5M-1994	

<b>Honeywell</b>			
TITLE <b>SWITCH, BASIC</b>			
SIZE	DWG TYPE	DRAWING NAME	REV
<b>B</b>	<b>I</b>	<b>V7-1Y39E9</b>	<b>2</b>
SCALE	2:1	WEIGHT	SHEET 1 OF 1