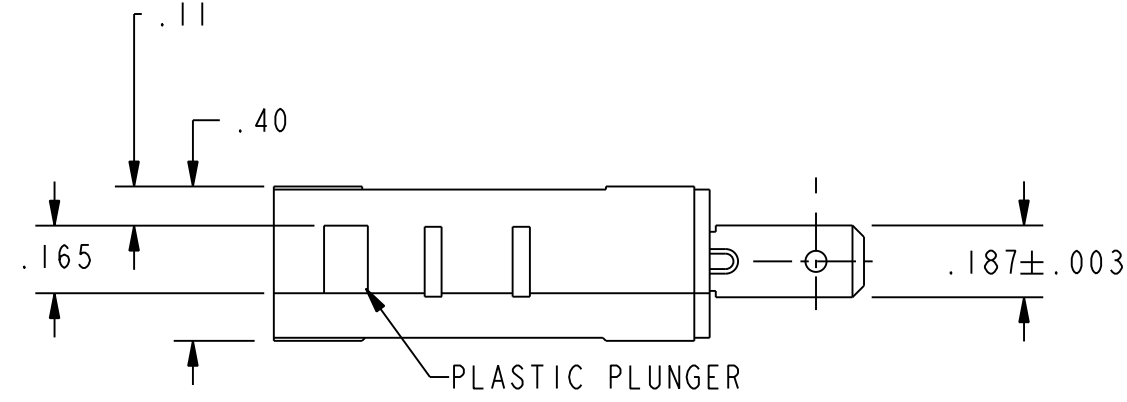
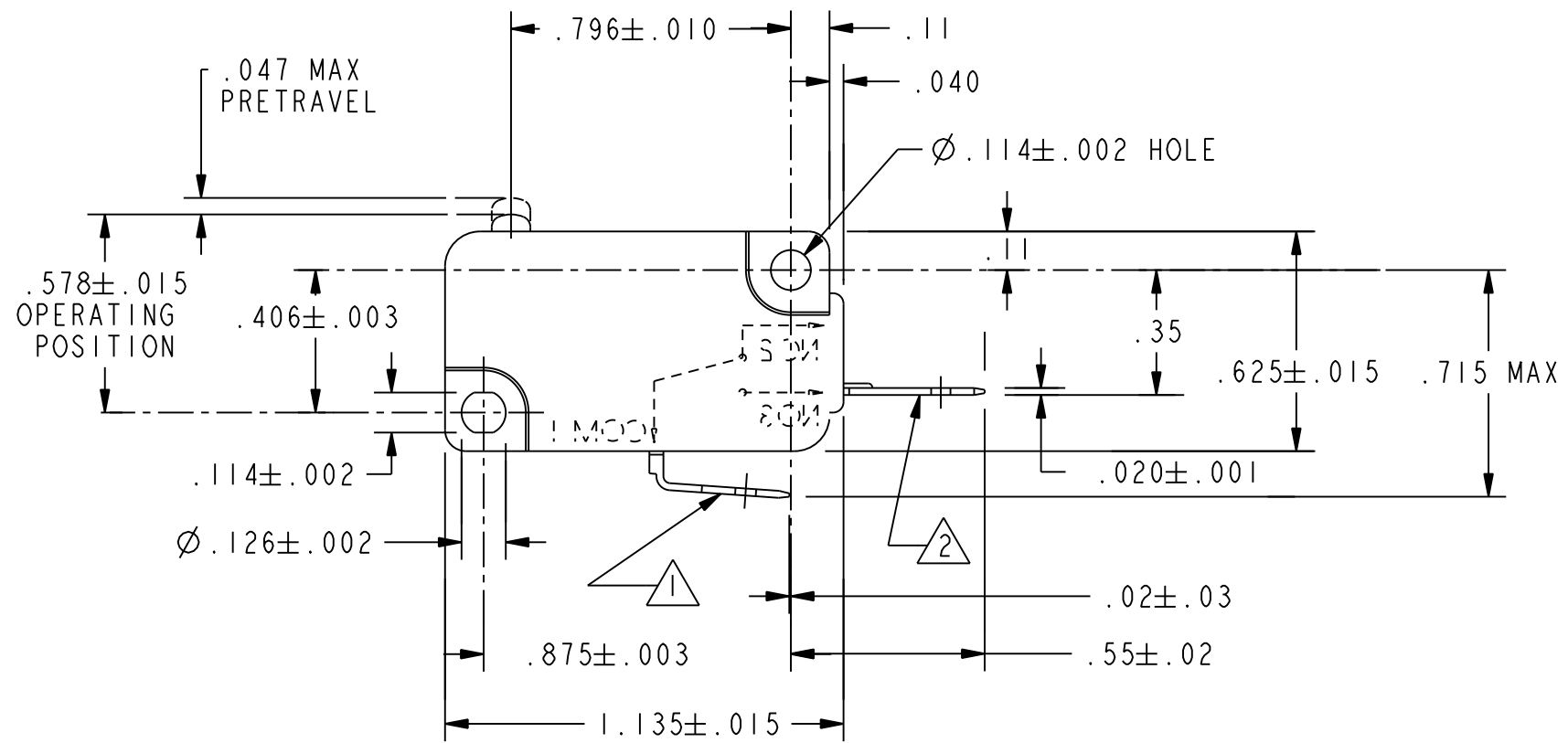


REV	DOCUMENT	CHANGED BY	CHECK
6	0013134	NM 13MAY05	AK



NOTES

- 1 COMMON TERMINAL .250±.001 X .032±.001
- 2 NO TERMINAL IS D8 STYLE
- 3 - SILVER PLATED TERMINALS
- 4 - TESTED TO SHOW COMPLIANCE WITH UL 858 OVEN LATCH REQUIREMENTS UNDER THE FOLLOWING PARAMETERS: ELECTRICAL ENDURANCE FOR 100K OPERATIONS AT 200°C FOR 250 HOURS MINIMUM WHILE CONTROLLING AN INDUCTIVE LOAD OF 6A, 277VAC



CHARACTERISTICS	
OPERATING FORCE-----	115 GRAM MAX
RELEASE FORCE-----	15 GRAMS MIN
DIFFERENTIAL TRAVEL-----	.010 MAX
OVERTRAVEL-----	.050 MIN
RELEASE TRAVEL-----	.010 MIN

ELECTRICAL DATA	
CONTACT ARRANGEMENT S P N O	
L278 6A, 1/8HP 125, 250 OR 277 VAC	

UNLESS OTHERWISE SPECIFIED TOLERANCES ARE:			
	<input checked="" type="checkbox"/> US (inch) CUSTOMARY	<input type="checkbox"/> SI (mm) METRIC	
NO PLACE	X	±.040	±1
ONE PLACE	.X	±.030	±0,4
TWO PLACE	.XX	±.015	±0,15
THREE PLACE	.XXX	±.005	±
ANGLES		±	±
RAW MATERIAL-COMMERCIAL STANDARD			
THIRD ANGLE PROJECTION			

DRAWN	GJW	21FEB01
CHECK	SAV	21FEB01
THIS DRAWING COVERS A PROPRIETARY ITEM AND IS THE PROPERTY OF HONEYWELL. THIS DRAWING IS NOT TO BE COPIED OR USED WITHOUT THE PERMISSION OF HONEYWELL.		
DIMENSIONS ARE TO BE MET BEFORE PROTECTIVE COATINGS ARE APPLIED		
PTC 2D	ASME Y14.5M-1994	

Honeywell			
TITLE SWITCH, BASIC			
SIZE	DWG TYPE	DRAWING NAME	REV
B	I	V7-1X2AD9C2	6
SCALE	NONE	WEIGHT	SHEET 1 OF 1