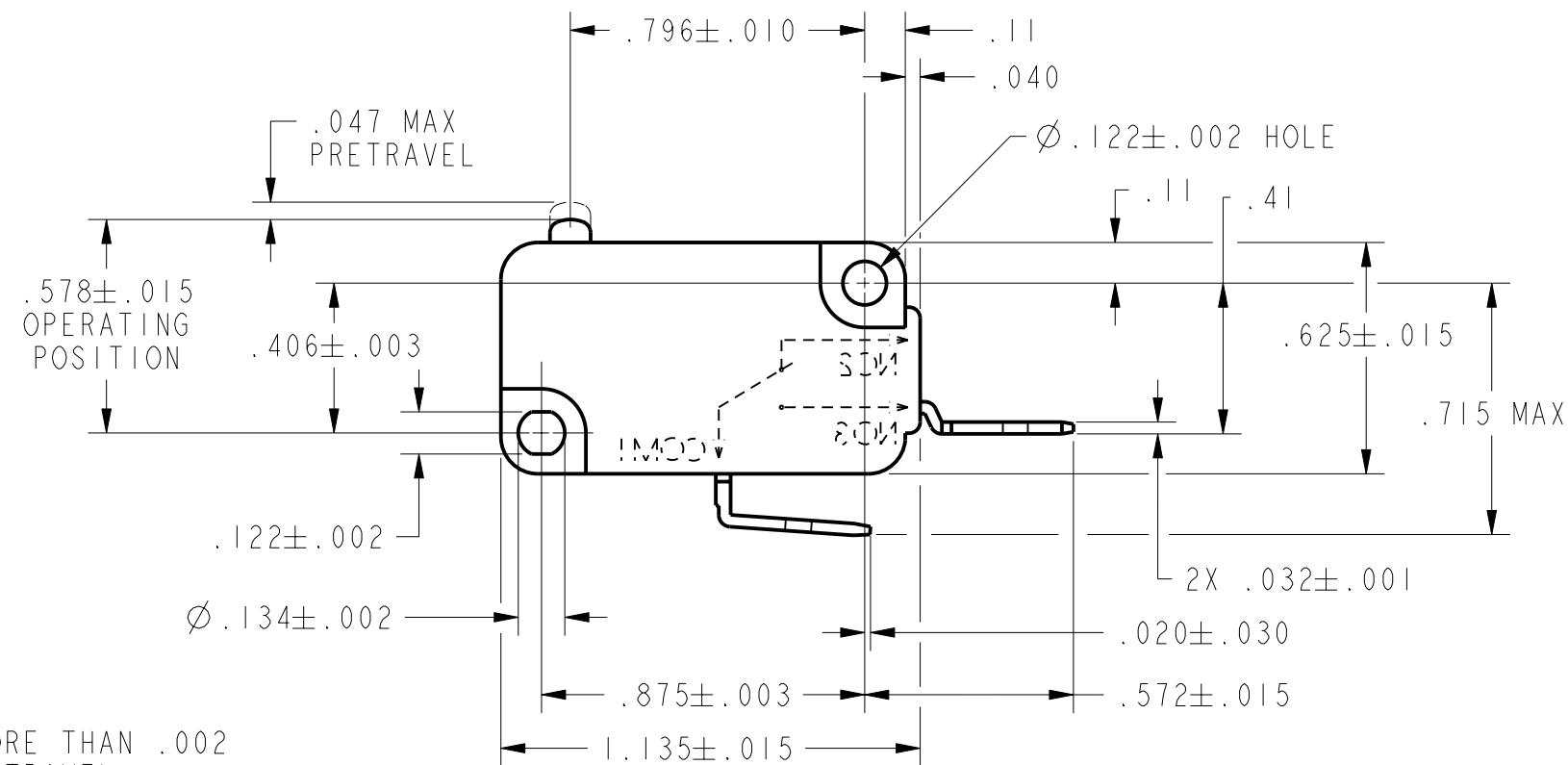
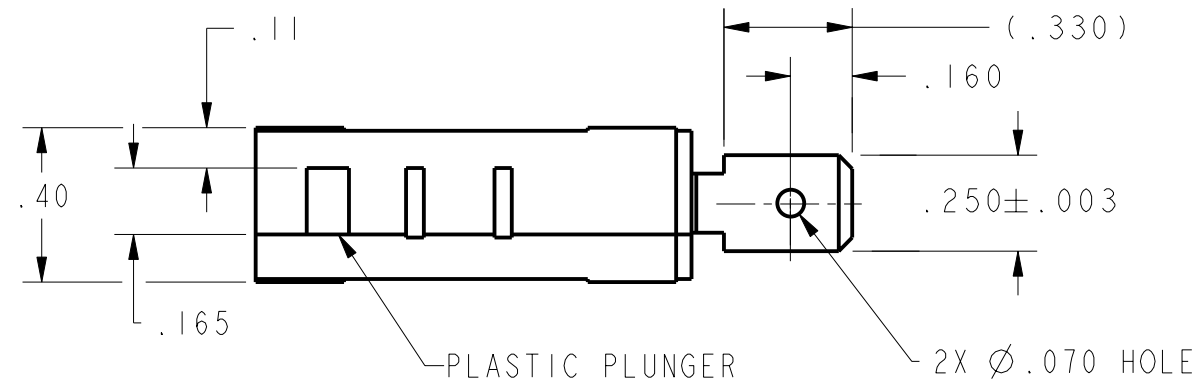


REV	DOCUMENT	CHANGED BY	CHECK
6	202161	DLT 18JAN01	SAV
7	207439	TSM 13FEB03	SAV



NOTE
1 - PLUNGER MUST NOT PROTRUDE MORE THAN .002 ABOVE CASE WHEN AT FULL OVERTRAVEL

CHARACTERISTICS		ELECTRICAL DATA		UNLESS OTHERWISE SPECIFIED TOLERANCES ARE:		DRAWN	DLT	18JAN01	Honeywell		
OPERATING FORCE-----160 GRAMS MAX		CONTACT ARRANGEMENT S P N O		NO PLACE X ±.040 ±1		CHECK	SAV	18JAN01			
RELEASE FORCE-----20 GRAMS MIN		21A 1HP 125, 250, 277 VAC		ONE PLACE .X ±.030 ±0,4		THIS DRAWING COVERS A PROPRIETARY ITEM AND IS THE PROPERTY OF HONEYWELL. THIS DRAWING IS NOT TO BE COPIED OR USED WITHOUT THE PERMISSION OF HONEYWELL.			SIZE DWG TYPE DRAWING NAME REV B I V7-1V20E9-000-1 7		
DIFFERENTIAL TRAVEL-----:002-.010		2HP 250, 277 VAC		TWO PLACE .XX ±.015 ±0,15							
OVERTRAVEL-----:050 MIN				THIRD ANGLE PROJECTION		PTC 2D ASME Y14.5M-1994					
FREE POSITION ----- .625 MAX											
RELEASE TRAVEL-----:010 MIN											