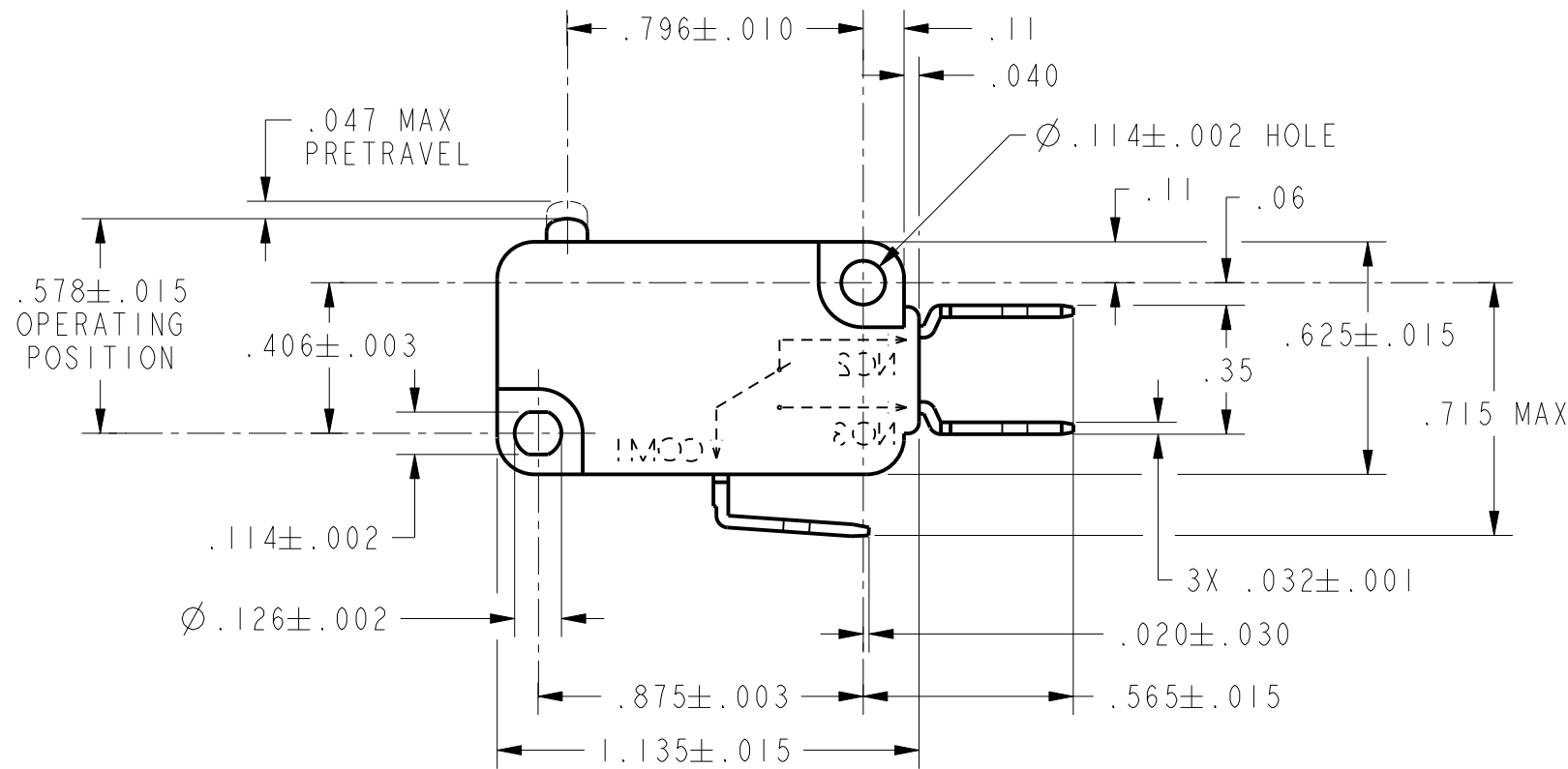
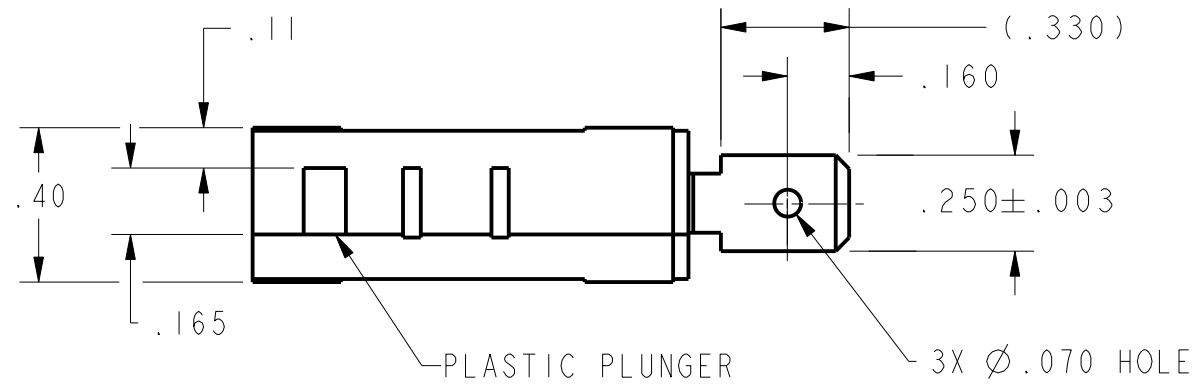


REV	DOCUMENT	CHANGED BY	CHECK
B	0035681	BS 30NOV07	ASD



NOTES

- 1 - CUSTOMER PART NO. AIM0-1A17-1 BRANDED ON SWITCH
- 2 - RESTRICTED LISTING

CHARACTERISTICS	
OPERATING FORCE-----	160 GRAMS MAX
RELEASE FORCE-----	20 GRAMS MIN
DIFFERENTIAL TRAVEL-----	.002-.010
OVERTRAVEL-----	.050 MIN
FREE POSITION-----	.625 MAX
RELEASE TRAVEL-----	.010 MIN

ELECTRICAL DATA	
CONTACT ARRANGEMENT S P D T	
21A 1HP 125, 250, 277 VAC 2HP 250, 277 VAC	

UNLESS OTHERWISE SPECIFIED TOLERANCES ARE:			
	<input checked="" type="checkbox"/> US (inch) CUSTOMARY	<input type="checkbox"/> SI (mm) METRIC	
NO PLACE	X	±.040	±1
ONE PLACE	.X	±.030	±0,4
TWO PLACE	.XX	±.015	±0,15
THREE PLACE	.XXX	±.005	±
ANGLES		±	±
RAW MATERIAL-COMMERCIAL STANDARD			
THIRD ANGLE PROJECTION			

DRAWN	CSL	BS
CHECK	SAV	BS
THIS DRAWING COVERS A PROPRIETARY ITEM AND IS THE PROPERTY OF HONEYWELL. THIS DRAWING IS NOT TO BE COPIED OR USED WITHOUT THE PERMISSION OF HONEYWELL.		
SIZE	DWG TYPE	DRAWING NAME
B	I	V7-1V19E9-000-4
DIMENSIONS ARE TO BE MET BEFORE PROTECTIVE COATINGS ARE APPLIED		
PTC 2D	ASME Y14.5M-1994	

<b>Honeywell</b>			
TITLE <b>SWITCH, BASIC</b>			
SIZE	DWG TYPE	DRAWING NAME	REV
B	I	V7-1V19E9-000-4	B
SCALE	2:1	WEIGHT	SHEET 1 OF 1