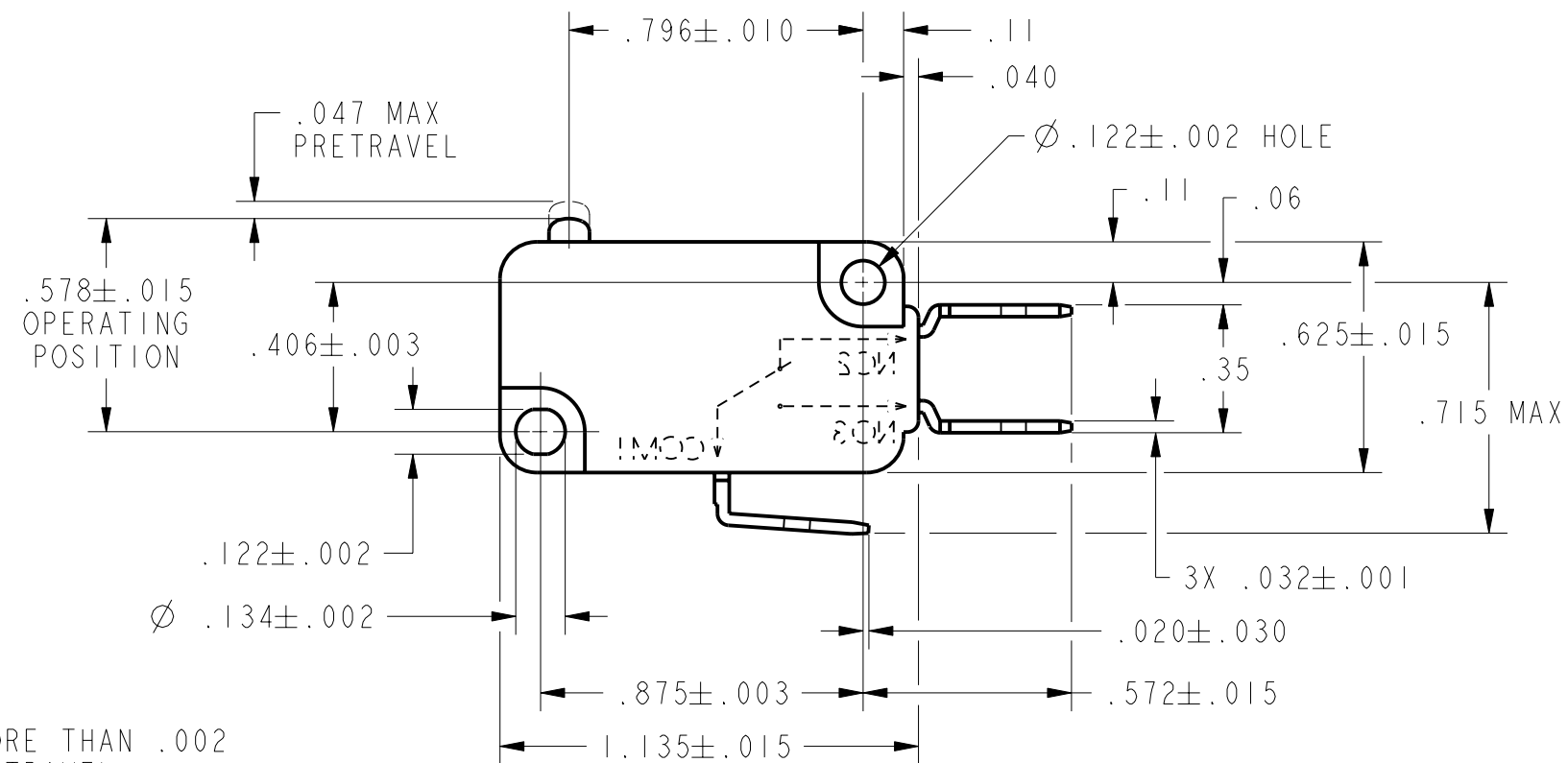
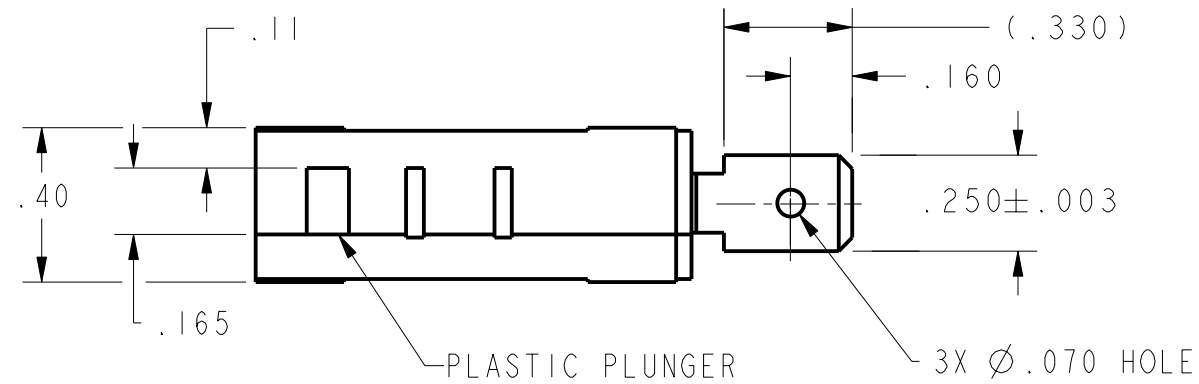


REV	DOCUMENT	CHANGED BY	CHECK
6	202161	DLT 18JAN01	SAV
7	207439	TSM 13FEB03	SAV



NOTE
1 - PLUNGER MUST NOT PROTRUDE MORE THAN .002 ABOVE CASE WHEN AT FULL OVERTRAVEL

CHARACTERISTICS		ELECTRICAL DATA		UNLESS OTHERWISE SPECIFIED TOLERANCES ARE:		DRAWN	DLT	18JAN01	Honeywell				
OPERATING FORCE-----160 GRAMS MAX		CONTACT ARRANGEMENT S P D T		NO PLACE	X $\pm .040$ ± 1	CHECK	SAV	18JAN01				TITLE SWITCH, BASIC	
RELEASE FORCE-----20 GRAMS MIN		21A 1HP 125, 250, 277 VAC 2HP 250, 277 VAC		ONE PLACE	.X $\pm .030$ $\pm 0,4$	THIS DRAWING COVERS A PROPRIETARY ITEM AND IS THE PROPERTY OF HONEYWELL. THIS DRAWING IS NOT TO BE COPIED OR USED WITHOUT THE PERMISSION OF HONEYWELL.			SIZE	DWG TYPE	DRAWING NAME		
DIFFERENTIAL TRAVEL-----:002-.010				TWO PLACE	.XX $\pm .015$ $\pm 0,15$				B	I	V7-1V10E9-000-1	7	
OVERTRAVEL-----:050 MIN						THREE PLACE	.XXX $\pm .005$ \pm	DIMENSIONS ARE TO BE MET BEFORE PROTECTIVE COATINGS ARE APPLIED			SCALE	2:1	WEIGHT
FREE POSITION ----- .625 MAX				ANGLES	\pm \pm	PTC 2D			ASME Y14.5M-1994				
RELEASE TRAVEL-----:010 MIN				RAW MATERIAL-COMMERCIAL STANDARD									
				THIRD ANGLE PROJECTION									