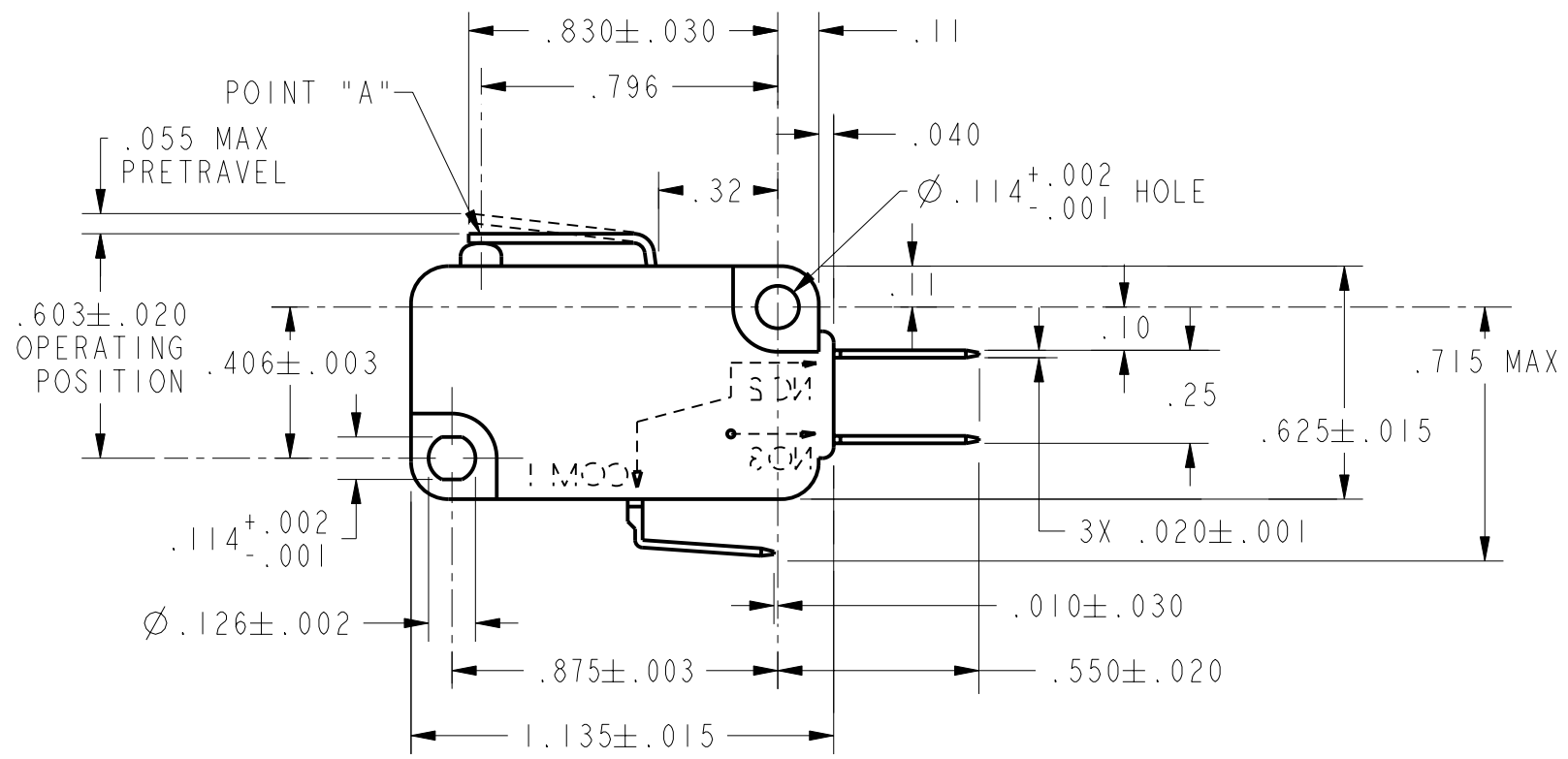
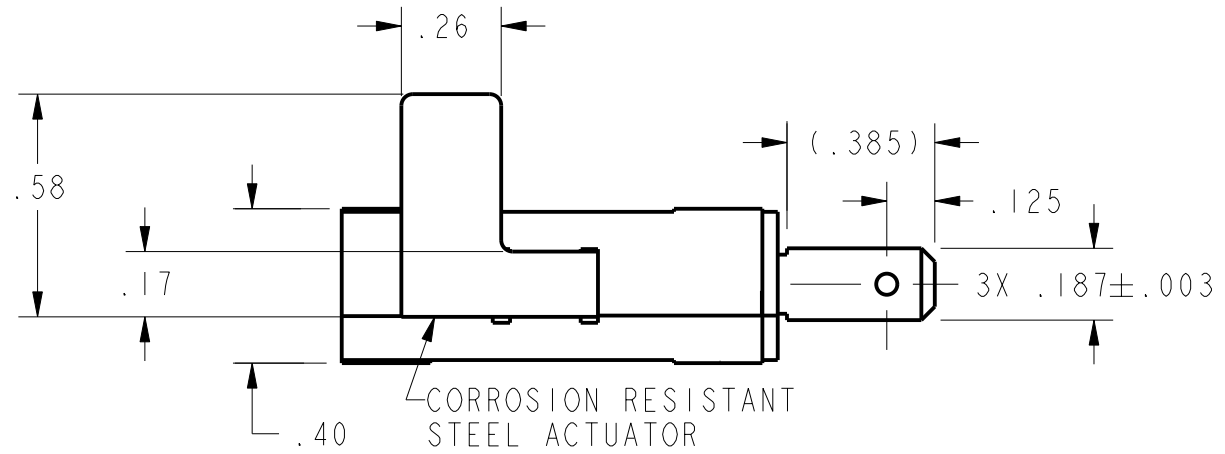


REV	DOCUMENT	CHANGED BY	CHECK
1	204157	TSM 15OCT01	SAV
2	204371	TSM 12NOV01	SAV



NOTE
1 - CHARACTERISTICS MEASURED AT POINT "A"

CHARACTERISTICS	
OPERATING FORCE	-----181 GRAMS MAX
RELEASE FORCE	----- 20 GRAMS MIN
DIFFERENTIAL TRAVEL	----- .012 MAX
OVERTRAVEL	----- .032 MIN
RELEASE TRAVEL	----- .007 MIN

ELECTRICAL DATA	
CONTACT ARRANGEMENT S P D T	
L216	
10A 1/3HP 125, 250 OR 277 VAC	
1/2A 125 VDC	
1/4A 250 VDC; 4A 125 VAC "L"	

UNLESS OTHERWISE SPECIFIED TOLERANCES ARE:			
	<input checked="" type="checkbox"/> US (inch) CUSTOMARY	<input type="checkbox"/> SI (mm) METRIC	
NO PLACE	X	±.040	±1
ONE PLACE	.X	±.030	±0,4
TWO PLACE	.XX	±.015	±0,15
THREE PLACE	.XXX	±.005	±
ANGLES		± 3°	±
RAW MATERIAL-COMMERCIAL STANDARD			
THIRD ANGLE PROJECTION			

DRAWN	TSM	15OCT01
CHECK	SAV	15OCT01
THIS DRAWING COVERS A PROPRIETARY ITEM AND IS THE PROPERTY OF HONEYWELL SENSING AND CONTROL. THIS DRAWING IS NOT TO BE COPIED OR USED WITHOUT THE PERMISSION OF HONEYWELL.		
DIMENSIONS ARE TO BE MET BEFORE PROTECTIVE COATINGS ARE APPLIED		
PTC 2D	ASME Y14.5M-1994	

Honeywell			
Sensing and Control			
TITLE SWITCH, BASIC			
SIZE	DWG TYPE	DRAWING NAME	REV
B	I	V7-1E17D8-366	2
SCALE	2:1	WEIGHT	SHEET 1 OF 1

