

Honeywell

FED. MFG. CODE 91 929

SWITCH - BASIC

CATALOG LISTING

V7-1C37D8-000-1

CW-B1779

CATALOG LISTING
V7-1C37D8-000-1

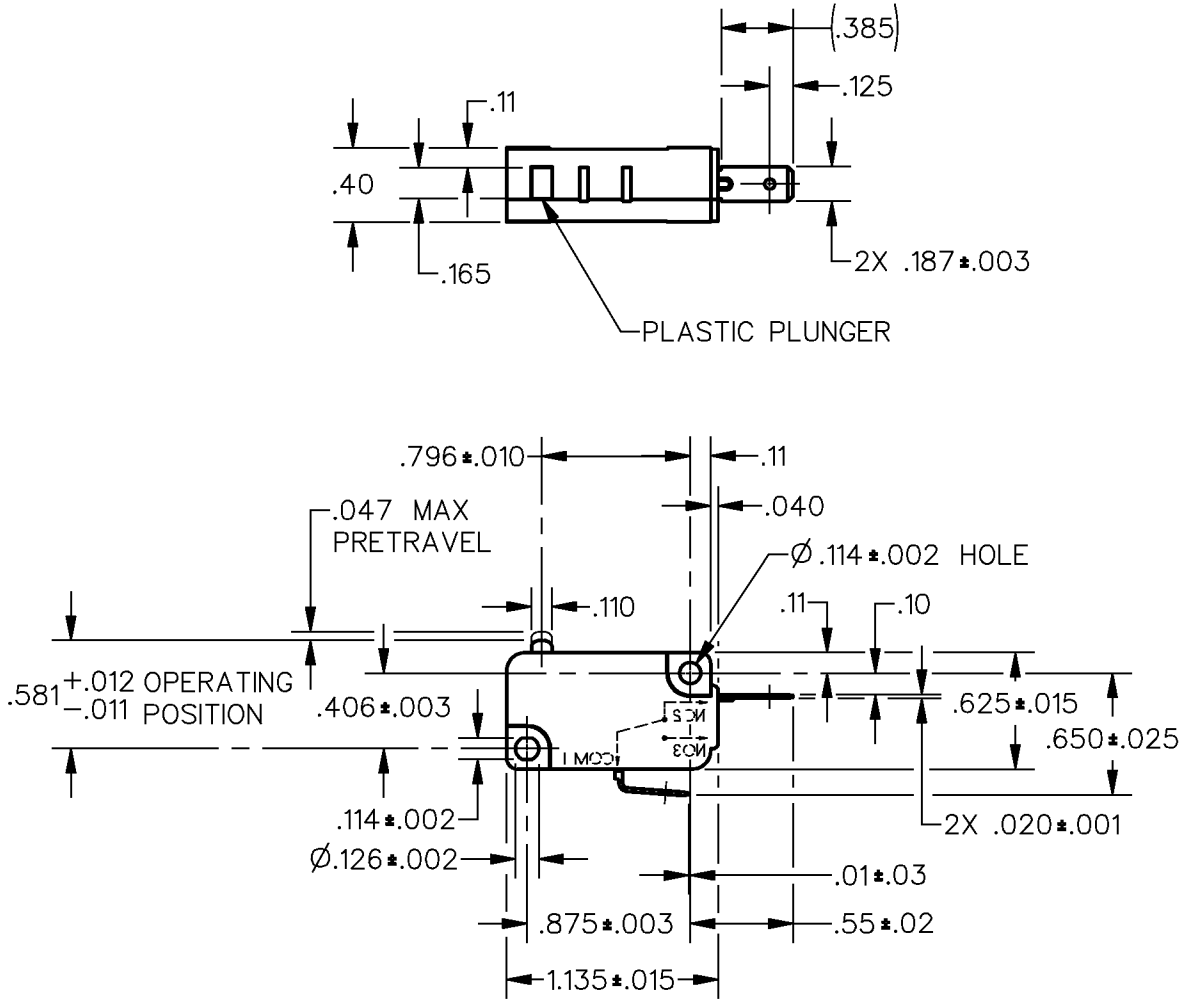
ISSUE
M

3

REVISIONS	
A	CO-94990 JJA 13 APR 99
B	0041170 JA 03JUL08

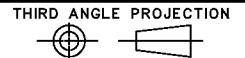
RASTER
DRAWN

X110702-V7
REPLACES PR-23723
RELEASE NO. 1 OF 1
CHECK 03JUL08 ASD CHECK 30 OCT 98 JAF CHECK 30 OCT 98 TSM



ANSI Y14.5M-1982 APPLIES

THIS DRAWING COVERS A PROPRIETARY ITEM AND IS THE PROPERTY OF HONEYWELL. THIS DRAWING IS NOT TO BE COPIED OR USED WITHOUT THE APPROVAL OF HONEYWELL.



CHARACTERISTICS	ELECTRICAL DATA	SCALE FULL	DO NOT SCALE PRINT
		UNLESS OTHERWISE SPECIFIED TOLERANCES ARE	
OPERATING FORCE ---150 GRAMS MAX	CONTACT ARRANGEMENT S P N C L215 15.1A 1/2HP 125, 250 OR 277 VAC 1/2A 125 VDC 1/4A 250 VDC; 5A 125 VAC "L"	ONE PLACE (.0)	±.030
RELEASE FORCE ---25 GRAMS MIN		TWO PLACE (.00)	±.015
DIFFERENTIAL TRAVEL ---.002-.010		THREE PLACE (.000)	±.005
OVERTRAVEL ---.050 MIN		ANGLES	±
FREE POSITION ---.625 MAX		WEIGHT	
RELEASE TRAVEL ---.010 MIN			

