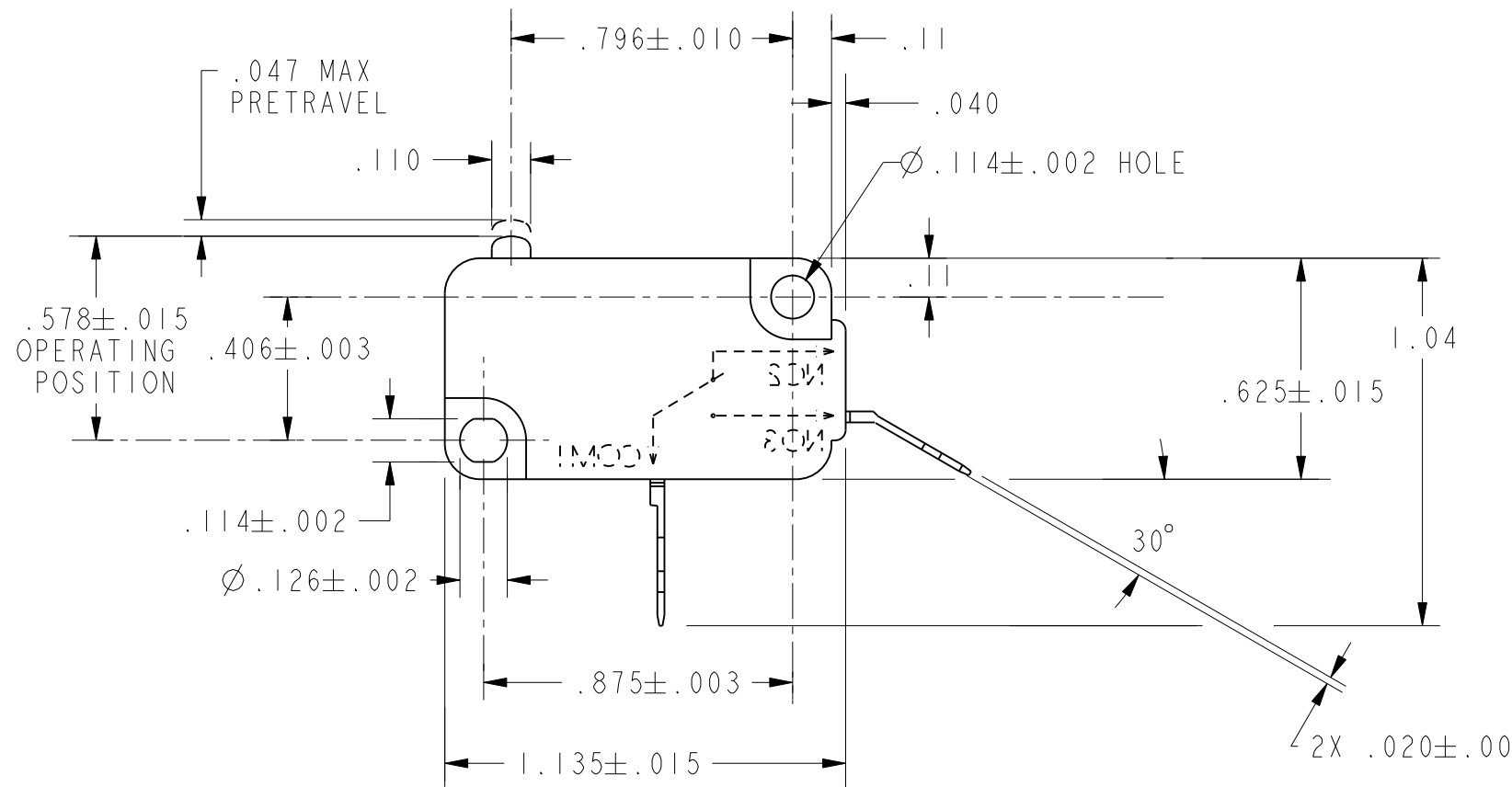
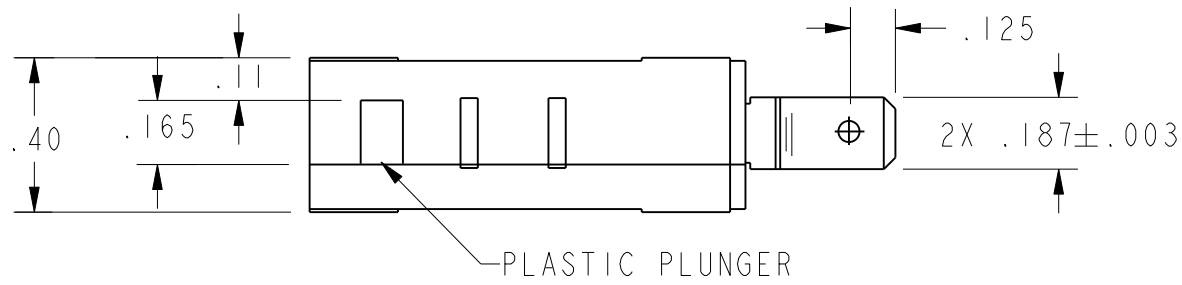


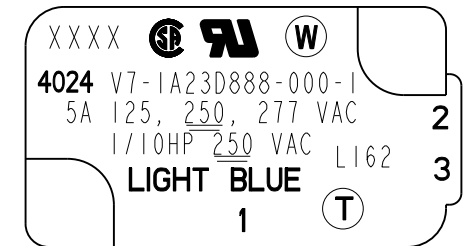
CW-B0040

REV	DOCUMENT	CHANGED BY	CHECK
1	53310	LJK 7JAN02	SAV
2	204922	GRT 21FEB02	SAV
3	0013468	RS 30MAY05	AK



- NOTES
- 1 - SWITCH MATERIALS WILL WITHSTAND 150°C
 - 2 - MARK SWITCH WITH CUSTOMER PART NO. 4024 AND COLOR WORD "LIGHT BLUE"
 - 3 - 1, 2 AND 3 TERMINAL IDENTIFICATION NUMBERS MARKED ON COVER
 - 4 - RESTRICTED LISTING

SWITCH MARKINGS PER DIAGRAM BELOW
 "XXXX" DENOTES 4 DIGIT DATE CODE
 INK BRAND COLOR: WHITE



CHARACTERISTICS	
OPERATING FORCE-----	150 GRAMS MAX
RELEASE FORCE-----	25 GRAMS MIN
DIFFERENTIAL TRAVEL-----	.002-.010
OVERTRAVEL-----	.050 MIN
RELEASE TRAVEL-----	.010 MIN
FREE POSITION-----	.625 MAX

ELECTRICAL DATA	
CONTACT ARRANGEMENT S P N O	
L162 5A 125, 250, 277 VAC 1/10HP 250 VAC	

UNLESS OTHERWISE SPECIFIED TOLERANCES ARE:			
	<input checked="" type="checkbox"/> US (inch) CUSTOMARY	<input type="checkbox"/> SI (mm) METRIC	
NO PLACE	X	±.040	±1
ONE PLACE	.X	±.030	±0,4
TWO PLACE	.XX	±.015	±0,15
THREE PLACE	.XXX	±.005	±
ANGLES		±	±
RAW MATERIAL-COMMERCIAL STANDARD			
THIRD ANGLE PROJECTION			

DRAWN	JLH	7JAN02
CHECK	SAV	7JAN02
THIS DRAWING COVERS A PROPRIETARY ITEM AND IS THE PROPERTY OF HONEYWELL. THIS DRAWING IS NOT TO BE COPIED OR USED WITHOUT THE PERMISSION OF HONEYWELL.		
DIMENSIONS ARE TO BE MET BEFORE PROTECTIVE COATINGS ARE APPLIED		
PTC 2D	ASME Y14.5M-1994	

Honeywell			
TITLE SWITCH, BASIC			
SIZE	DWG TYPE	DRAWING NAME	REV
B	I	V7-1A23D888-000-1	3
SCALE	NONE	WEIGHT	SHEET 1 OF 1