

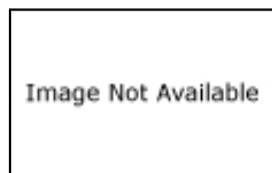


Home > Products > MICRO SWITCH™ Heavy-Duty Limit Switches > HDLS > Product Page

Order Product and Get Support

- U.S. Authorized Distributors
- Global Sales & Service
- N. American Sales Reps
- Distributor Inventory
- Technical Assistance
- White Papers
- Literature Request
- Test and Measurement Catalog
- RoHS Product List
- Customer Feedback

LS4A3K-7AA



Series HDLS Non Plug-in: Side Rotary; 1NC 1NO SPDT Snap Action; 20 mm

Features

Wide variety of operating heads
 Field adjustable operating modes, for reduced inventory
 Convenience of on-the-spot adjustment instructions
 Complete choice of circuitry and electrical rating options
 Plug-in and non plug-in versions have identical operating characteristics and are dimensionally interchangeable
 Manifold (rear-wire) version
 Explosion-proof versions
 Low temperature versions to -40° C (-40° F)
 Captive head and body screws
 Designed to withstand seismic shock
 Stainless steel (NEMA 4X) versions
 Pre-leaded cable or pre-wired connector types
 Epoxy filled wash down (NEMA 6P) types
 Completely fluorocarbon (FC) sealed versions

Potential Applications

Machine Tools
 Material Handling
 Packaging
 Presses
 Pulp and Paper
 Welding
 PLC Interface

Description

Sensing and Control offers the world's most advanced line of MICRO SWITCH™ heavy-duty limit switches. These switches include boss-and-socket head design for secure head-to-body retention, unique all-metal drive train for consistent operating characteristics even at high temperature (lasts longer without the need for frequent adjustment than drive trains with plastic parts,) self-lifting pressure plate terminals save wiring time, easily identified grounding terminal (inside) for compliance with OSHA and other regulatory agency standards, one piece flat gasket (seals better than gaskets that go around curves and corners, does not contact terminal pins to reduce chances of fluid migration,) front mounting and interchangeability of single- and double-pole switches, plug-in and non plug-in with one another and with other switch brands, tracking interchangeability of actuator levers for single- and double-pole switches, plug-in and non plug-in, twin shaft seals for an extra measure of protection, inner FC O-ring seal, outer Buna-N seal (all FC available,) FC shaft and diaphragm seals on side rotary switches, rugged corrosion-resistant zinc head and body are phosphate treated and epoxy finished, exclusive teller tab assures proper torque (when it cannot be moved the lever is tight enough to prevent slippage) and domestic and international conduit taps.

Supporting Documentation

- [Installation Instructions](#)

Product Specifications	
Availability	Global
Operating Force (O.F.)	0,45 N m max. [4 in lb max.]
Pretravel (P.T.)	15° max.
Overtravel (O.T.)	60° min.
Differential Travel (D.T.)	5° max.
Product Type	MICRO SWITCH™ Heavy - Duty Limit Switches
Actuator	Side Rotary
Lever Style	Plastic Conveyor Roller Lever (1.5 in dia. x 3.8 in wide)
Circuitry	1NC 1NO Single - Pole Double - Throw, Snap - Action, Double - Break
Ampere Rating	10 A (Thermal)
Supply Voltage	600 Vac and 250 Vdc max.
Housing Material	Zinc Die - Cast
Termination Type	20 mm
Housing Type	HDLS Non Plug - in
Series Name	HDLS
Sealing	NEMA 1, 3, 4, 4X, 6, 6P, 12, 13
Approvals	UL listed, CSA Certified, CE Certified, CCC Certified
CSA File #	LR57326/Master Contract 152457
UL File #	E37138
Operating Temperature Range	- 12 °C to 121 °C [10 °F to 250 °F]
Comment	Lever Included
Agency Approvals and Standards	EN60947 - 1, EN60947 - 5 - 1
UNSPSC Code	302119
UNSPSC Commodity	302119 Switches and controls and relays
Sealed	Industrial

My Links

[Login to iCOM](#)
[Login as Rep/AD](#)
[Login as Guest](#)
[Login to Digital University](#)

Keyword Search

Search for product and support information.

All Sensing and Control

Product Search

Part number search:

Use (*) to expand search

[Specification Search](#)