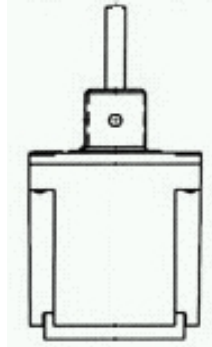




Home > Products > MICRO SWITCH™ Toggle Switches > TL > Product Page

102TL2263-7



Actual product appearance may vary.

TL Series Toggle Switch, 2 pole, 3 position, IWTS (16-20 Gage) terminal, No Lever

Order Product and Get Support

- U.S. Authorized Distributors
- Global Sales & Service
- N. American Sales Reps
- Distributor Inventory
- Technical Assistance
- White Papers
- Literature Request
- Test and Measurement Catalog
- RoHS Product List
- Customer Feedback

Features

Environmentproof sealing
 1,2, and 4 pole circuitry
 Standard and pull-to-unlock levers
 2 and 3 position, maintained and momentary toggle action
 Temperature range: -85° F to +160° F
 Completely sealed switching chamber
 Step-design case provides added space between terminals to help prevent shorting
 UL recognized, CSA certified
 CE approved

Potential Applications

Industrial machinery and equipment
 Military and commercial aviation
 Construction equipment
 Test instruments
 Agricultural machinery
 Process control
 Medical instrumentation

Description

MICRO SWITCH™ TL Series toggle switches have high strength, temperature resistant, non-tracking case material and silver cadmium oxide contacts. Pull-to-Unlock toggle levers prevent accidental operation; the lever must be pulled approx. 2,3 mm (0.09 inches) to change positions.

Supporting Documentation

- [Accessory: Lever Sleeve](#)
- [Accessory: Seals](#)
- [Accessory: Nuts](#)
- [Engineering Drawing](#)

Product Specifications			
Circuitry/Operating action	Keyway	Center	Opposite
	Momentary Position	Position	Momentary Position
Product Type	MICRO SWITCH™ Toggle Switch		
Ampere/Voltage Range (Resistive Load)	0.75 A at 115 Vdc, 0.5 A to 7.5 A at 0.5 Vdc to 28 Vdc, 0.5 A to 6 A at 0.5 Vac to 230 Vac, 0.5 A at 250 Vdc		
Circuitry	DPDT		
Action	3 position		
Mounting	Bushing 15/32 in		
Termination	IWTS (16 -20 Gage)		
Lever Type	No Lever		
Comment	100% immersion test per QS 047 287		
Availability	Global		
UNSPSC Code	30211908		
UNSPSC Commodity	30211908 Toggle switches		
Series Name	TL		

Keyword Search

Search for product and support information.

All Sensing and Control

Product Search

Part number search:

Use (*) to expand search

Specification Search