

# MICRO SWITCH

A DIVISION OF MINNEAPOLIS-HONEYWELL REGULATOR COMPANY  
 FREEPORT, ILLINOIS

FED. MFR. CODE 91929

# ACTUATOR - SWITCH

CATALOG LISTING  
**MCA2711H**

MCA2711H

M

DRAWING NUMBER

ISSUE 7

REPLACES

SR 4912

CHECK OUT 19 DEC 55

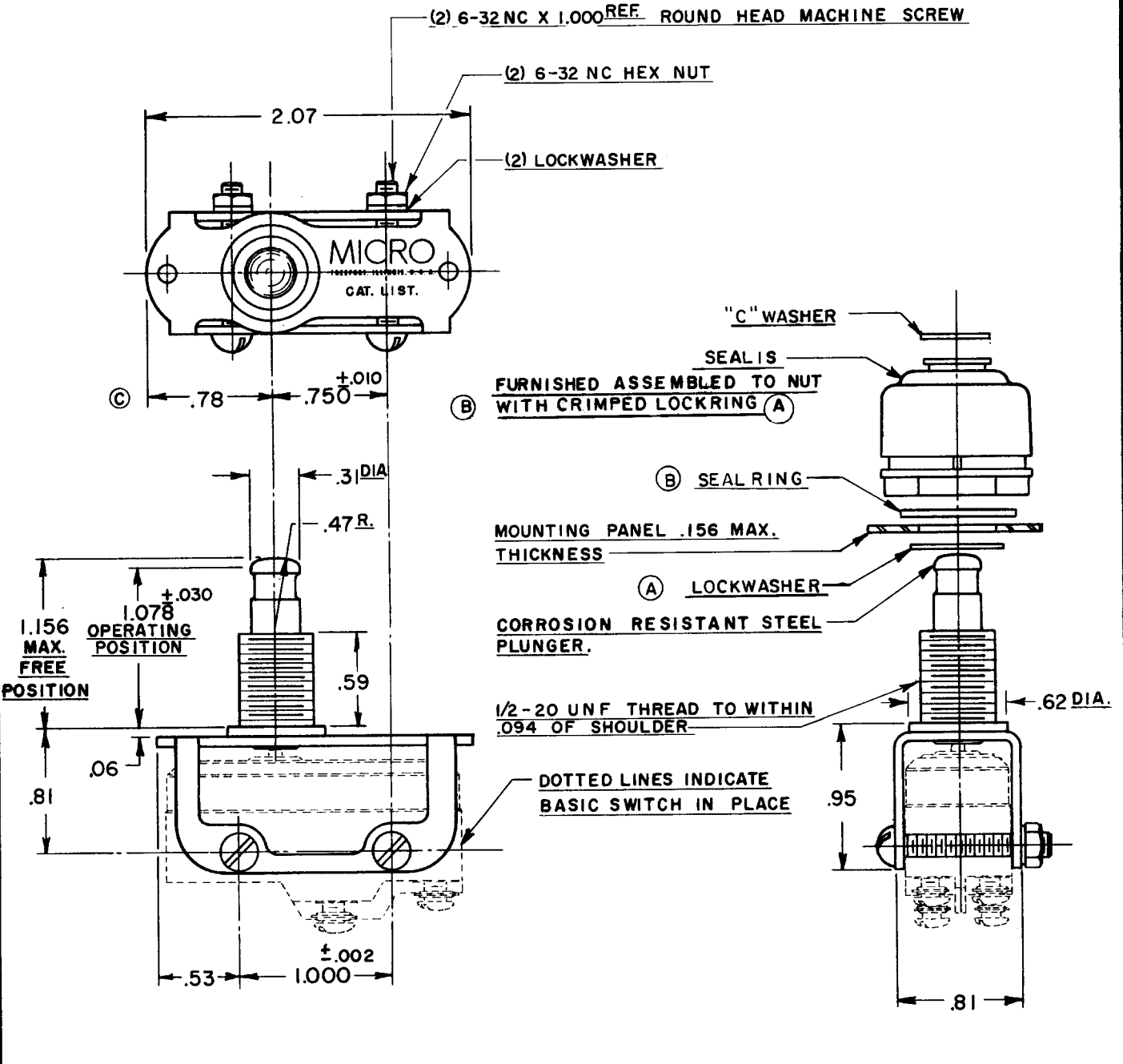
CHECK BLS 19 DEC 55

CHECK

RLZ 16 DEC 55

CHECK 55

R.E.R. 16 DEC 55



**NOTE:**

1 - SCREWS, NUTS, LOCKWASHERS, AND ELASTOMER SEAL ASSEMBLY FURNISHED UNASSEMBLED

THIS DRAWING COVERS A PROPRIETARY ITEM AND IS THE PROPERTY OF MICRO SWITCH, A DIVISION OF HONEYWELL. THIS DRAWING IS NOT TO BE COPIED OR USED WITHOUT THE APPROVAL OF MICRO SWITCH.

**CHARACTERISTICS WITH BA-3ST BASIC SWITCH INSTALLED**

FULL OVERTRAVEL FORCE----- 6 LBS. MAX.

OVERTRAVEL-----:172 MIN.

**ELECTRICAL DATA**

CONTACT ARRANGEMENT

BREAK DISTANCE

**SCALE FULL**

DO NOT SCALE PRINT

UNLESS OTHERWISE SPECIFIED DIMENSIONS ARE IN INCHES

**TOLERANCES ARE:**

ONE PLACE	(.0)	±.030
TWO PLACE	(.00)	±.015
THREE PLACE	(.000)	±.008
ANGLES		±

WEIGHT

DRAWN

74-88