

MICRO SWITCH

A DIVISION OF MINNEAPOLIS-HONEYWELL REGULATOR COMPANY
 PREPARED, ILLINOIS
 FED. MFR. CODE 91929

ACTUATOR-SWITCH

CATALOG LISTING

JS-49

(M) SKETCH 16058
 ISSUE 1

JS-49

M

DRAWING NUMBER

8

X

ISSUE

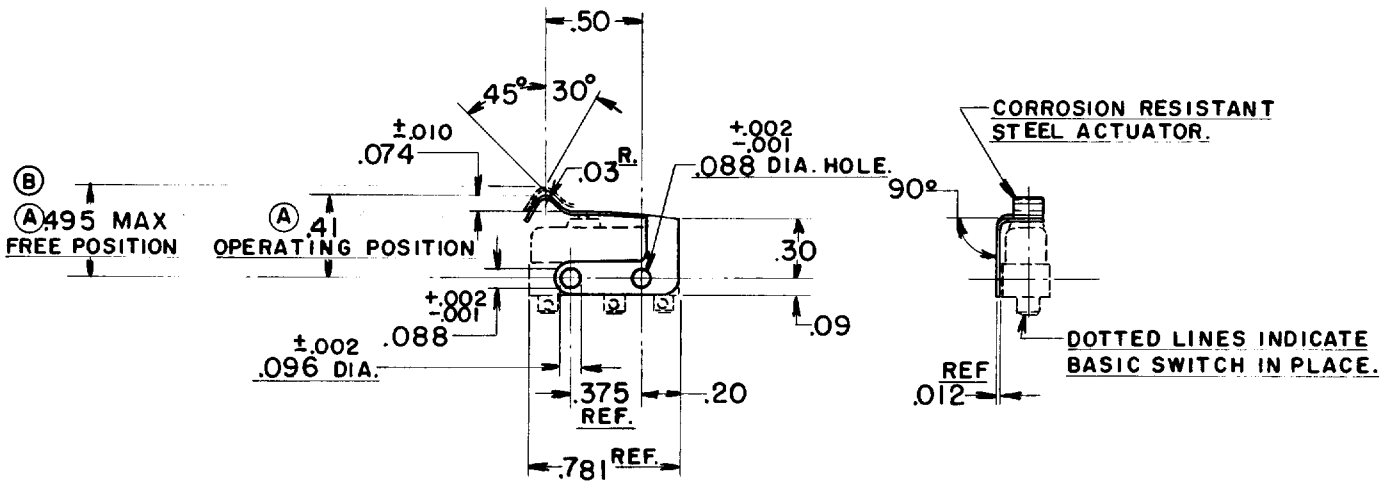
3

REPLACES
 RELEASE NO. S.R. 6568

REVISIONS

A	CO12901	MBF	18 MAY 59
B	CO17304	M B F	4 DEC 63

CNT	25 MAY 57	CHECK
GCH	28 MAY 57	CHECK
K.A.F.	24 MAY 57	CHECK



THIS DRAWING COVERS A PROPRIETARY ITEM AND IS THE PROPERTY OF MICRO SWITCH, A DIVISION OF HONEYWELL. THIS DRAWING IS NOT TO BE COPIED OR USED WITHOUT THE APPROVAL OF MICRO SWITCH.

CHARACTERISTICS WITH ISMI BASIC SWITCH INSTALLED

OPERATING FORCE	18 OZ MAX
RELEASE FORCE	2 OZ MIN
PRETRAVEL	.125 MAX
DIFFERENTIAL TRAVEL	.015 MAX
OVERTRAVEL	.015 MIN

ELECTRICAL DATA

CONTACT ARRANGEMENT

SCALE FULL

DO NOT SCALE PRINT

UNLESS OTHERWISE SPECIFIED
 DIMENSIONS ARE IN INCHES
TOLERANCES ARE:
 ONE PLACE (.0) ±.030
 TWO PLACE (.00) ±.015
 THREE PLACE (.000) ±.005
 ANGLES ± 2°

WEIGHT