

MICRO SWITCH

A DIVISION OF MINNEAPOLIS-HONEYWELL REGULATOR COMPANY
 FREEPORT, FLORIDA

ACTUATOR-SWITCH

FED. MFR. CODE 91929

(M) SKETCH 13845

JE-3

M

DRAWING NUMBER

ISSUE 3

REPLACES ISSUE 1

RELEASE NO. S.R. 5947

CNT 2 JAN. 57

CHECK

2 JAN. 57

RED

4 JAN. 57

CHECK

6 CH

14 DEC. 56

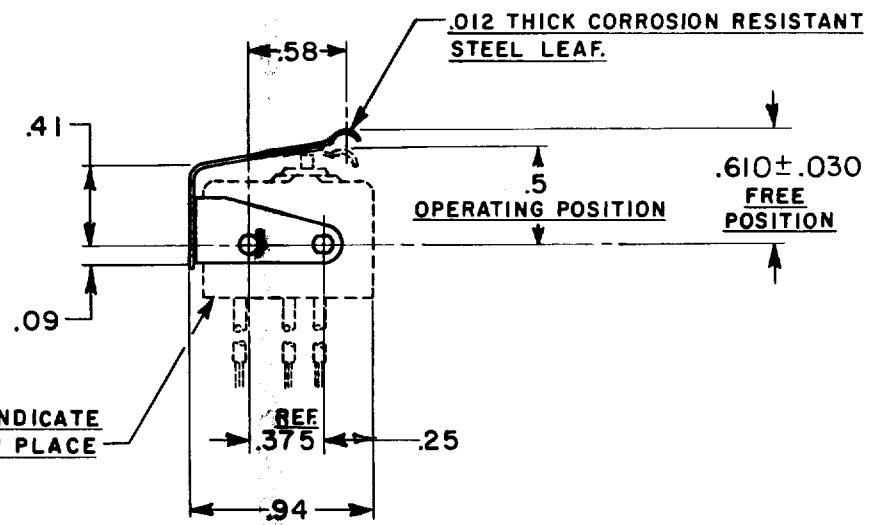
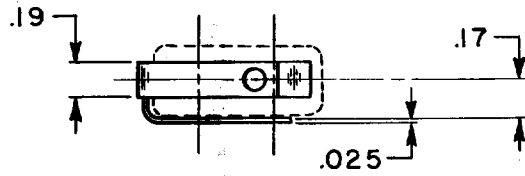
CHECK

K.A.E.

FO-50378

DRAWN

ISSUE 1



REVISIONS

| | | | | | |
|---|----|-------|-------|----|--------|
| A | CO | 54420 | WJM | 27 | JAN 84 |
| B | CO | 62752 | M A M | 29 | JAN 88 |

THIS DRAWING COVERS A PROPRIETARY ITEM AND IS THE PROPERTY OF MICRO SWITCH, A DIVISION OF HONEYWELL. THIS DRAWING IS NOT TO BE COPIED OR USED WITHOUT THE APPROVAL OF MICRO SWITCH.

| CHARACTERISTICS | ELECTRICAL DATA | | SCALE-FULL | |
|-------------------------------------|---------------------|----------------|---|--|
| OPERATING FORCE — — — — 14 OZ. MAX. | CONTACT ARRANGEMENT | BREAK DISTANCE | DO NOT SCALE PRINT | |
| RELEASE FORCE — — — — 5 OZ. MIN. | | | UNLESS OTHERWISE SPECIFIED DIMENSIONS ARE IN INCHES | |
| DIFFERENTIAL TRAVEL — — — .015 MAX. | | | TOLERANCES ARE: | |
| OVERTRAVEL — — — — .010 MIN. | | | ONE PLACE (.0) ±.030 TWO PLACE (.00) ±.015 THREE PLACE (.000) ±.005 ANGLES ± | |
| | | | WEIGHT | |