

MICRO SWITCH
a Honeywell Division

FED. MFG. CODE 91 929

SWITCH - BASIC

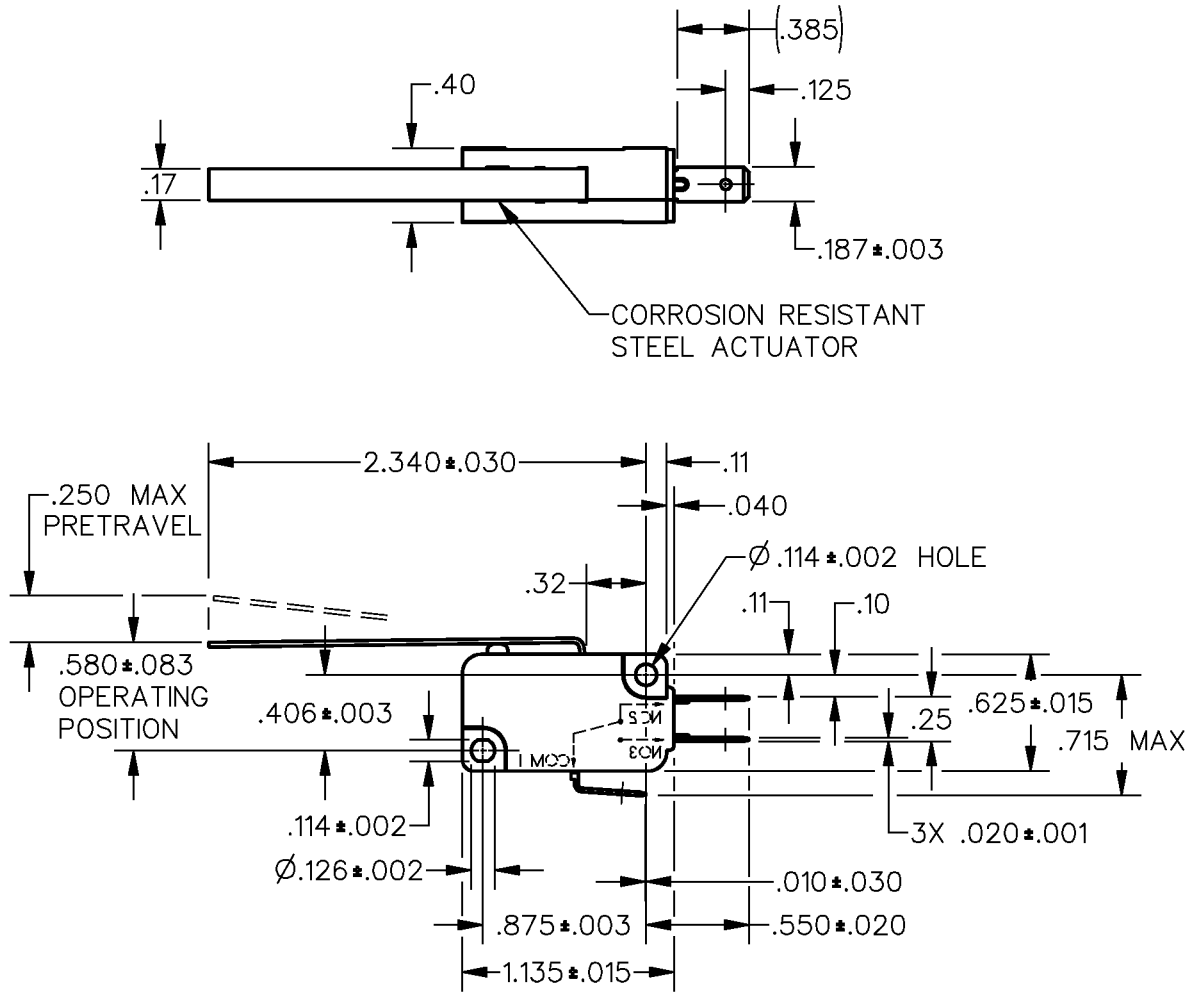
CATALOG LISTING

V7-6C17D8-048-1

CW-C6019

CATALOG LISTING
V7-6C17D8-048-1
PAGE 1 OF 1
RELEASE NO. PR-22880
REPLACES
ISSUE
M
2

REVISIONS
A REL PR22880
DCS
23 JUN 97
CHECK
23 JUN 97
CHECK
DCS
3 MAR 97
DRAWN
DDM/CAD

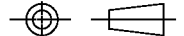


NOTE
1 - RESTRICTED LISTING

ANSI Y14.5M-1982 APPLIES

THIS DRAWING COVERS A PROPRIETARY ITEM AND IS THE PROPERTY OF MICRO SWITCH, A DIVISION OF HONEYWELL. THIS DRAWING IS NOT TO BE COPIED OR USED WITHOUT THE APPROVAL OF MICRO SWITCH.

THIRD ANGLE PROJECTION



CHARACTERISTICS	ELECTRICAL DATA	SCALE FULL	DO NOT SCALE PRINT
OPERATING FORCE --- 120 GRAMS MAX	CONTACT ARRANGEMENT S P D T	UNLESS OTHERWISE SPECIFIED TOLERANCES ARE	
RELEASE FORCE --- 19 GRAMS MIN	L215 15.1A 1/2HP 125, 250 OR 277 VAC 1/2A 125 VDC 1/4A 250 VDC; 5A 120 VAC "L"	ONE PLACE (.0)	± .030
DIFFERENTIAL TRAVEL --- .010-.054		TWO PLACE (.00)	± .015
OVERTRAVEL --- .124 MIN		THREE PLACE (.000)	± .005
RELEASE TRAVEL --- .030 MIN		ANGLES	±
		WEIGHT	

