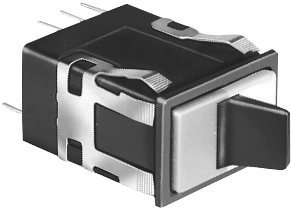


# Manual Switches

## Solid State Paddle

AML13 Series

### INCANDESCENT OR NON-LIGHTED DISPLAY



Covers ordered separately.

#### FEATURES

- Hall effect reliability.
- Provides low voltage signals that interface with nearly all DC logic level loads.
- 5 VDC and 6-16 VDC supply voltage.
- 2 or 3-position operation.
- Toggle type paddle operators permanently installed in rectangular housings.

|                     |              |
|---------------------|--------------|
| Electrical Data     | page 19      |
| Paddle Covers       | pages 47, 48 |
| Lamps and LEDs      | page 58      |
| Accessories         | page 57      |
| Mounting Dimensions | pages 59, 61 |

- Covers for the switch housing may be lighted or unlighted.
- UL recognized.
- Lamps can be furnished installed or ordered separately.
- Lamp circuit independent of switch circuit.

### AML13 ORDER GUIDE

| AML13 E  | B  | A  | 2   | AA  | 01  |
|--|--|--|---|---|---|
| Housing Type   | Operator/Bezel Color   | Incandescent Lamp Type   | Terminal Type   | Circuitry Code  | Operating Action                                |
| <b>AML13 E</b><br>Rectangular<br>Non-Lighted<br><br><b>AML13 F</b><br>Rectangular<br>1 Lamp Ckt. (A)<br><br><b>AML13 G</b><br>Rectangular<br>2 Lamp Ckts.<br>(A & B) | <b>B</b><br>Black/Black<br><br><p>① The "MICRO SWITCH" identification is shown on this side of the switch housing.</p> | <b>A</b><br>No Lamp Installed<br><br><b>B</b><br>6 V Lamp*<br><br><b>C</b><br>14 V Lamp*<br><br><b>E</b><br>28 V Lamp* | <b>2</b><br>.110 × .020<br>(Solder or Quick-Connect)<br><br><b>3</b><br>.025 × .025<br>(Printed Ckt., or Push-On) | <b>One IC (Ckt. A):</b><br><b>AA</b><br>5 V Sinking<br><br><b>BA</b><br>6-16 V Sinking<br><br><b>DA</b><br>4.5-24 VDC Sinking<br><br><b>Two IC's (Ckts. A &amp; B):</b><br><b>AC</b><br>5 V Sinking<br><br><b>BC</b><br>6-16 V Sinking<br><br><b>DC</b><br>4.5-24 VDC Sinking | Insert Code Numbers from Operating Action Chart |

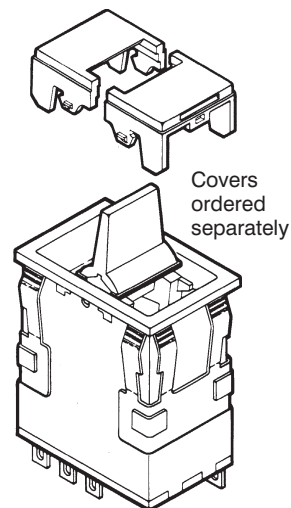
\* Lamps will be installed per each lamp circuit specified in the Housing Type.

Example: **AML13EBA2AA01**  
Rectangular non-lighted paddle switch housing; black paddle and bezel; .110 × .020 terminals; with one 5 V sinking IC pack; two position operation.

#### OPERATING ACTION

| 2 Position:   |                     |        |
|---------------|---------------------|--------|
| Maint.        | <b>01</b><br>None   | Maint. |
| Mom.          | <b>02</b><br>None   | Maint. |
| Maint.        | <b>03</b><br>None   | Mom.   |
| 3-Position:** |                     |        |
| Maint.        | <b>04</b><br>Maint. | Maint. |
| Mom.          | <b>05</b><br>Maint. | Mom.   |
| Maint.        | <b>06</b><br>Maint. | Mom.   |
| Mom.          | <b>07</b><br>Maint. | Maint. |

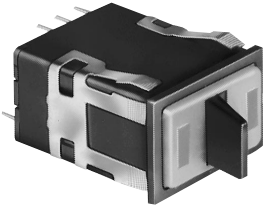
\*\* 3-position switches must have two circuits specified in the listing (circuitry codes "AC" or "BC").



# Manual Switches

## Solid State Paddle

### LED DISPLAY



Covers with LED "window" ordered separately.

LEDs are not replaceable.

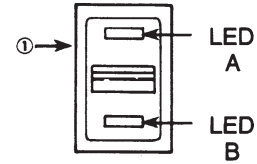
### FEATURES

- Hall effect reliability.
- Rectangular, high efficiency LED's give flush display area and wide angle indication.
- Available with or without diode protection for the LED's.
- 5 thru 24 VDC devices have an internal resistor to maintain LED current at nominal 20 mA.
- LED circuit independent of switch circuit.
- UL recognized.

|                     |              |
|---------------------|--------------|
| Electrical Data     | page 19      |
| Paddle Covers       | pages 47, 48 |
| Lamps and LEDs      | page 58      |
| Accessories         | page 57      |
| Mounting Dimensions | pages 59, 61 |

### AML15 ORDER GUIDE

| AML15 F  | B                       | B   | 2   | AA  | 01  | R  | X  |
|--|-------------------------|---|---|---|---|--|--|
| Housing Type   | Operator Bezel Color    | LED Voltage   | Terminal Type/ Diode Protection   | Circuitry Code  | Operating Action                                | LED Color (LED A)  | LED Color (LED B)  |
| <b>AML15 F</b><br>Rect.<br>1 LED<br><br><b>AML15 G</b><br>Rect.<br>2 LED's | <b>B</b><br>Black/Black | <b>B</b><br>V*<br><br><b>C</b><br>5 V<br><br><b>D</b><br>10 V<br><br><b>E</b><br>15 V<br><br><b>F</b><br>24 V | <b>2</b><br>.110 × .020<br>(Solder or Quick-Connect)<br><br><b>3</b><br>.025 × .025<br>(Printed Circuit, or Push-On)<br><br><b>8</b><br>.110 × .020<br>w/Diode Protection for LED | <b>One IC (Ckt. A):</b><br><b>AA</b><br>5 V Sinking<br><br><b>BA</b><br>6-16 V Sinking<br><br><b>DA</b><br>4.5-24 VDC Sinking<br><br><b>Two IC's (Ckts. A &amp; B):</b><br><b>AC</b><br>5 V Sinking<br><br><b>BC</b><br>6-16 V Sinking<br><br><b>DC</b><br>4.5-24 VDC Sinking | Insert Code Numbers from Operating Action Chart | <b>R</b><br>Red<br><b>Y</b><br>Yellow<br><b>G</b><br>Green<br><b>X</b><br>No LED | <b>R</b><br>Red<br><b>Y</b><br>Yellow<br><b>G</b><br>Green<br><b>X</b><br>No LED |

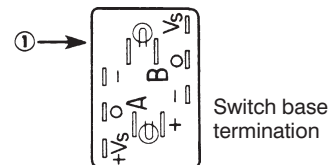


\* See LED application information for devices without current-limiting resistor, page 58.

Example: **AML15FBB2AA01RX**  
 Rectangular paddle switch housing with one LED, without resistor, black paddle and bezel; .110 × .020 terminals, with one 5 V sinking IC pack; 2-position operation.

### CIRCUIT OUTPUT STATES

| <b>Ckt. A</b> | Low (operated) | High | High           |
|---------------|----------------|------|----------------|
| <b>Ckt. B</b> | High           | High | Low (operated) |



① The "MICRO SWITCH" identification is on this side of the switch housing.