

**MICRO SWITCH**  
a Honeywell Division  
FED. MFG. CODE 91929

SWITCH-ENCLOSED

CATALOG LISTING  
**BZFI-2RN-LH**  
(LEFT HAND)

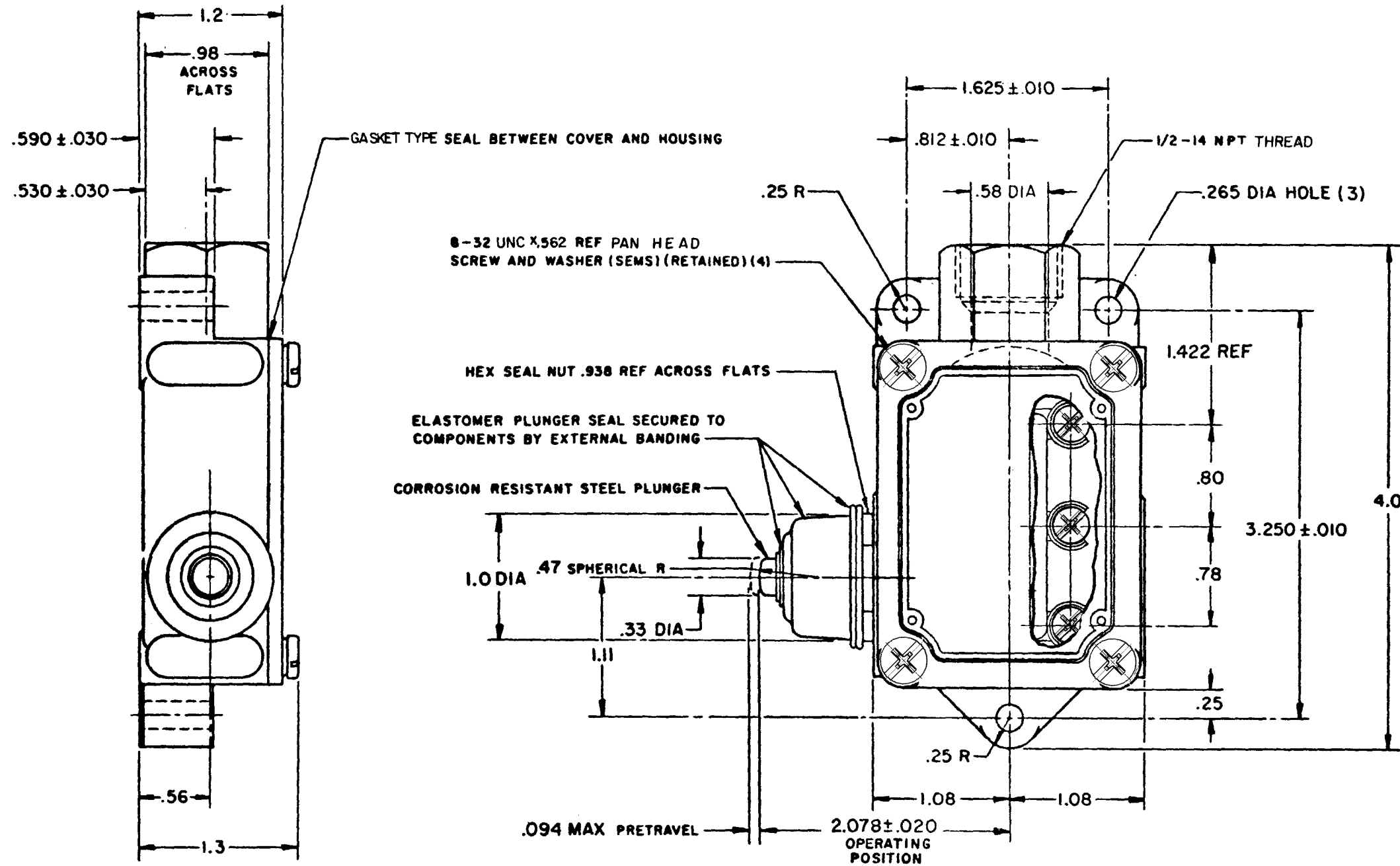
CATALOG LISTING  
**BZFI-2RN-LH**

ISSUE  
**M**  
14

REVISIONS  
A  
CO-73287M  
GJW  
16 MAY 95

FORMTEK

RELEASE NO. CHECK 25 MAY 95 CHECK JJA 16 MAY 95 CHECK GJW



THIS DRAWING COVERS A PROPRIETARY ITEM AND IS THE PROPERTY OF MICRO SWITCH, A DIVISION OF HONEYWELL. THIS DRAWING IS NOT TO BE COPIED OR USED WITHOUT THE APPROVAL OF MICRO SWITCH

THIRD ANGLE PROJECTION

CHARACTERISTICS	
OPERATING FORCE	2 LB MAX
RELEASE FORCE	1/2 LB
DIFFERENTIAL TRAVEL	.004 MAX
OVERTRAVEL	.219 MIN
BASIC SWITCH REPLACEMENT BZ-2R708-P7	

ELECTRICAL DATA	
CONTACT ARRANGEMENT S P D T	
-L96-	15 A-125, 250, OR 480 VAC 1/2 A-125 VDC; 1/4 A-250 VDC 1/8 HP-125 VAC; 1/4 HP-250 VAC

SCALE FULL	
DO NOT SCALE PRINT	
UNLESS OTHERWISE SPECIFIED TOLERANCES ARE	
ONE PLACE	(.0) ± .030
TWO PLACE	(.00) ± .015
THREE PLACE	(.000) ± .005
ANGLES	±
WEIGHT .500 LB	

NOTE

1 - 8-32 UNC X (.219) BINDER HEAD, COMBINATION, TERMINAL SCREWS AND CUPWASHERS (SEMS)(3)