



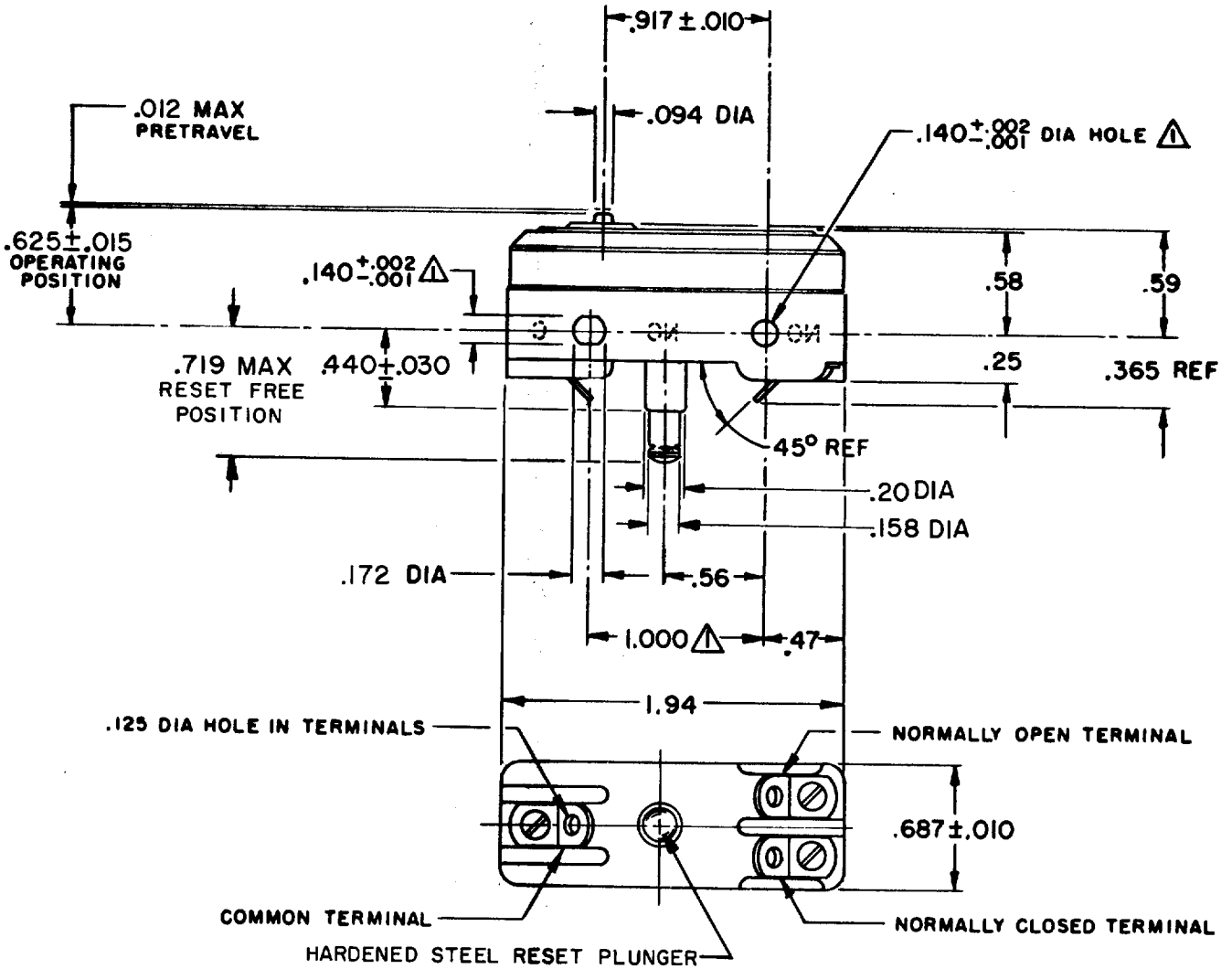
MICRO SWITCH

FREEPORT, ILLINOIS, U. S. A.
A DIVISION OF HONEYWELL

FED. MFG. CODE 91929

SWITCH - BASIC

CATALOG LISTING
BZ-RX243



NOTE -

- 1 - MOUNTING HOLES WILL ACCEPT PINS OR SCREWS OF .139 MAX DIA ON 1.000 ± .002 CENTERS
- 2 - SWITCH WILL WITHSTAND TEMPERATURE OF 250°F
- 3 - "NO", "NC" & "C" STAMPED ON RIGHT SIDE OF SWITCH

THIS DRAWING COVERS A PROPRIETARY ITEM AND IS THE PROPERTY OF MICRO SWITCH, A DIVISION OF MINNEAPOLIS-HONEYWELL REGULATOR CO. THIS DRAWING IS NOT TO BE COPIED OR USED WITHOUT THE APPROVAL OF MICRO SWITCH.

CHARACTERISTICS

OPERATING FORCE - - - - - 7-9 OZ
OVERTRAVEL - - - - - .005 MIN

RESET CHARACTERISTICS

OPERATING FORCE - - - - - 2-9 OZ

ELECTRICAL DATA

CONTACT ARRANGEMENT
SINGLE POLE DOUBLE THROW MAINTAINED CONTACT

UNDERWRITERS' LAB. INC. LISTED RATING
15 A - 125, 250, OR 480 VAC
-L 67-
1/4 HP - 125 VAC; 1/2 HP - 250 VAC
1/2 A - 125 VDC; 1/4 A - 250 VDC

SCALE FULL

DO NOT SCALE PRINT

UNLESS OTHERWISE NOTED

DIMENSIONS ARE IN INCHES

TOLERANCES ARE:

ONE PLACE	(.0)	± .030
TWO PLACE	(.00)	± .015
THREE PLACE	(.000)	± .005
ANGLES		±

WEIGHT .055 LB



-L310-

BZ-RX243
M
 DRAWING NUMBER
28
 ISSUE
45
 RELEASE NO. PR-610
 12SEP07
 PSR
 CHECK
 10 APR 69
 GCH
 10 APR 69
 CHECK
 10 APR 69
 DAW
 CHECK
 APR 69
 RER
 APR 69
 DRAWN
 RASTER
 FO-50378-004