

# MICRO SWITCH

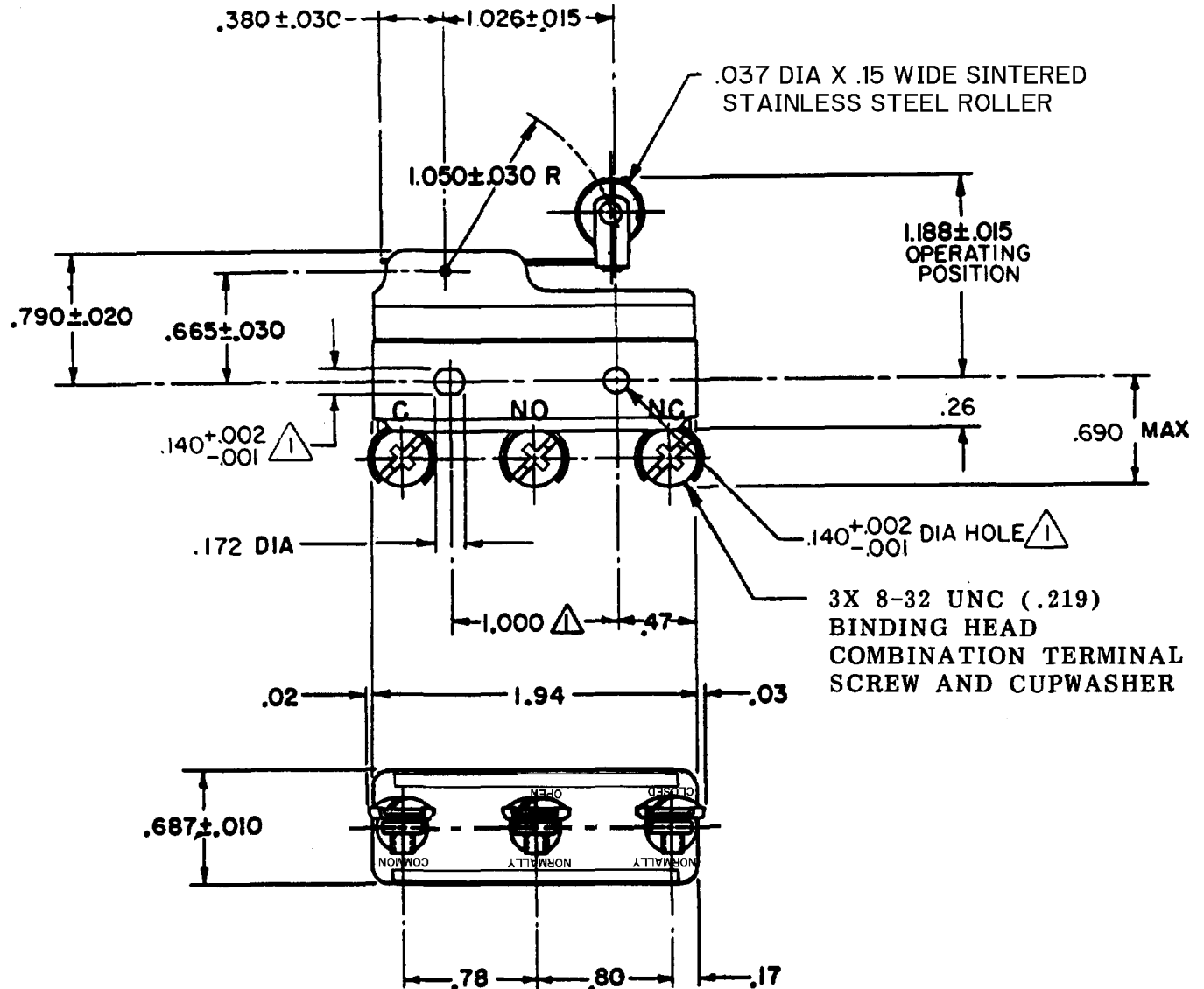
FREEPORT ILLINOIS, U.S.A  
A DIVISION OF HONEYWELL  
FED. MFG. CODE 91929

## SWITCH - BASIC

CATALOG LISTING

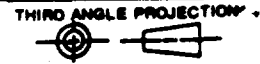
BZ-RW8422-P4

DRAWING NUMBER: BZ-RW8422-P4  
 PAGE 1 OF 1  
 ISSUE: 7  
 REVISIONS:  
 A CO-88427 5 FEB 91  
 B CO-73287-C 20 OCT 93  
 C CO-75204R 1 FEB 94  
 D CO-75367B 3 MAR 94  
 E CO-77863 6 MAY 96  
 A CO93986 3 MAR 99  
 FORMTEK FO-52848-A  
 DRAWN: B A B12 NOV 90  
 CHECKED: DAW 3 NOV 90  
 RELEASE NO. PR-18782  
 REPLACES:



**NOTE**  
 1 MOUNTING HOLES WILL ACCEPT PINS OR SCREWS OF .139 MAX DIA ON 1.000 ± .002 CENTERS

THIS DRAWING COVERS A PROPRIETARY ITEM AND IS THE PROPERTY OF MICRO SWITCH, A DIVISION OF HONEYWELL. THIS DRAWING IS NOT TO BE COPIED OR USED WITHOUT THE APPROVAL OF MICRO SWITCH.



CHARACTERISTICS	
OPERATING FORCE	----- 2 OZ MAX
PRETRAVEL	----- .094 MAX
RELEASE FORCE	----- 1/4 OZ MIN
DIFFERENTIAL TRAVEL	----- .001-.006
OVERTRAVEL	----- .094 MIN

ELECTRICAL DATA	
CONTACT ARRANGEMENT S P D T	
L103	
15A 125, 250 OR 480 VAC	
1/8HP 125 VAC, 1/4HP 250 VAC	
FIG. 288	
FIG. 299	
FIG. 306	
16A 250V ~ T85 5E4	

SCALE FULL	DO NOT SCALE PRINT
UNLESS OTHERWISE SPECIFIED TOLERANCES ARE	
ONE PLACE (.0)	± .030
TWO PLACE (.00)	± .015
THREE PLACE (.000)	± .005
ANGLES	±

WEIGHT .075 LB