

MICRO SWITCH

FREEPORT ILLINOIS, U.S.A
A DIVISION OF HONEYWELL
FED. MFG. CODE 91929

SWITCH - BASIC

CATALOG LISTING
BZ-RW822-P4

ANE9005

CATALOG LISTING

BZ-RW822-P4

M

ISSUE
8

REVISIONS

A	CO-70184	20 JAN 06
B	CO-73287-G	20 OCT 93
C	CO-75204B	1 FEB 94
D	CO-75367B	3 MAR 94
E	CO-77863	6 MAY 96
F	203155	24 MAY 01
G	0018004	20 JAN 06

REPLACES

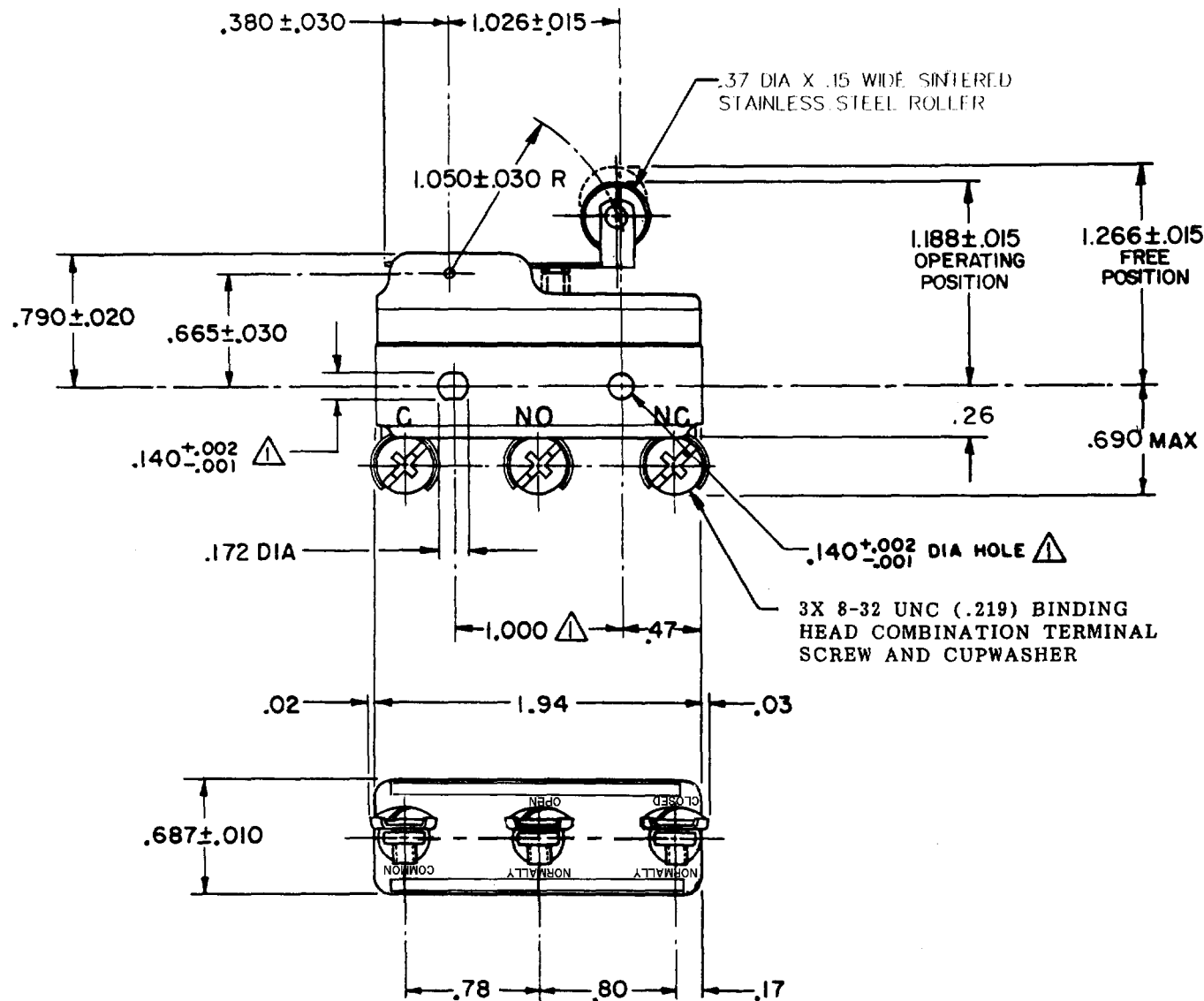
RELEASE NO. CO-34271

CHECK

20 JAN 06

CHECK

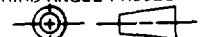
NOV 74



NOTE -
▲ - MOUNTING HOLES WILL ACCEPT PINS OR SCREWS OF .139 MAX DIA ON 1.000 ± .002 CENTERS

THIS DRAWING COVERS A PROPRIETARY ITEM AND IS THE PROPERTY OF MICRO SWITCH. A DIVISION OF HONEYWELL. THIS DRAWING IS NOT TO BE COPIED OR USED WITHOUT THE APPROVAL OF MICRO SWITCH.

THIRD ANGLE PROJECTION



CHARACTERISTICS

OPERATING FORCE----- 5 1/2 OZ MAX
RELEASE FORCE----- 1 1/2 OZ MIN
DIFFERENTIAL TRAVEL----- .001-.006
OVERTRAVEL----- .094 MIN

ELECTRICAL DATA

CONTACT ARRANGEMENT
S P D T
L103 15A 125, 250 OR 480 VAC
1/8HP 125 VAC, 1/4HP 250 VAC



L288
L306
L315
16A 250V ~ T85 5E4

SCALE FULL

DO NOT SCALE PRINT

TOLERANCES

APPLY TO DESIGN UNITS. CONVERSIONS ARE ONLY FOR REFERENCE. UNLESS NOTED, TOLERANCES ARE ±

	DM.	TOL.	DM.	TOL.
	mm	mm/in	in	mm/in
NO PLACES	X	1/04	X	0.8/03
ONE PLACE	X,X	0.4/018	X,X	0.38/015
TWO PLACES	X,X,X	0.16/009	X,X,X	0.13/006
THREE PLACES	X,X,X,X		X,X,X,X	

DESIGN UNITS SI METRIC US CUSTOMARY

WEIGHT .075 LB

RASTER

FO-52848-A
DRAWN

K P K123 OCT 74 CHECK D J W G NOV 74