

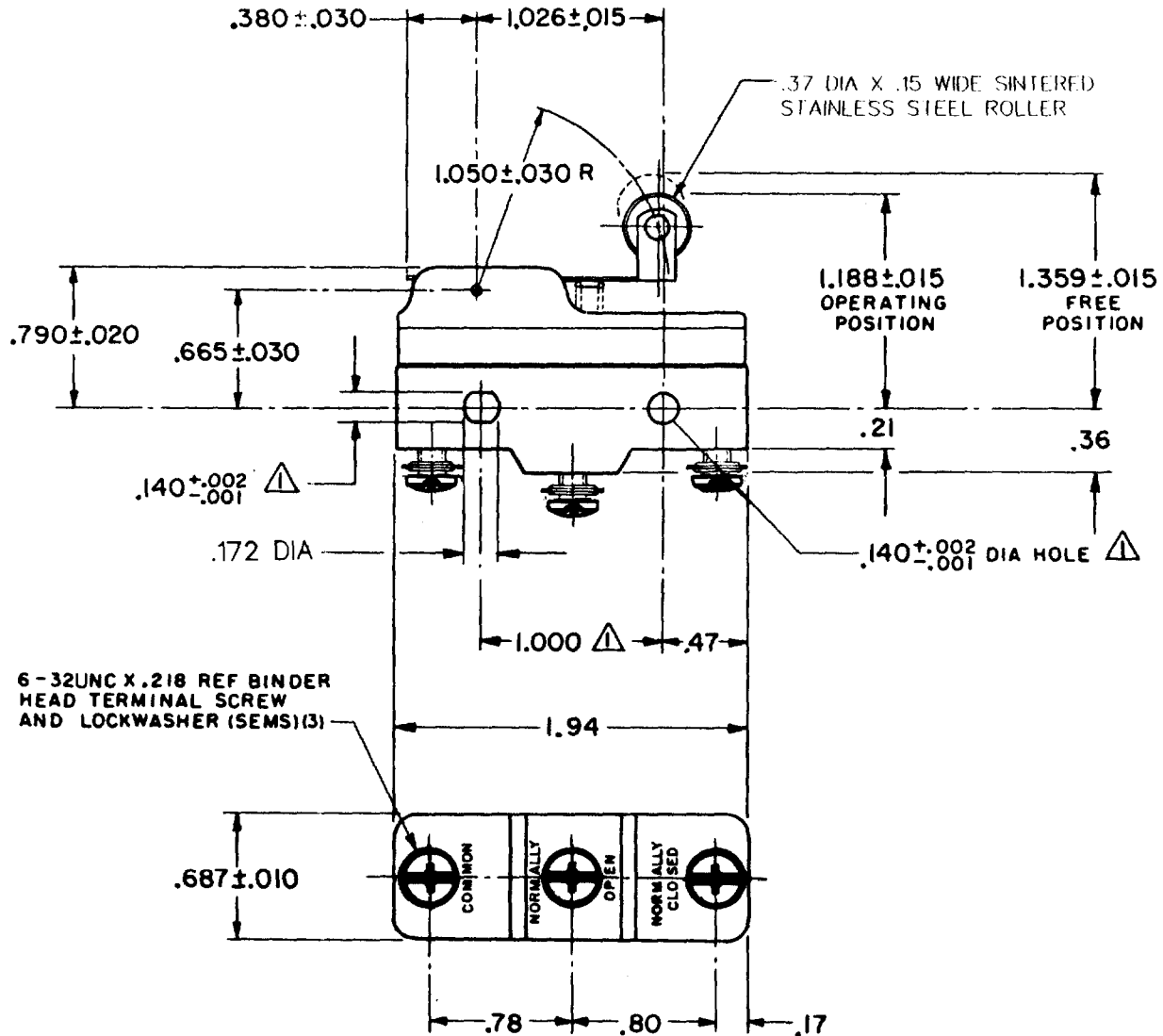
MICRO SWITCH

A DIVISION OF MINNEAPOLIS-HONEYWELL REGULATOR COMPANY
 MINNEAPOLIS, MINN. 55412
 FED. MFR. CODE 91929

SWITCH-BASIC

CATALOG LISTING
BZ-7RWT822

AQJ4500



NOTE
 ▲ MOUNTING HOLES WILL ACCEPT PINS OR SCREWS OF .139 MAX DIA ON 1.000 ± .002 CENTERS

THIS DRAWING COVERS A PROPRIETARY ITEM AND IS THE PROPERTY OF MICRO SWITCH, A DIVISION OF MINNEAPOLIS-HONEYWELL REGULATOR CO. THIS DRAWING IS NOT TO BE COPIED OR USED WITHOUT THE APPROVAL OF MICRO SWITCH.

CHARACTERISTICS	ELECTRICAL DATA		SCALE FULL	
OPERATING FORCE ----- 7 OZ MAX	CONTACT ARRANGEMENT S P D T	BREAK DISTANCE .070 MIN	DO NOT SCALE PRINT	
RELEASE FORCE ----- 1 1/2 OZ MIN	-L96- 15A-125, 250, OR 480 VAC 1/2 A-125 VDC; 1/4 A-250 VDC 1/8 HP-125 VAC; 1/4 HP-250 VAC -L288- -L315- -L306-		UNLESS OTHERWISE SPECIFIED DIMENSIONS ARE IN INCHES	
DIFFERENTIAL TRAVEL ----- .020 - .050			TOLERANCES ARE: ONE PLACE (.0) ±.030 TWO PLACE (.00) ±.015 THREE PLACE (.000) ±.005 ANGLES ±	
OVERTRAVEL ----- .094 MIN			WEIGHT .076 LB	

FORMTEK
 DRAWN GCH 9 APRIL 62
 CHECK DAW 17 APR 62
 ISSUE 14
 DRAWING NUMBER M BZ-7RWT822
 PAGE 1 OF 1
 REVISIONS:
 A CO 16736 B C H 9 APRIL 62
 B CO-59351-D JWB 18 JUL 91
 C CO-70184-6 G J W 16 MAR 92
 D CO-75204-B W L S 1 FEB 94
 E CO-77589 T S M 29 MAR 94
 F C093346 D L T 20 SEP 98
 G 0017582 T S G 06 JAN 06
 REPLACES
 RELEASE NO.