



MICRO SWITCH

FREEPORT ILLINOIS
A DIVISION OF HONEYWELL

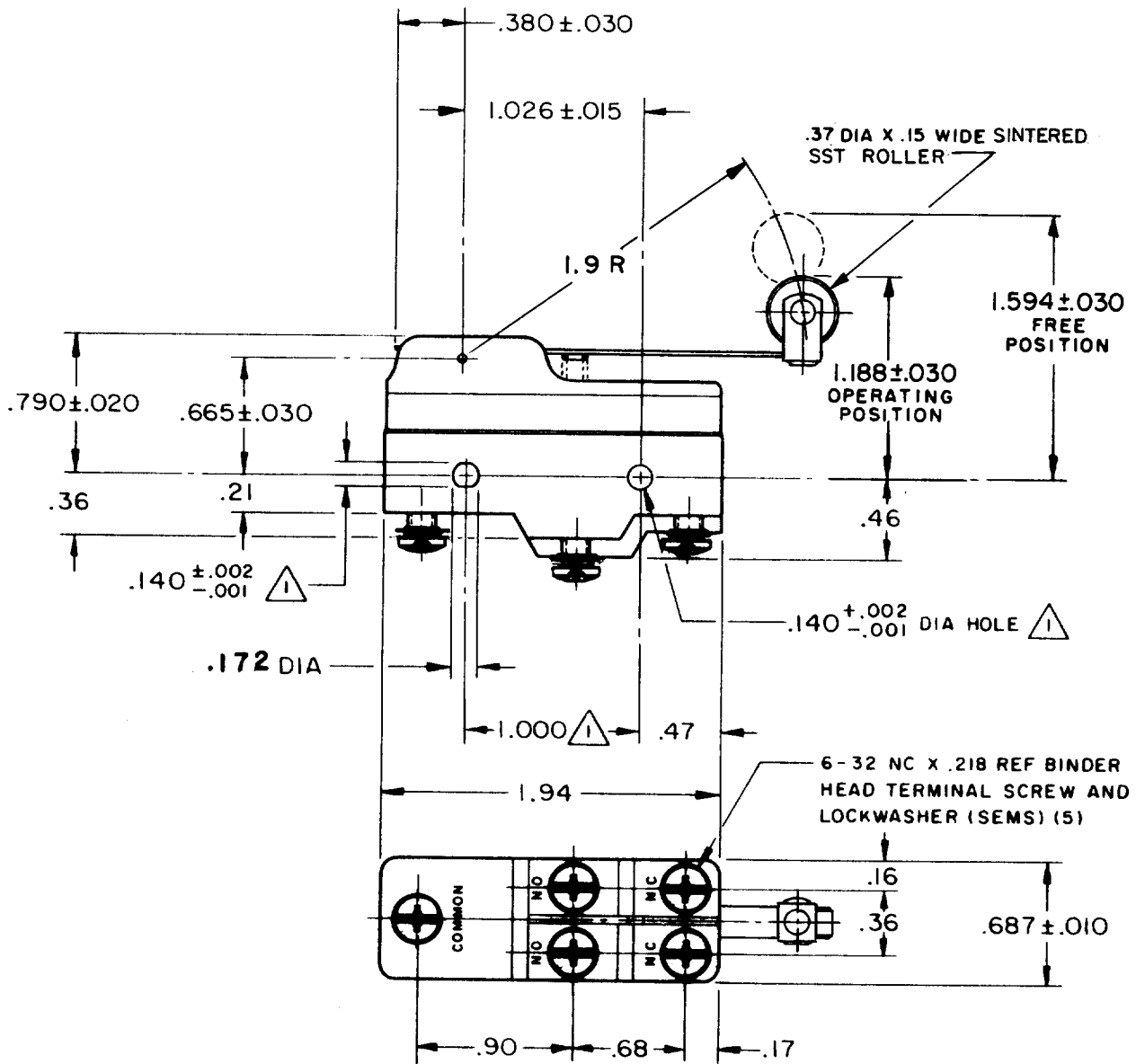
FED. MFG. CODE 91929

SWITCH - BASIC

CATALOG LISTING


BZ-3YWT82

M BZ-3YWT82
 DRAWING NUMBER
 ISSUE
 REVISIONS
 A CO16736
 G C H
 21 DEC 62
 B CO34306
 D J W
 17 JUL 75
 C CO-59351-D
 JWB
 18 JUL 91
 D CO-75204-B
 WJC
 1 FEB 94
 E CO77590
 DLT
 10 JUN 94
 DRAWN
 G C H
 21 DEC 62
 CHECK
 P A W
 5 JAN '63
 CHECK
 5 JAN '63
 REPLACES
 RELEASE NO.



NOTE -
 \triangle MOUNTING HOLES WILL ACCEPT PINS OR SCREWS OF $.139$ MAX DIA ON $1.000 \pm .002$ CENTERS

THIS DRAWING COVERS A PROPRIETARY ITEM AND IS THE PROPERTY OF MICRO SWITCH, A DIVISION OF MINNEAPOLIS-HONEYWELL REGULATOR CO. THIS DRAWING IS NOT TO BE COPIED OR USED WITHOUT THE APPROVAL OF MICRO SWITCH.

CHARACTERISTICS	ELECTRICAL DATA	SCALE FULL
OPERATING FORCE ----- 4 1/2 OZ MAX	CONTACT ARRANGEMENT SINGLE POLE DOUBLE THROW SPLIT CONTACT	DO NOT SCALE PRINT
RELEASE FORCE ----- 3/4 OZ MIN	UNDERWRITERS' LAB. INC. LISTED RATING -L4- 5A-250 VAC	UNLESS OTHERWISE SPECIFIED DIMENSIONS ARE IN INCHES TOLERANCES ARE:
DIFFERENTIAL TRAVEL ----- .015-.075		ONE PLACE (.0) $\pm .030$ TWO PLACE (.00) $\pm .015$ THREE PLACE (.000) $\pm .005$ ANGLES \pm
OVERTRAVEL ----- .156 MIN		WEIGHT .078 LB