

MICRO SWITCH

A DIVISION OF MINNEAPOLIS-HONEYWELL REGULATOR COMPANY
MINNEAPOLIS, MINNESOTA

FED. MFR. CODE 91929

SWITCH - BASIC

CATALOG LISTING

BZ-3RW822T

AQF6500

M BZ-3RW822T

PAGE 1 OF 1

DRAWING NUMBER

ISSUE

12

REPLACES

RELEASE NO.

CHECK

29 AUG 05

RJ

CHECK

11 APR 92

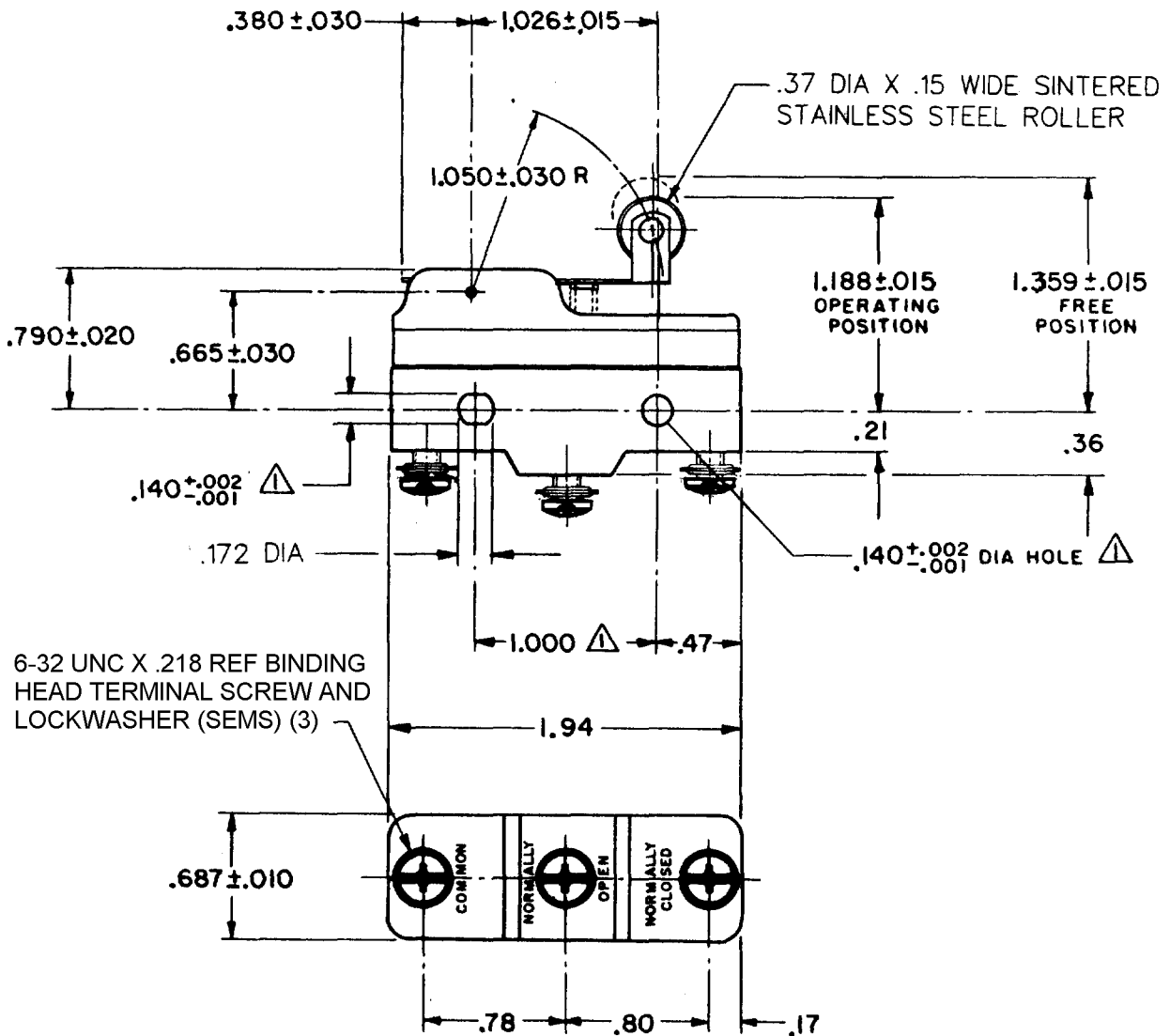
CHECK

9 APRIL 62

DRAWN

RASTOR

FO-50378



6-32 UNC X .218 REF BINDING HEAD TERMINAL SCREW AND LOCKWASHER (SEMS) (3)

NOTE

▲ MOUNTING HOLES WILL ACCEPT PINS OR SCREWS OF .139 MAX DIA ON 1.000 ± .002 CENTERS

THIS DRAWING COVERS A PROPRIETARY ITEM AND IS THE PROPERTY OF MICRO SWITCH, A DIVISION OF MINNEAPOLIS-HONEYWELL REGULATOR CO. THIS DRAWING IS NOT TO BE COPIED OR USED WITHOUT THE APPROVAL OF MICRO SWITCH.

CHARACTERISTICS	ELECTRICAL DATA	SCALE FULL
OPERATING FORCE ----- 6 1/2 OZ MAX	CONTACT ARRANGEMENT S P D T	DO NOT SCALE PRINT
RELEASE FORCE ----- 1 1/2 OZ MIN	-L96- 15 A - 125, 250, OR 480 VAC 1/2 A - 125 VDC ; 1/4 A - 250 VDC 1/8 HP - 125 VAC ; 1/4 HP - 250 VAC -L288- -L306- -L315-	UNLESS OTHERWISE SPECIFIED DIMENSIONS ARE IN INCHES TOLERANCES ARE:
DIFFERENTIAL TRAVEL ----- .007 - .030		ONE PLACE (.0) ± .030 TWO PLACE (.00) ± .015 THREE PLACE (.000) ± .008 ANGLES ±
OVERTRAVEL ----- .094 MIN		CE EN05 EC 16A 250V ~ T85 5E4
		WEIGHT .076 LB