

MICRO SWITCH

FREEMONT ILLINOIS, U.S.A
A DIVISION OF HONEYWELL
FED. MFG. CODE 91929

SWITCH-BASIC

CATALOG LISTING

BZ-2RW855 -A2-S

BZ-2RW855-A2-S

PAGE 1 OF 1

REPLACES

RELEASE NO. PR-6725

DRAWING NUMBER

6

ISSUE

CHECK

REVISIONS

A	CO 39621
T M M 16 DEC 77	
B	CO67209
J A P 3 MAY 90	
C	CO- 73287-J
J A L 22 NOV 93	
D	CO- 77588
K D R 29 MAR 94	
E	CO93346
D L T 14 SEP 98	

CHECK

OCT 77

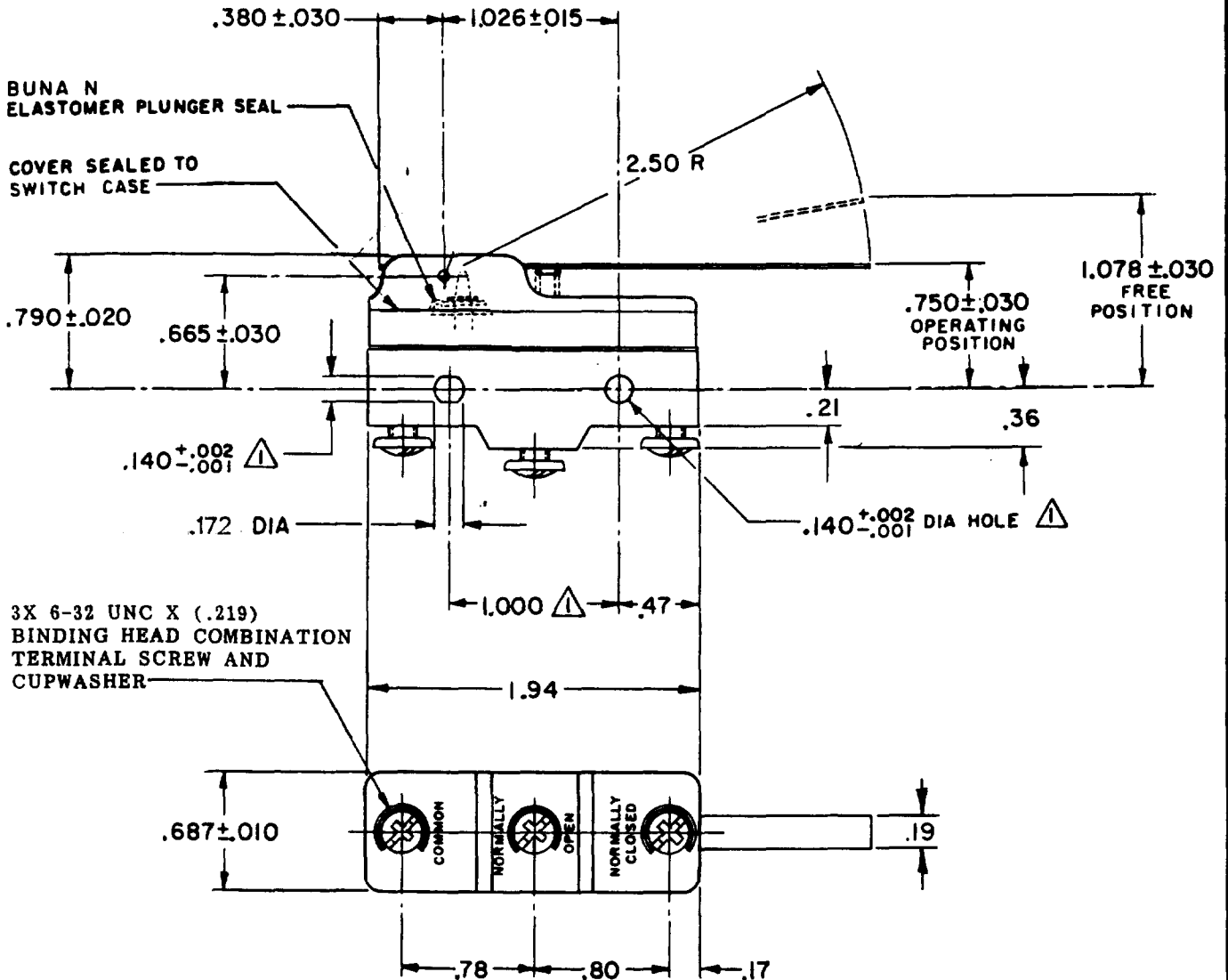
OCT 77

OCT 77

OCT 77

OCT 77

OCT 77

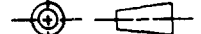


NOTES

- 1 MOUNTING HOLES WILL ACCEPT PINS OR SCREWS OF .139 MAX DIA ON 1.000 ± .002 CENTERS
- 2 - SEALED CONSTRUCTION PROVIDES SPLASH RESISTANCE

THIS DRAWING COVERS A PROPRIETARY ITEM AND IS THE PROPERTY OF MICRO SWITCH, A DIVISION OF HONEYWELL. THIS DRAWING IS NOT TO BE COPIED OR USED WITHOUT THE APPROVAL OF MICRO SWITCH.

THIRD ANGLE PROJECTION



CHARACTERISTICS

OPERATING FORCE --- 2 1/2 OZ MAX
RELEASE FORCE --- 1/2 OZ MIN
DIFFERENTIAL TRAVEL --- .007-.050
OVERTRAVEL --- .219 MIN

ELECTRICAL DATA

CONTACT ARRANGEMENT
S P D T

L96
15A 125, 250 OR 480 VAC
1/8 HP 125 VAC, 1/4 HP 250 VAC
1/2A 125 VDC, 1/4A 250 VDC

L288
L299
L306



16A 250V ~ T85 5E4

SCALE FULL

DO NOT SCALE PRINT

APPLY TO DESIGN LIMITS. CONVERSIONS ARE ONLY FOR REFERENCE. UNLESS NOTED, TOLERANCES ARE ±

	DIM.	TOL.	DIM.	TOL.
	mm	mm/in	in	mm/in
NO PLACES	X	17.04		
ONE PLACE	X, X	0.47/016	X, X	0.87/00
TWO PLACES	X, XX	0.167/006	X, XX	0.387/015
THREE PLACES	X, XXX	0.167/006	X, XXX	0.137/005
ANGLES				

DESIGN UNITS SI METRIC US CUSTOMARY

WEIGHT .076 LB

FORMTEK

FO-52848-A

DRAWN

OCT 77