

MICRO SWITCH

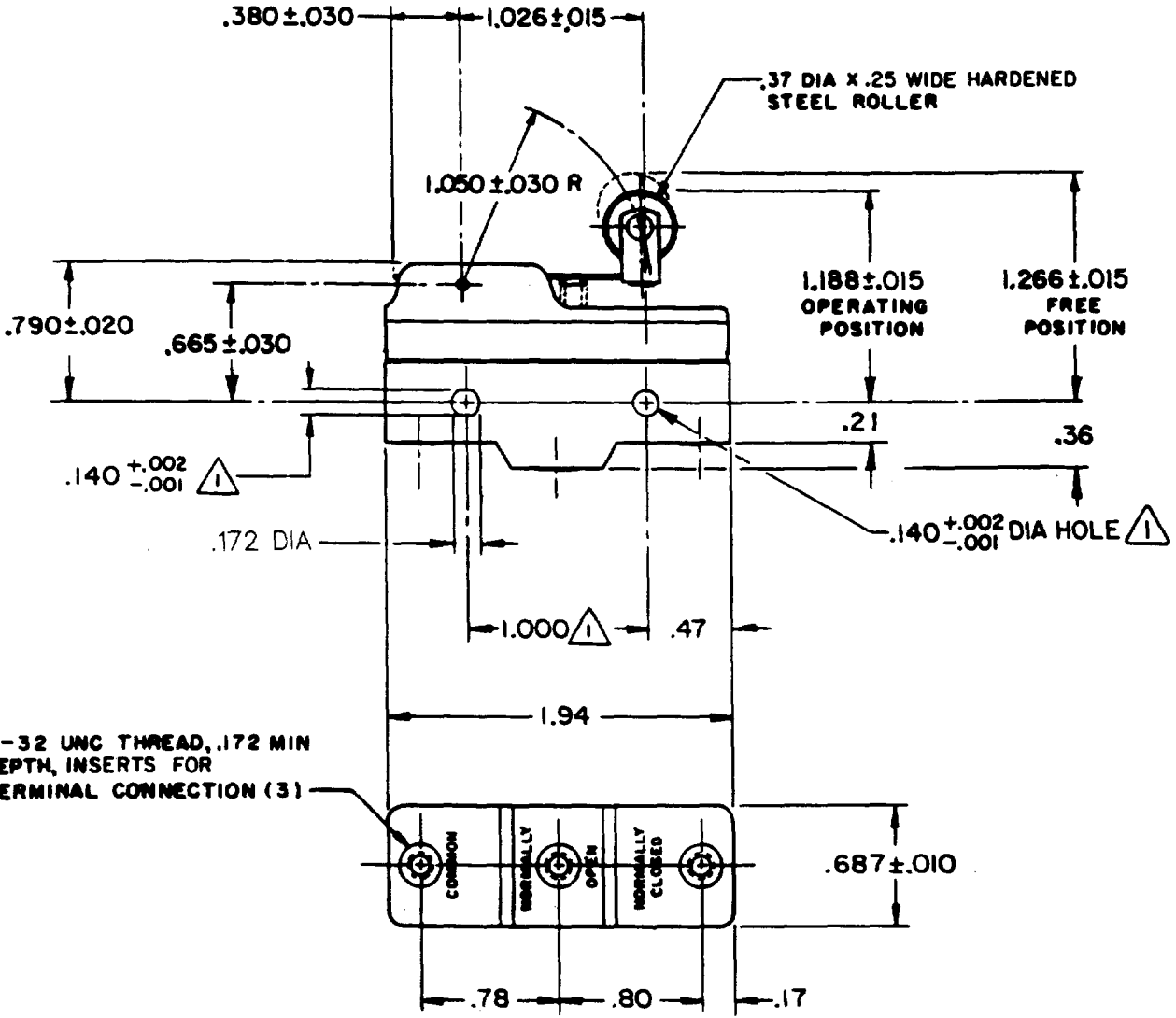
FREEMONT ILLINOIS, U.S.A.
A DIVISION OF HONEYWELL
FED. MFG. CODE 9 1929

SWITCH-BASIC

CATALOG LISTING
BZ-2RW82291-A2

APT8980

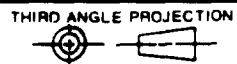
M BZ-2RW82291-A2
 DRAWING NUMBER
 ISSUE 6
 REVISIONS
 A CO 44126 26 APR 78
 B CO 73287-J 22 NOV 93
 C CO 77589 29 MAR 94
 D CO93346
 E 0017579
 KRB 08DEC05
 FORMTEK FO-52848-A
 DRAWN
 J A L 25 FEB 76
 CHECK C E B
 26 FEB 76
 CHECK C E B
 26 FEB 76
 CHECK R J
 08DEC05
 CHECK
 PR-5688
 PAGE 1 OF 1
 REPLACES



6-32 UNC THREAD, .172 MIN DEPTH, INSERTS FOR TERMINAL CONNECTION (3)

NOTE
 MOUNTING HOLES WILL ACCEPT PINS OR SCREWS OF .139 MAX DIA ON 1.000 ± .002 CENTERS
 2 - 6-32 UNC X .219 REF BINDING HEAD COMBINATION TERMINAL SCREW (3), AND CUPWASHER (3), FURNISHED UNASSEMBLED

THIS DRAWING COVERS A PROPRIETARY ITEM AND IS THE PROPERTY OF MICRO SWITCH, A DIVISION OF HONEYWELL. THIS DRAWING IS NOT TO BE COPIED OR USED WITHOUT THE APPROVAL OF MICRO SWITCH.



CHARACTERISTICS

OPERATING FORCE ----- 6 OZ MAX
 RELEASE FORCE ----- 1 1/2 OZ MIN
 DIFFERENTIAL TRAVEL ----- .003-.020
 OVERTRAVEL ----- .094 MIN

ELECTRICAL DATA

CONTACT ARRANGEMENT
S P D T

-L96- 15 A - 125, 250, OR 480 VAC
 1/2 A - 125 VDC; 1/4 A - 250 VDC
 1/8 HP - 125 VAC; 1/4 HP - 250 VAC



16A 250V ~ T85 5E4

SCALE FULL

DO NOT SCALE PRINT

TOLERANCES
 APPLY TO DESIGN UNITS. CONVERSIONS ARE ONLY FOR REFERENCE. UNLESS NOTED, TOLERANCES ARE ±

	DES. UNITS	TOL.	DES. UNITS	TOL.
	in	mm/in	in	mm/in
NO PLACES	X	1/.04		
ONE PLACE	X, X	0.42/.016	X, X	0.25/.010
TWO PLACES	X, XX	0.14/.005	X, XX	0.25/.010
THREE PLACES	X, XXX		X, XXX	0.13/.005

DESIGN UNITS SI METRIC US CUSTOMARY

WEIGHT .076 LB