

# MICRO SWITCH

A DIVISION OF MINNEAPOLIS-HONEYWELL REGULATOR COMPANY  
FREEPORT, MINNESOTA

FED. MFR. CODE 91929

# SWITCH - BASIC

CATALOG LISTING  
BZ-2RW80288-A2

APS1528

X115400-BZ

BZ-2RW80288-A2

PAGE 1 OF 1

RELEASE NO. ECO-0005270 REPLACES

**M**

DRAWING NUMBER

**C**

ISSUE

29 AUG 05

RJ

CHECK

**REVISIONS**

A 0006725

DVM  
JUL 04

B 0015138

SPK  
29 AUG 05

JUL 04

AK

CHECK

05/05/04

AK

CHECK

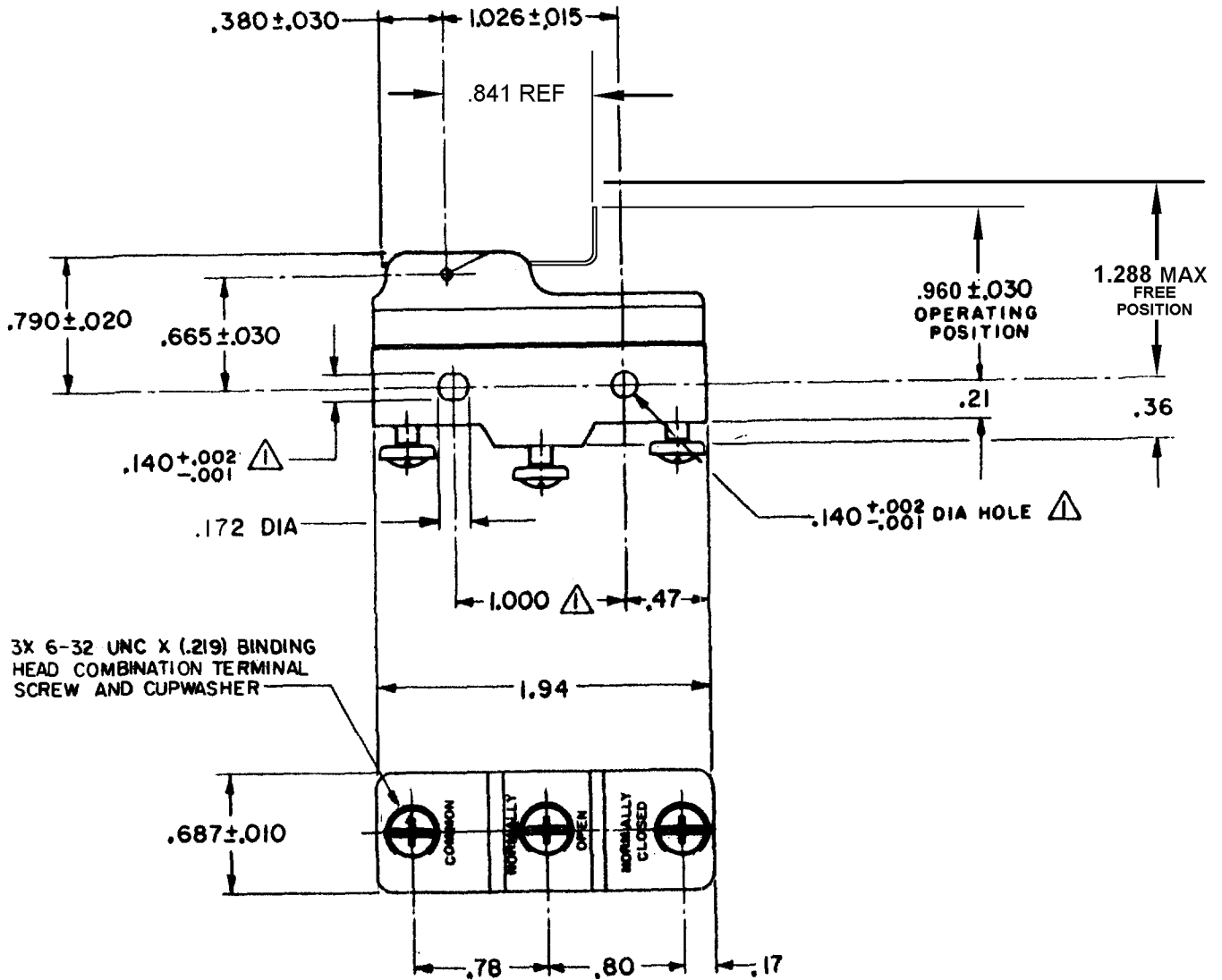
05/05/04

AK

CHECK

FORMTEK

FO-50378



3X 6-32 UNC X (.219) BINDING HEAD COMBINATION TERMINAL SCREW AND CUPWASHER

NOTE  
MOUNTING HOLES WILL ACCEPT PINS OR SCREWS OF .139 MAX DIA ON 1.000 ± .002 CENTERS

THIS DRAWING COVERS A PROPRIETARY ITEM AND IS THE PROPERTY OF MICRO SWITCH, A DIVISION OF MINNEAPOLIS-HONEYWELL REGULATOR CO. THIS DRAWING IS NOT TO BE COPIED OR USED WITHOUT THE APPROVAL OF MICRO SWITCH.

**CHARACTERISTICS**

OPERATING FORCE ----- 3 OZ MAX  
RELEASE FORCE ----- 1/4 OZ MIN  
DIFFERENTIAL TRAVEL ----- .001 - .020  
OVERTRAVEL ----- .100 MIN

**ELECTRICAL DATA**

CONTACT ARRANGEMENT  
S P D T

15A - 125, 250 OR 480 VAC, 2A - 600 VAC  
-L74- 1/8HP - 125 VAC; 1/4HP - 250 VAC  
1/2A - 125 VDC; 1/4A - 250 VDC

-L288-  
-L306-  
-L315-



EN05  
EC



16A 250V ~ T85 5E4

SCALE FULL

DO NOT SCALE PRINT

UNLESS OTHERWISE SPECIFIED

DIMENSIONS ARE IN INCHES

**TOLERANCES ARE:**

ONE PLACE (.0) ± .030  
TWO PLACE (.00) ± .015  
THREE PLACE (.000) ± .005  
ANGLES ±

WEIGHT .073 LB