



MICRO SWITCH

FREEPORT, ILLINOIS, U.S.A.
A DIVISION OF HONEYWELL

FED. MFG. CODE 91929

SWITCH - BASIC

CATALOG LISTING

BZ-2RS

DRAWING NUMBER
BZ-2RS
PAGE 1 OF 1

ISSUE
M
16

REVISIONS

A	C017410	GCH	11 APRIL 83
B	C044156	SJS	20 APR 78
C	C046304	JAP	13 OCT 79
D	CO-58037	SMA	1 OCT 85
E	CO-78874	DLT	18 NOV 94
F	C093346	DLT	11 SEP 98
G	CO-94212-J	JJA	11 OCT 99

REPLACES

RELEASE NO.

CHECK

CHECK

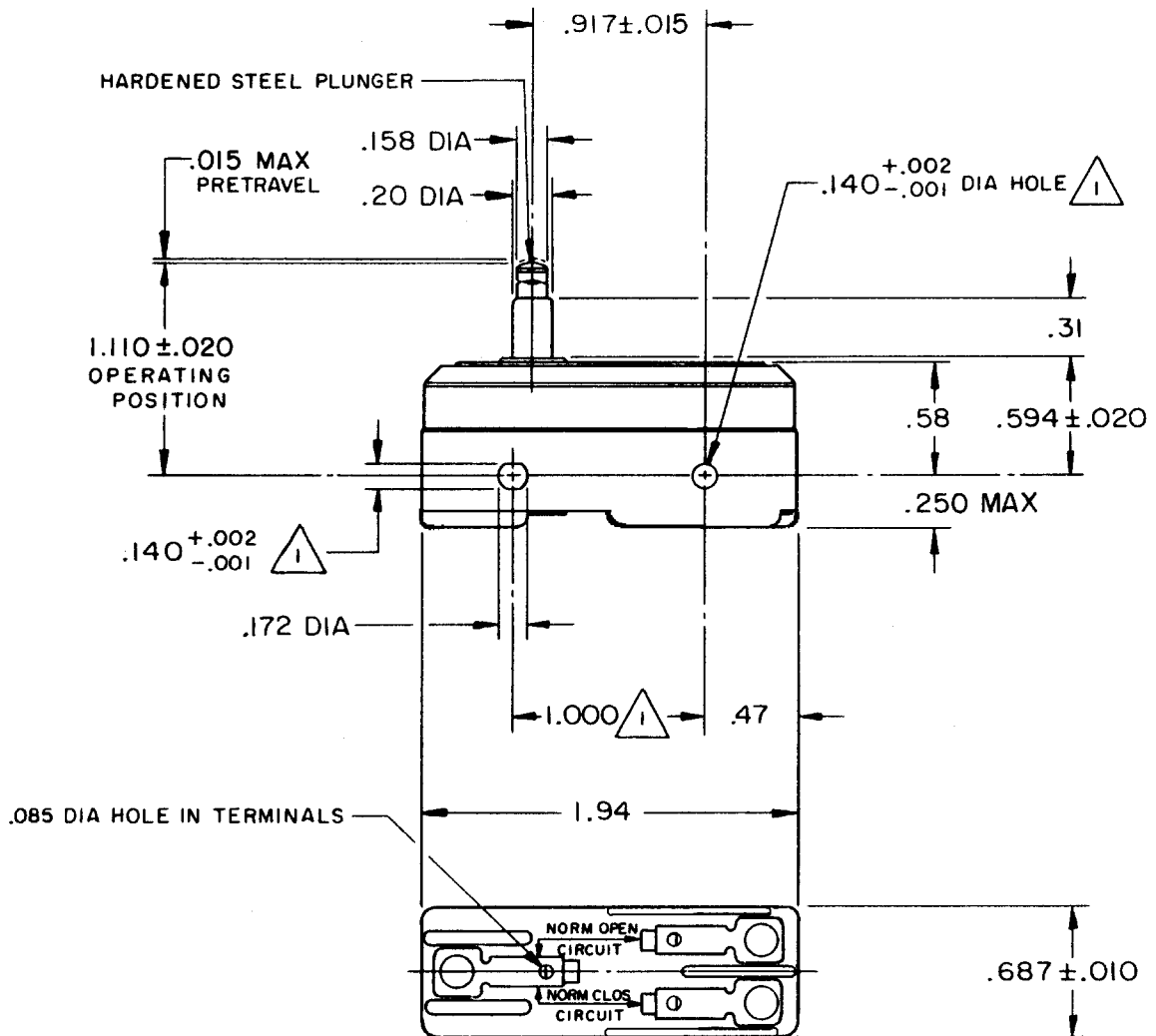
L.S.D 22 APR 63

CHECK

GCH 11 APRIL 63

FORMTEK
FO-50378

DRAWN



NOTE
 MOUNTING HOLES WILL ACCEPT PINS OR SCREWS
 OF .139 MAX DIA ON 1.000±.002 CENTERS

THIS DRAWING COVERS A PROPRIETARY ITEM AND IS THE PROPERTY OF MICRO SWITCH, A DIVISION OF MINNEAPOLIS-HONEYWELL REGULATOR CO. THIS DRAWING IS NOT TO BE COPIED OR USED WITHOUT THE APPROVAL OF MICRO SWITCH.

CHARACTERISTICS	
OPERATING FORCE	9 - 13 OZ
RELEASE FORCE	4 OZ MIN
DIFFERENTIAL TRAVEL	.0004 - .0020
OVERTRAVEL	.060 MIN

ELECTRICAL DATA	
CONTACT ARRANGEMENT S P D T	
UL LISTED-FILE E12252 CODE L96 15A-125, 250 OR 480 VAC 1/8 HP-125 VAC; 1/4 HP-250 VAC 1/2 A-125 VDC; 1/4 A-250 VDC	
L288	CE
L299	ⓓ
L306	Ⓢ
16A 250V ~ T85 5E4	

SCALE FULL		
DO NOT SCALE PRINT		
UNLESS OTHERWISE NOTED DIMENSIONS ARE IN INCHES		
TOLERANCES ARE:		
ONE PLACE	(.0)	±.030
TWO PLACE	(.00)	±.015
THREE PLACE	(.000)	±.005
ANGLES		±
WEIGHT .050 LB		