

MICRO SWITCH

FREERPORT ILLINOIS, U.S.A
A DIVISION OF HONEYWELL

FED. MFG. CODE 91929

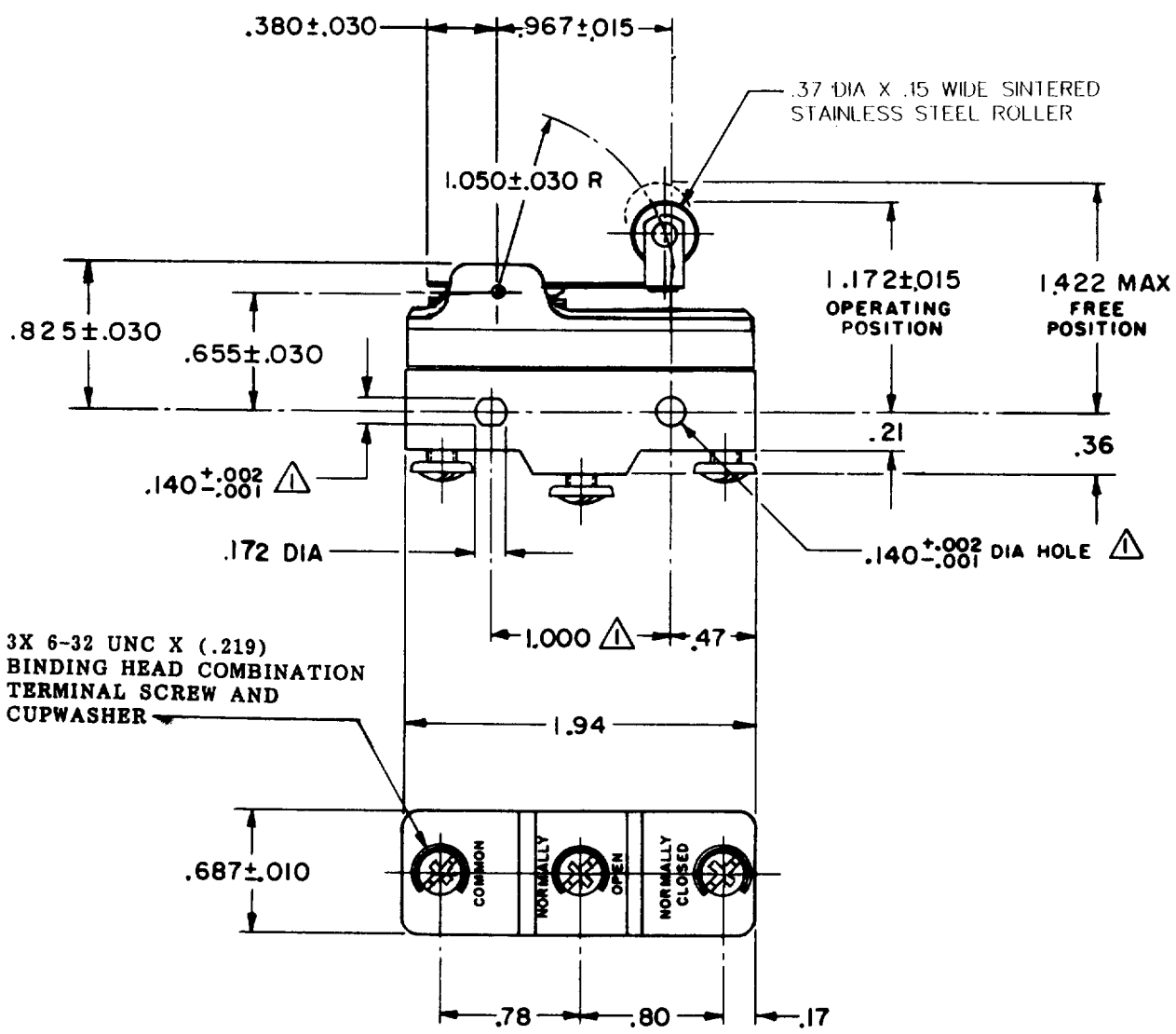
SWITCH-BASIC

CATALOG LISTING

BE-2RV22-A2

5

BE-2RV22-A2
M
 DRAWING NUMBER
 ISSUE
 REVISIONS
 A CO30432
 R E R
 8 MAY 72
 B CO
 32144
 GLM
 27 JUL 73
 C CO36627
 C J H
 8 APR 76
 D CO
 58782
 W J M
 25 JAN 86
 E CO
 701848
 S J W
 28 MAR 92
 F CO
 J J O
 1 MAY 93
 G CO
 73287-J
 J A L
 22 NOV 93
 H CO
 752048
 DAW
 1 FEB 94
 J CO
 77390
 S A D
 9 JUN 94
 CHECK
 PR-678
 RELEASE NO.
 CHECK
 29 APR 69
 DCS
 CHECK
 29 APR 69
 M B S
 DRAWN
 FO-50378-1A



3X 6-32 UNC X (.219)
BINDING HEAD COMBINATION
TERMINAL SCREW AND
CUPWASHER

NOTE -
 MOUNTING HOLES WILL ACCEPT PINS OR SCREWS
 OF .139 MAX DIA ON 1.000 ± .002 CENTERS

THIS DRAWING COVERS A PROPRIETARY ITEM AND IS THE PROPERTY OF MICRO SWITCH, A DIVISION OF HONEYWELL. THIS DRAWING IS NOT TO BE COPIED OR USED WITHOUT THE APPROVAL OF MICRO SWITCH.

CHARACTERISTICS	ELECTRICAL DATA	SCALE FULL
OPERATING FORCE ——— 6 OZ MAX	CONTACT ARRANGEMENT S P D T	DO NOT SCALE PRINT
RELEASE FORCE ——— 1 1/2 OZ MIN	25-A-125, 250, 480 VAC 1 HP-125 VAC; 2 HP-250 OR 480 VAC; PILOT DUTY 750 VA-480 VAC, MAX; 60/75°C (Cu)	UNLESS OTHERWISE NOTED
PRETRAVEL ——— .250 MAX		DIMENSIONS ARE IN INCHES
DIFFERENTIAL TRAVEL ——— .045 MAX		TOLERANCES ARE:
OVERTRAVEL ——— .030 MIN		ONE PLACE (.9) ±.030 TWO PLACE (.00) ±.015 THREE PLACE (.000) ±.008 ANGLES ±.008
		WEIGHT