

MICRO SWITCH

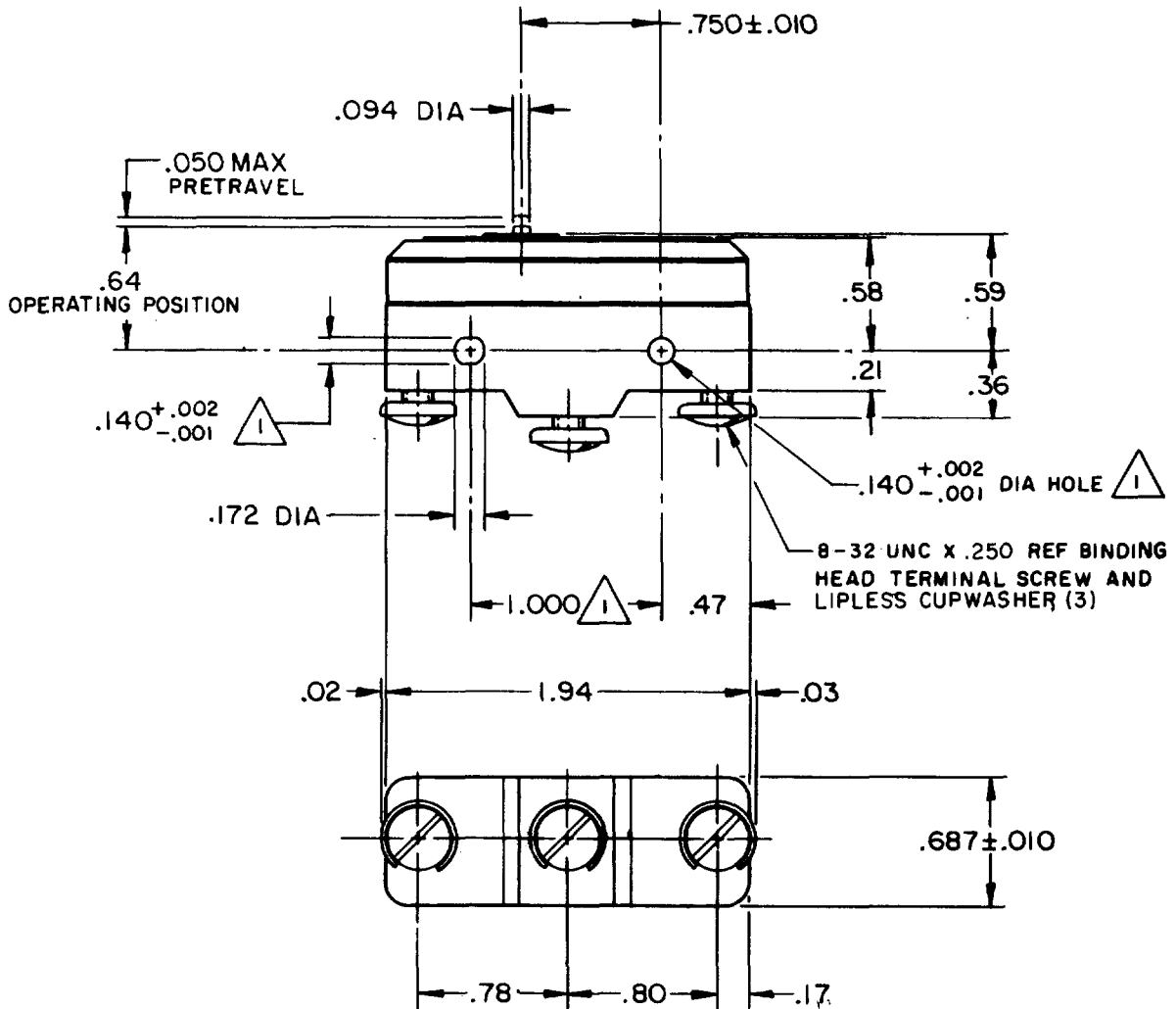
FREEPORT ILLINOIS, U.S.A
A DIVISION OF HONEYWELL
FED. MFG. CODE 91929

SWITCH - BASIC

CATALOG LISTING

BA-1R2416-A42

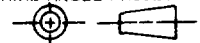
ABE 9750



- NOTES**
- 1 MOUNTING HOLES WILL ACCEPT PINS OR SCREWS OF .139 MAX DIA ON 1.000 ± .002 CENTERS
 - 2 SWITCH WILL WITHSTAND TEMPERATURE OF 250° F

THIS DRAWING COVERS A PROPRIETARY ITEM AND IS THE PROPERTY OF MICRO SWITCH, A DIVISION OF HONEYWELL. THIS DRAWING IS NOT TO BE COPIED OR USED WITHOUT THE APPROVAL OF MICRO SWITCH.

THIRD ANGLE PROJECTION



CHARACTERISTICS

OPERATING FORCE ----- 13-19 OZ
DIFFERENTIAL FORCE ----- 1 1/2-6 OZ
RELEASE FORCE ----- 10 OZ MIN

DIFFERENTIAL TRAVEL ---- .004-.006
OVERTRAVEL ----- .010 MIN

ELECTRICAL DATA

CONTACT ARRANGEMENT
S P D T

CODE L33 20A-125, 250 OR 480 VAC
1HP-125 VAC; 2HP-250 VAC
0.3A-125 VDC; 0.15A-250 VDC

L288
L308
L310
L315

CE

20(3)A 250V ~ T85 5E4

SCALE FULL

DO NOT SCALE PRINT

TOLERANCES

APPLY TO DESIGN UNITS. CONVERSIONS ARE ONLY FOR REFERENCE. UNLESS NOTED, TOLERANCES ARE ±

DIM.	TOL.		DIM.	TOL.	
	mm	mm/in		in	mm/in
NO PLACES	X	1/.04	X	X	0.07/03
ONE PLACE	X, X	0.4/.018	X, X	X, X	0.38/.015
TWO PLACES	X, XX	0.16/.008	X, XX	X, XX	0.13/.005
THREE PLACES	X, XXX		X, XXX		
ANGLES					

DESIGN UNITS METRIC US CUSTOMARY

WEIGHT .063 LB

BA-1R2416-A42
 PAGE 1 OF 1
 DRAWING NUMBER
 ISSUE 5
 REVISIONS
 A CO-54090 17 FEB 06
 B CO-77591 22 JUN 94
 C CO93346
 DLT 27 AUG 98
 D 0018388
 TGP 17 FEB 06
 E 0033746
 JA 12SEP07
 KAG 19 MAY 82
 CEB 25 MAY 82
 CHECK CEB
 RASTER
 FO-52848-A
 DRAWN

REPLACES X71570-BA
 RELEASE NO. PR-11226
 12SEP07
 PSR
 CHECK
 17 FEB 06
 RJ
 CHECK
 25 MAY 82
 CHECK