

MICRO SWITCH

A DIVISION OF MINNEAPOLIS-HONEYWELL REGULATOR COMPANY
MINNEAPOLIS, MINNESOTA
FED. MFR. CODE 91929

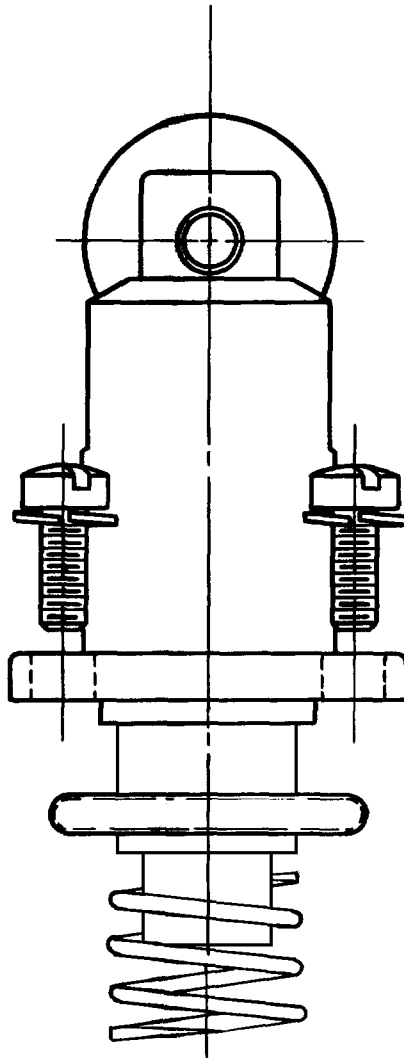
PACKET

CATALOG LISTING

9PA33 ★

INCLUDED COMPONENTS LIST:

ITEM	PART NO.	DESCRIPTION	QTY
1	LS-10683	ROLLER	1
2	BF-10112	PIN	1
3	LS-11056	PLUNGER	1
4	PD-10009	SEAL	1
5	LS-11058	BUSHING	1
6	LS-10122	SEAL	1
7	LS-10698	SCREW	4
8	BF-10174	SPRING	1
9	LS-11063	PLUNGER	1



NOTE:
1 - PARTS FURNISHED UNASSEMBLED IN BULK AS A PACKET.

THIS DRAWING COVERS A PROPRIETARY ITEM AND IS THE PROPERTY OF MICRO SWITCH, A DIVISION OF HONEYWELL. THIS DRAWING IS NOT TO BE COPIED OR USED WITHOUT THE APPROVAL OF MICRO SWITCH.

CHARACTERISTICS

ELECTRICAL DATA

SCALE NONE

CONTACT ARRANGEMENT

BREAK DISTANCE

DO NOT SCALE PRINT

UNLESS OTHERWISE SPECIFIED

DIMENSIONS ARE IN INCHES

TOLERANCES ARE:

ONE PLACE	(.0)	±.030
TWO PLACE	(.00)	±.015
THREE PLACE	(.000)	±.008
ANGLES		±

WEIGHT

9PA33

M

DRAWING NUMBER

X

X

ISSUE

4

REPLACES

RELEASE NO. SR 7340

29JUL10

CMH

CHECK

24 FEB. 58

CNT

26 FEB. 58

GFH

CHECK

21 FEB. 58

21 FEB. 58

21 FEB. 58

21 FEB. 58

21 FEB. 58

21 FEB. 58

21 FEB. 58

21 FEB. 58

RASTER
D-80378

DRAWN

21 FEB. 58