

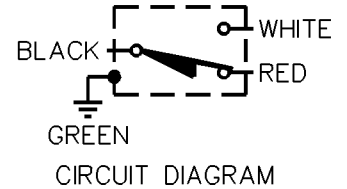
MICRO SWITCH
a Honeywell Division

FED. MFG. CODE 91929

**MINIATURE PRECISION
LIMIT SWITCH**

CATALOG LISTING

914CE18-Q



914CE18-Q

M

DRAWING
NUMBER

1

ISSUE

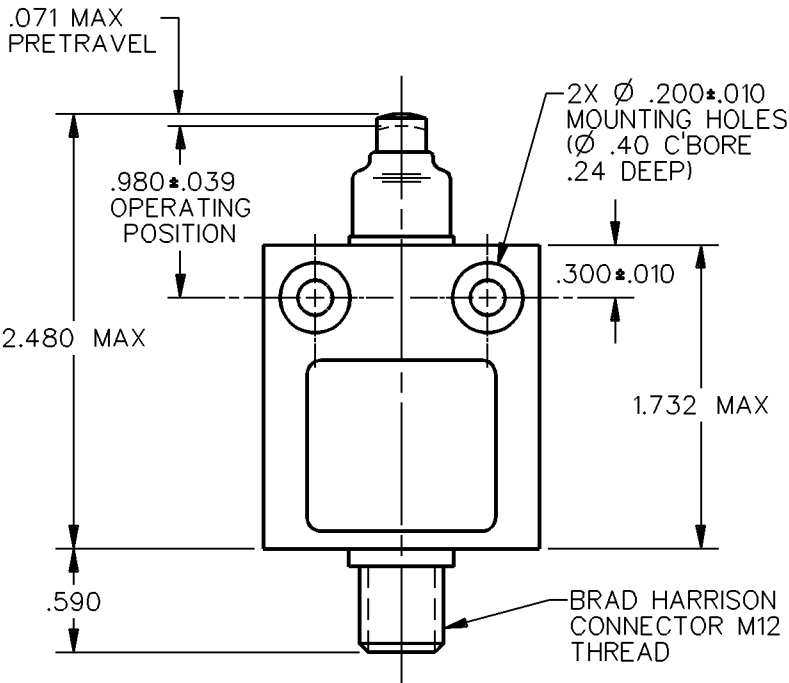
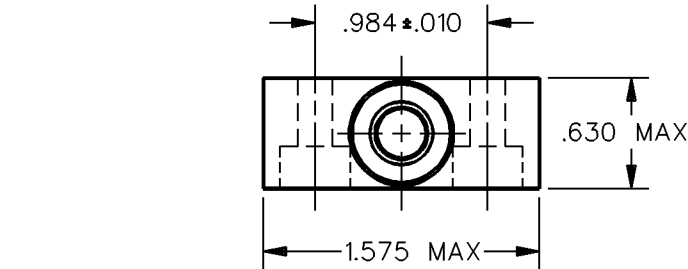
REPLACES

RELEASE NO. CO-69061

CHECK

REVISIONS

CHECK



Ø.280 STAINLESS
STEEL PLUNGER

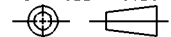
NEOPRENE
SEAL

NOTES
1 - ZINC HOUSING FINISHED WITH GRAY PAINT

ANSI Y14.5M-1982 APPLIES

THIS DRAWING COVERS A PROPRIETARY ITEM AND IS THE PROPERTY OF MICRO SWITCH, A DIVISION OF HONEYWELL. THIS DRAWING IS NOT TO BE COPIED OR USED WITHOUT THE APPROVAL OF MICRO SWITCH.

THIRD ANGLE PROJECTION



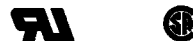
CHARACTERISTICS

OPERATING FORCE — — — — 5 LB MAX
DIFFERENTIAL TRAVEL — — — .004 MAX
OVERTRAVEL — — — — — .118 MIN

ELECTRICAL DATA

CONTACT ARRANGEMENT
S P D T

5A - 250 VAC
1/10HP - 125 OR 250 VAC



SCALE FULL

DO NOT
SCALE PRINT

**UNLESS OTHERWISE SPECIFIED
TOLERANCES ARE**

ONE PLACE (.0)	±.030
TWO PLACE (.00)	±.015
THREE PLACE (.000)	±.005
ANGLES	±

WEIGHT

DDM/CAD

DRAWN

S A V 11 OCT 91