

# MICRO SWITCH

A DIVISION OF MILWAUKEE-ROCKWELL MANUFACTURING COMPANY  
 MILWAUKEE, WISCONSIN  
 FED. MFR. CODE 91929

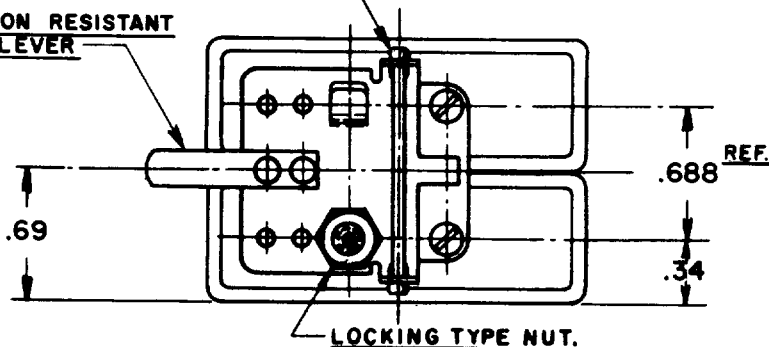
# SWITCH - BASIC

CATALOG LISTING

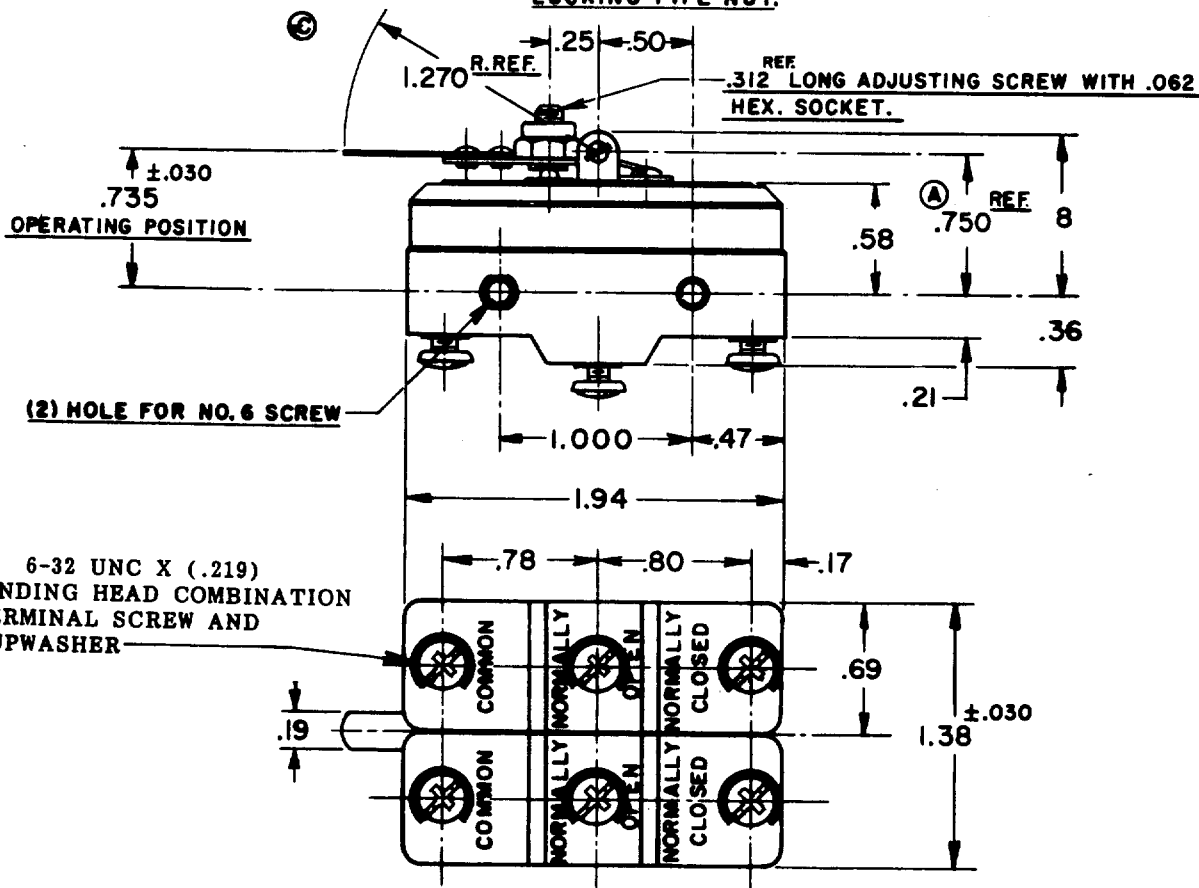
## 6AS25

CORROSION RESISTANT  
 STEEL LEVER

SHAFT ENDS DO NOT EXTEND  
 BEYOND SIDES OF SWITCH.



LOCKING TYPE NUT.



6X 6-32 UNC X (.219)  
 BINDING HEAD COMBINATION  
 TERMINAL SCREW AND  
 CUPWASHER

**NOTE -**

1- ADJUSTING SCREW IS PROVIDED TO ADJUST OPERATING POSITIONS FOR  
 SIMULTANEOUS OR SEQUENCE OPERATION.

THIS DRAWING COVERS A PROPRIETARY ITEM AND IS THE PROPERTY OF MICRO SWITCH, A DIVISION OF  
 HONEYWELL. THIS DRAWING IS NOT TO BE COPIED OR USED WITHOUT THE APPROVAL OF MICRO SWITCH.

### CHARACTERISTICS

OPERATING FORCE-----14 OZ. MAX.

RELEASE FORCE-----4 OZ. MIN.

OVERTRAVEL-----.040 MIN.

### ELECTRICAL DATA

CONTACT ARRANGEMENT  
 (2) S.P.D.T.

BREAK DISTANCE  
 (2).020 MIN.

UNDERWRITERS' LAB. INC. LISTED RATING

-L23-

20 A-125, 250 OR 400 VAC  
 10 A-125 VAC "L"  
 1 HP-125 VAC, 2 HP-250 VAC  
 1/2 A-125 VDC, 1/4 A-250 VDC

SCALE-----FULL

DO NOT SCALE PRINT

UNLESS OTHERWISE  
 SPECIFIED  
 DIMENSIONS ARE IN INCHES  
**TOLERANCES ARE:**  
 ONE PLACE (.0) ±.030  
 TWO PLACE (.00) ±.015  
 THREE PLACE (.000) ±.008  
 ANGLES ±

WEIGHT

15  
 6AS25  
 M  
 DRAWING NUMBER  
 26  
 ISSUE  
 2  
 REVISIONS  
 A CO11387 R.E.R. 3 APR. 57  
 B CORR 11 DEC 59  
 C CO14153 L.S.D. 23 DEC 59  
 D CO16008 R.E.R. 23 JUN 61  
 E CO-73287-J J.A.L. 22 NOV 63  
 16, FEB. '56  
 D.A.W. DRAWN  
 16, FEB. '56  
 GCH CHECK  
 22, FEB. '56  
 GCH CHECK  
 22, FEB. '56  
 CANT 21 FEB. '56  
 CHECK  
 S.R. 5060  
 RELEASE NO.