

# MICRO SWITCH

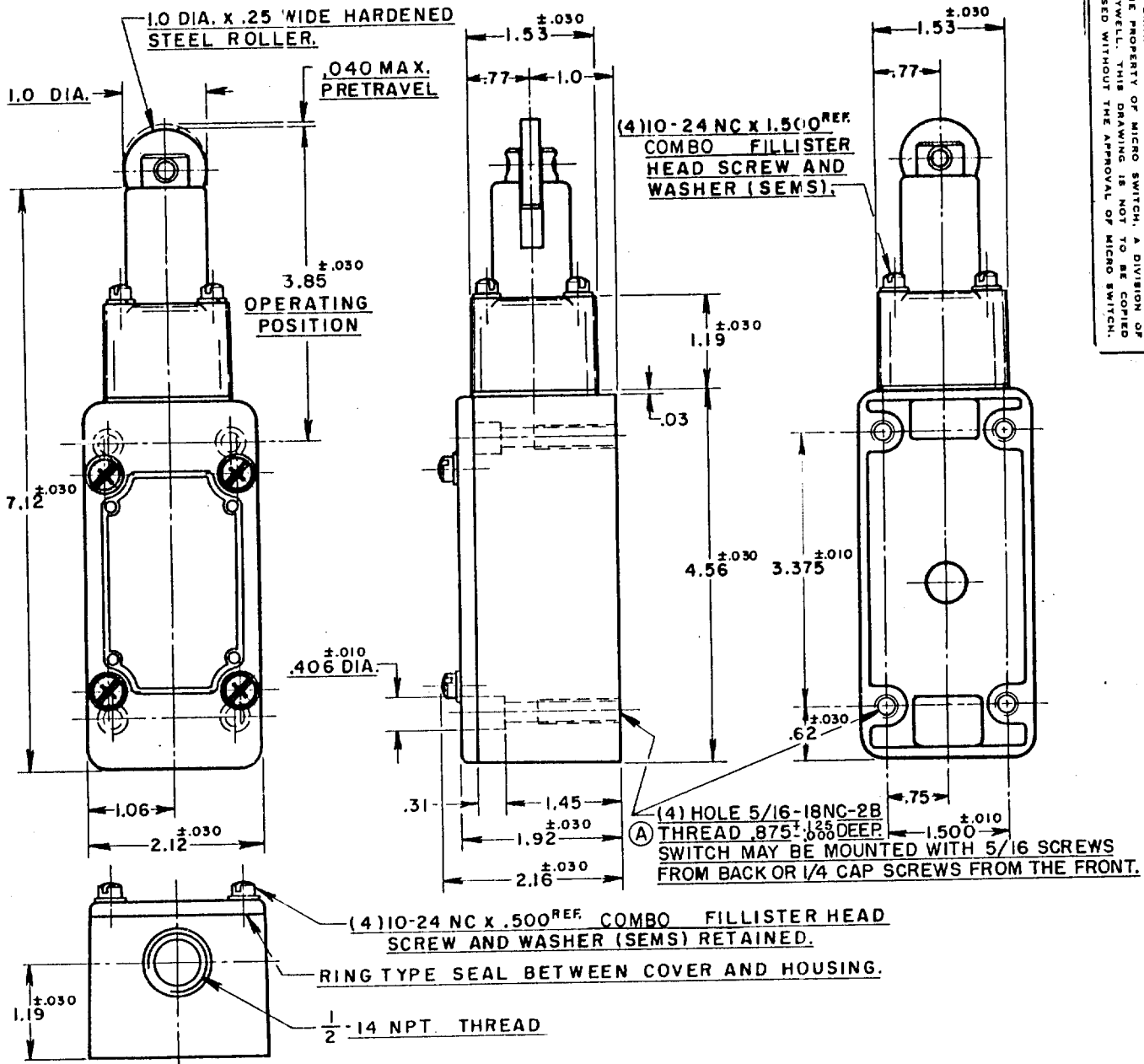
A DIVISION OF MINNEAPOLIS-HONEYWELL REGULATOR COMPANY  
PRINCETON, ILLINOIS

FED. MFR. CODE 91929

## SWITCH - ENCLOSED

5 ML7

THIS DRAWING COVERS A PROPRIETARY ITEM AND IS THE PROPERTY OF MICRO SWITCH, A DIVISION OF HONEYWELL. THIS DRAWING IS NOT TO BE COPIED OR USED WITHOUT THE APPROVAL OF MICRO SWITCH.



**NOTE -**

- 1-ROLLER ASSEMBLY MAY BE RE-ASSEMBLED 90° FROM POSITION SHOWN.
- 2-IT IS ESSENTIAL TO PREVENT ENTRANCE OF HARMFUL AGENTS THRU THRU THE CONDUIT OPENING TO OBTAIN THE FULL BENEFIT OF THE SEALED CONSTRUCTION PROVIDED IN THIS UNIT.
- 3-SWITCH WILL PERFORM SATISFACTORILY IN TEMPERATURES TO MINUS 30° F.
- 4-BASIC SWITCHING ELEMENT LISTED BY UNDERWRITERS' LABORATORIES, INC.

**CHARACTERISTICS (TENTATIVE)**

OPERATING FORCE --- 6 LBS. APPROX.

RELEASE FORCE ---- 4 LBS. APPROX.

DIFFERENTIAL TRAVEL ---- .020 MAX.

OVERTRAVEL ---- .475 MIN.

SWITCH-BASIC REPLACEMENT DT-2R711-A7

**ELECTRICAL DATA**

CONTACT ARRANGEMENT: D. P. D. T.      BREAK DISTANCE: .020 MIN.

**⚠** 10 A-125 OR 250 VAC  
0.3 A-125 VDC; 0.15 A-250 VDC

SCALE 1/2 TO 1

DO NOT SCALE PRINT

UNLESS OTHERWISE SPECIFIED  
DIMENSIONS ARE IN INCHES  
**TOLERANCES ARE:**

ONE PLACE	(.0)	±.030
TWO PLACE	(.00)	±.015
THREE PLACE	(.000)	±.008
ANGLES		±

WEIGHT

DRAWING NUMBER: M 5 ML7  
 ISSUE: X X X X X  
 REVISIONS: CO11247, O.M.W. MAR 58, CO14233, M.B.F. DEC 59, CO38549, R.E.R. APR 77, CO55051-E, J.A.P. DEC 84, CO74287, G.J.W. APR 93  
 CHECK: S.J. JUNE 57, C.H. JUNE 57, S.J. JUNE 57, S.J. JUNE 57  
 RELEASE NO. SR-6587  
 REPLACES: 5 ML7  
 DRAWN: O.M.W. 31 MAY '57