

# MICRO SWITCH

FREEPORT ILLINOIS, U.S.A  
A DIVISION OF HONEYWELL

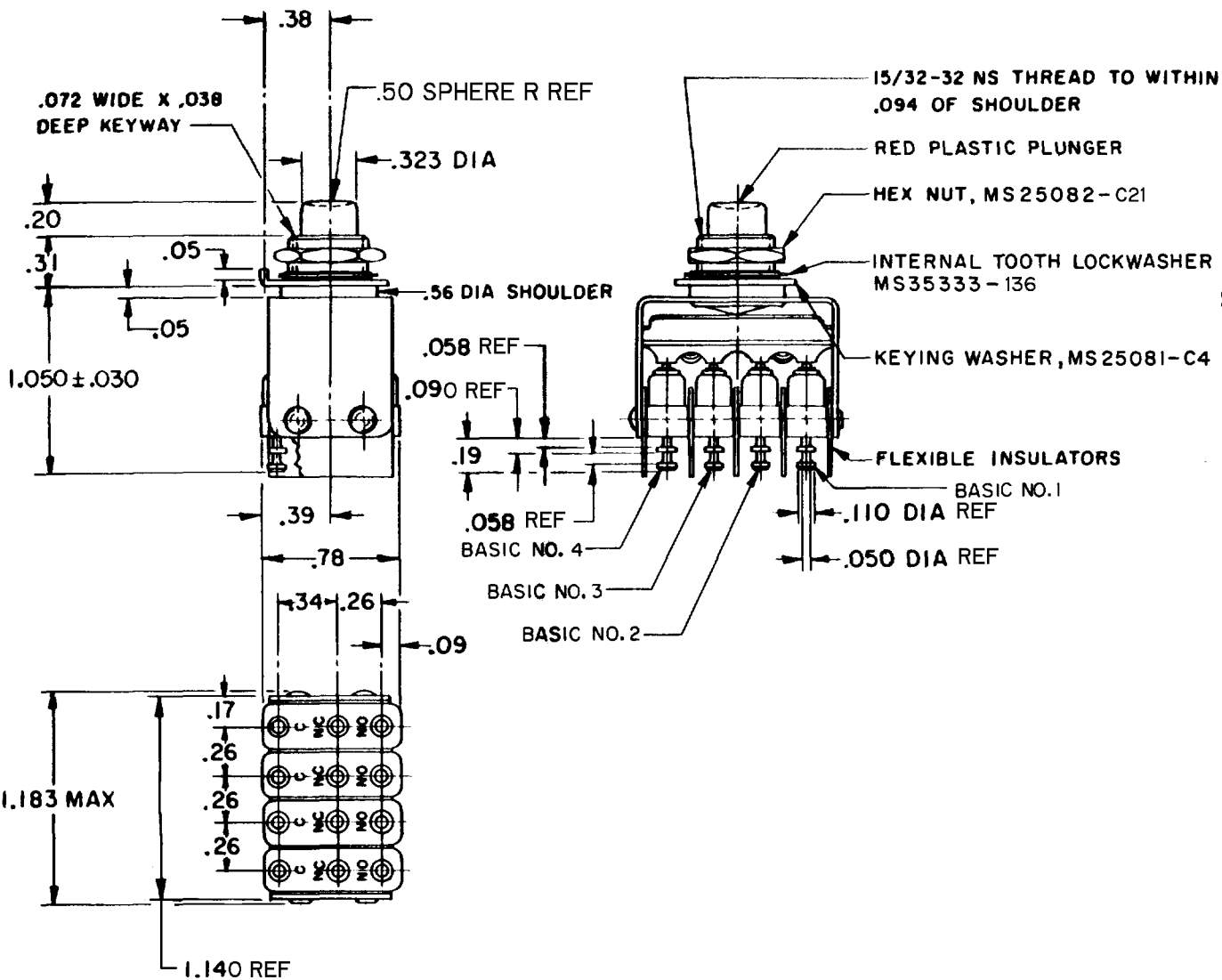
FED. MFG. CODE 91929

# ASSEMBLY- PUSHBUTTON SWITCH

CATALOG LISTING

## 4PB717-T2

MILITARY P / N  
M8805/23-004



### NOTES

- 1- UNIT INCLUDES MS25085-2 TYPE BASIC SWITCH (4)
- 2- TERMINALS ARE PLATED FOR SOLDERING
- 3- SWITCHES DO NOT NECESSARILY OPERATE SIMULTANEOUSLY

THIS DRAWING COVERS A PROPRIETARY ITEM AND IS THE PROPERTY OF MICRO SWITCH, A DIVISION OF HONEYWELL. THIS DRAWING IS NOT TO BE COPIED OR USED WITHOUT THE APPROVAL OF MICRO SWITCH.

### CHARACTERISTICS

OPERATING FORCE----- 5.5 LB MAX  
TOTAL TRAVEL ----- .100 APPROX

### ELECTRICAL DATA

	CONTACT ARRANGEMENT S P D T (4)		
	SEA LEVEL		50,000 FT.
LOAD	28 VDC	115 VAC	28 VDC
RESISTIVE	5	5	5
INDUCTIVE	3	5	2.5
LAMP	2.4	1.5	2.4

### SCALE FULL

DO NOT SCALE PRINT

UNLESS OTHERWISE NOTED  
DIMENSIONS ARE IN INCHES

### TOLERANCES ARE:

ONE PLACE (.0) ±.030  
TWO PLACE (.00) ±.015  
THREE PLACE (.000) ±.005  
ANGLES ±

WEIGHT .075 LB MAX

4PB717-T2

PAGE 1 OF 1

M

DRAWING NUMBER

8

ISSUE

REPLACES

RELEASE NO. PR785

28 OCT 98

CHECK

PR785

23 AUG 68

CHECK

23 AUG 68

CHECK

23 AUG 68

CHECK

68

AUG

19

FORMTEK

FO-50378-1A

DRAWN

OMW