

PANEL METERS

ENCLOSURES

POWER

INTERCONNECT

TEST & MEASUREMENTS

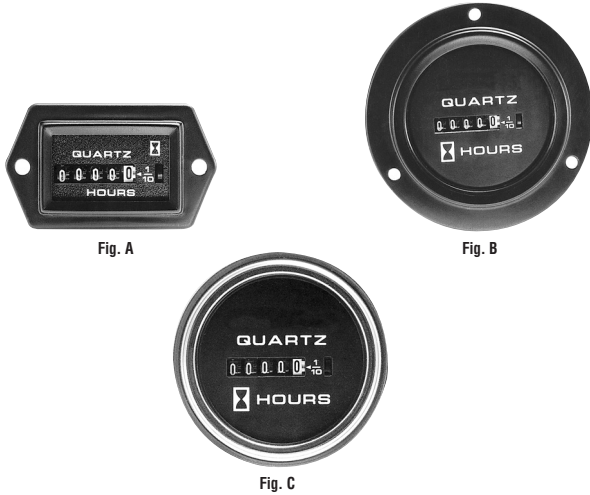
PASSIVE & ACTIVE

OPTOELECTRONICS

ASSEMBLY

INDEX

Quartz Plus Hour Meters — 85000 Series



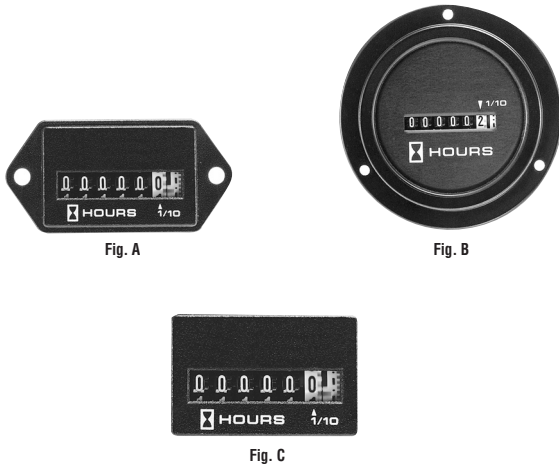
Honeywell's 85000 Series Quartz Plus meters are direct current hour meters that provide legendary performance and reliability in a technically advanced quartz package. The Quartz Plus features a rugged drive mechanism inside a shock-proof, tamper-proof, totally sealed case.

- ▶ Custom CMOS Integrated Circuit
- ▶ Totally Sealed Case
- ▶ Temperature Range: -40°F to +185°F (-40°C to +85°C)
- ▶ Shock and Vibration Resistant
- ▶ UL Recognized and CSA Certified Running Indicator
- ▶ 3 mm (0.12") Numeral Height
- ▶ Transient Voltage and Reverse Polarity Protected
- ▶ Standard Terminals: 1/4" Male Blade

Direct Current Hour Meters

Stock No.	Mfr.'s Type	Fig.	Description	Voltage Range	Electrical Termination	EACH
70111629	85000-12	A	2-Screw Mount	10.0-32 VDC	1/4" Blade	34.57
70111605	85094-12	A	2-Screw Mount	10.0-80 VDC	1/4" Blade	30.80
70111606	85331-12	A	2-Screw Mount	6.5-16 VDC	1/4" Blade	52.04
70111630	85127-12	A	2-Screw Mount, 100K Hours	10.0-80 VDC	1/4" Blade	45.79
70111607	85097-02	B	3-Screw Mount	10.0-80 VDC	1/4" Blade	30.13
70111608	85093-03	C	Round (2.27" Black Bezel)	10.0-80 VDC	1/4" Blade	47.11
70111598	85098-03	C	Round (2.50" Chrome Bezel)	10.0-80 VDC	1/4" Blade	37.53
70111609	85342-03	C	Round (2.27" Chrome Bezel)	10.0-80 VDC	1/4" Blade	33.13

AC Hour Meters — 20000 Series



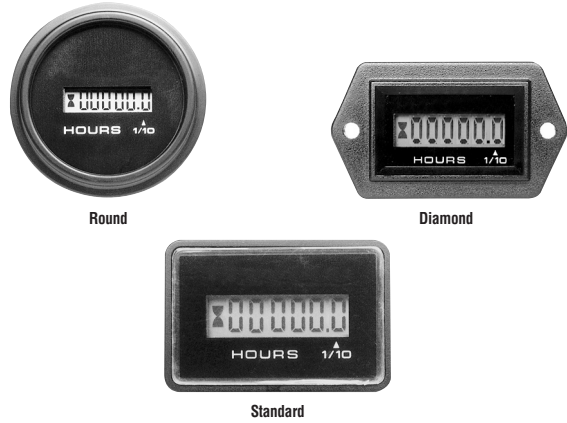
Honeywell's 20000 Series AC hour meters provide an accurate means of tracking run time on all types of equipment, whether for testing purposes, leasing applications, maintenance records or warranty programs. The synchronous motor is integrated into the chassis as one substructure for maximum reliability, and the complete unit is installed in a totally sealed case.

- ▶ Single-Phase Synchronous, Permanently-Lubricated Motor
- ▶ Temperature Range: -65°F to +154°F (-54°C to +68°C)
- ▶ Shock and Vibration Resistant
- ▶ UL Recognized, CSA Certified, CE Mark
- ▶ 3.0 Watts Power Rating
- ▶ 3 mm (0.12") Numeral Height

Stock No.	Mfr.'s Type	Fig.	Description	Voltage Range	Freq. (Hz)	Electrical Termination	EACH
70111631	20001-17	A	2-Screw Mount	108-132 VAC	60	8-32	30.20
70111610	20007-17	A	2-Screw Mount	216-264 VAC	60	8-32	27.42
70111602	20028-17	A	2-Screw Mount	108-132 VAC	50	8-32	45.70
70111519	20035-17	A	2-Screw Mount	108-132 VAC	60	Wire Lead	28.63
70111603	20017-14	B	2-Screw Mount	108-132 VAC	60	8-32	28.34
70111604	20019-14	B	3-Screw Mount	216-264 VAC	60	8-32	37.29
70111611	20116-23	C	Retainer Mount	108-132 VAC	60	8-32	25.60
70111612	20177-23	C	Retainer Mount	216-264 VAC	60	8-32	49.49
70111613	20182-23	C	Retainer Mount	108-132 VAC	60	1/4" Blade	32.71

LCD Hour Meters — LM Series

NEW



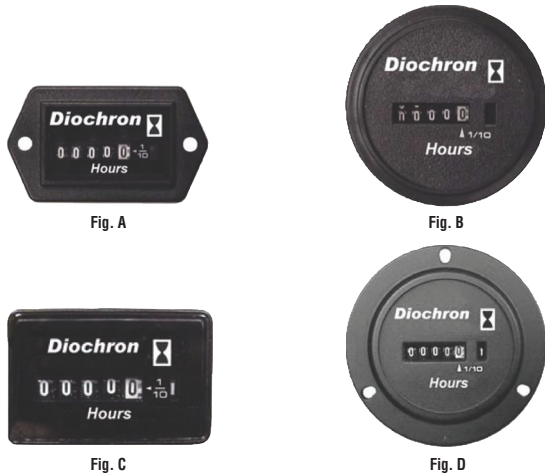
Honeywell's MCU (microcontroller unit) LCD (liquid crystal display) Hour Meters, LM Series, are sealed digital instruments designed to monitor and record elapsed running time, normally displayed in hours and tenths of hours. These devices are used to log running time of equipment used in transportation applications to assure proper maintenance of expensive machines or systems. This maintenance typically involves replacing, changing, or checking parts, belts, filters, oil, and lubrication of heavy duty equipment, or running condition of engines, motors, and blowers, to name a few. These devices feature a 40-year memory data retention (without power) to provide customers with a long data retention capability within their desired application. The large 7 mm display eases readability and offers backlight options and a running indicator. Sealing to IP67 provides enhanced durability. The hour meter also features a long reset time to offer customers the protection against malfunction of reset. The LM Series offers customization options including the customer's logo, Honeywell logo, or a black face, as well as numerous customizable port options.

All meters below have 1/4-inch blade terminals and are marked with the Honeywell logo — for 3/16-inch terminals and custom logos, please contact your local Allied sales office.

- ▶ Backlight and Large 7 mm Display Ease Readability
- ▶ Digital, Microcontroller Unit LCD
- ▶ Durable Design of Mounting Assembly
- ▶ IP67 Environmental Sealing Provides Enhanced Durability
- ▶ Customizable with Customer's Logo, as Well as Numerous Customizable Port Options
- ▶ Function Types, Including Hour Meter (Measures Time) or Counter (Measures Number of Instances, Starts, etc.)
- ▶ Fast Delivery of Samples and Products Due to Honeywell's Integrated Supply Chain and Global Design Center
- ▶ Shock and Vibration Resistance Allow for Use in a Wide Variety of Tough Applications
- ▶ UL/CE Approvals
- ▶ 9 to 64 Volt Range

Stock No.	Mfr.'s Type	Shape	Connector Definition	Bezel	EACH
70378422	LM-HB4AS-H11	Round	Positive/Negative/Reset/Enable	Black	24.43
70378423	LM-HS2AS-H11	Diamond	Positive/Negative	Black	24.00
70378424	LM-HB2AS-H31	Round	Positive/Negative	Black	24.00
70378425	LM-HH2AS-H21	Diamond	Positive/Negative	Black	26.68
70378426	LM-HH4AS-H21	Diamond	Positive/Negative/Reset/Enable	Black	27.14
70378427	LM-HS4AS-H11	Standard	Positive/Negative/Reset/Enable	—	24.43
70378428	LM-HB4AS-H31	Round	Positive/Negative/Reset/Enable	Black	24.43

Diochron Hour Meters



- ▶ Quartz Accuracy: ±0.02% (±200 ppm)
- ▶ Sealed, Shock-Resistant Case
- ▶ Run Indicator
- ▶ Voltage Range: 10-80 VDC
- ▶ Temperature Range: -40°F to +185°F
- ▶ Numeral Size: 0.12"
- ▶ UL Recognized
- ▶ CSA Certified
- ▶ Polycarbonate Case and Lens
- ▶ 1/4" Blade Terminals

Stock No.	Mfr.'s Type	Fig.	Description	Voltage Range	EACH
70111535	82450-84	A	2-Screw Retainer, Round Black Bezel	10-80 VDC	27.32
70111536	82451-84	B	Retainer, Round Black Bezel	10-80 VDC	28.91
70111537	82452-82	C	Retainer, Rectangular Bezel	10-80 VDC	25.19
70111538	82453-85	D	3-Screw	10-80 VDC	25.19